

1

HYDRAULICS

- Description:**
- These safe high pressure fittings are used in all fields of hydraulics.
  - A wide range of different designs allows use in a variety of applications.
- Material:**
- Steel and stainless steel.
- Product range:**
- Series L 6 to 42 mm tube outside diameter.
  - Series S 6 to 38 mm tube outside diameter.
- Nominal pressure PN:**
- Series L up to 500 bar (7252 psi).
  - Series S up to 800 bar (11603 psi).
- Advantages:**
- Highest corrosion resistance to white rust increased to more than 500 hours on average.
  - Thanks to the higher pressure levels, less expensive «L» series fittings can now be used instead of the heavier «S» series.
  - Special treatment of the larger sized nuts by the EO-LUB procedure (25S/28L and larger), the tightening torques of EO fittings have been reduced by 25%.
  - Cr(VI)-free treated surface meets requirements of the automotive industry and the requirements issued by the European Parliament.
- Benefits:**
- Longer service life.
  - EO fittings can be used in applications of up to 800 bar (S series) and 500 bar (L series) which considerably exceeds the DIN/ISO requirements.
  - L series is of benefit in limited or tight space applications.
  - EO-LUB makes assembly easier and prevents underassembly, the most common reason for tube fittings failure.
  - Cr(VI)-free surfaces make the fittings environmentally clean and safe to use.
  - Worldwide availability.

**G - Union**



63 Parker PowerLok

Part number		Tube Outside Diameter
Steel	Stainless Steel	mm
G06LCFX	G06L71X	6
G08LCFX	G08L71X	8
G10LCFX	G10L71X	10
G12LCFX	G12L71X	12
G15LCFX	G15L71X	15
G18LCFX	G18L71X	18
G22LCFX	G22L71X	22
G28LCFX	G28L71X	28
G35LCFX	G35L71X	35
G42LCFX	G42L71X	42
G06SCFX	G06S71X	6
G08SCFX	G08S71X	8
G10SCFX	G10S71X	10
G12SCFX	G12S71X	12
G14SCFX	G14S71X	14
G16SCFX	G16S71X	16
G20SCFX	G20S71X	20
G25SCFX	G25S71X	25
G30SCFX	G30S71X	30
G38SCFX	G38S71X	38



T - Union tee

1



63 Parker Direct Link

Part number		Tube Outside Diameter
Steel	Stainless Steel	mm
T06LCFX	T06L71X	6
T08LCFX	T08L71X	8
T10LCFX	T10L71X	10
T12LCFX	T12L71X	12
T15LCFX	T15L71X	15
T18LCFX	T18L71X	18
T22LCFX	T22L71X	22
T28LCFX	T28L71X	28
T35LCFX	T35L71X	35
T42LCFX	T42L71X	42
T06SCFX	T06S71X	6
T08SCFX	T08S71X	8
T10SCFX	T10S71X	10
T12SCFX	T12S71X	12
T16SCFX	T16S71X	16
T20SCFX	T20S71X	20
T25SCFX	T25S71X	25
T30SCFX	T30S71X	30
T38SCFX	T38S71X	38

HYDRAULICS

# 1 W - Union elbow



63 Parker Direct Link

Part number		Tube Outside Diameter
Steel	Stainless Steel	mm
W06LCFX	W06L71X	6
W08LCFX	W08L71X	8
W10LCFX	W10L71X	10
W12LCFX	W12L71X	12
W15LCFX	W15L71X	15
W18LCFX	W18L71X	18
W22LCFX	W22L71X	22
W28LCFX	W28L71X	28
W35LCFX	W35L71X	35
W42LCFX	W42L71X	42
W06SCFX	W06S71X	6
W10SCFX	W10S71X	10
W12SCFX	W12S71X	12
W14SCFX	-	14
W16SCFX	W16S71X	16
W20SCFX	W20S71X	20
W25SCFX	W25S71X	25
W30SCFX	W30S71X	30
W38SCFX	W38S71X	38

# K - Union cross



63 Parker Direct Link

Part number		Tube Outside Diameter
Steel		mm
K06LCFX		6
K08LCFX		8
K10LCFX		10
K12LCFX		12
K15LCFX		15
K18LCFX		18
K22LCFX		22
K28LCFX		28
K35LCFX		35
K42LCFX		42
K06SCFX		6
K10SCFX		10
K12SCFX		12
K14SCFX		14
K16SCFX		16
K20SCFX		20
K25SCFX		25

HYDRAULICS



GR - Straight reducer

1



63 Parker PowerLine

Part number	Outside Diameter	
	Tube 1	Tube 2
Steel	mm	mm
GR08/06LCFX	8	6
GR10/06LCFX	10	6
GR10/08LCFX	10	8
GR12/06LCFX	12	6
GR12/08LCFX	12	8
GR12/10LCFX	12	10
GR15/10LCFX	15	10
GR15/12LCFX	15	12
GR18/10LCFX	18	10
GR18/12LCFX	18	12
GR18/15LCFX	18	15
GR22/12LCFX	22	12
GR22/15LCFX	22	15
GR22/18LCFX	22	18
GR28/18LCFX	28	18
GR28/22LCFX	28	22
GR35/22LCFX	35	22
GR35/28LCFX	35	28
GR42/35LCFX	42	35
GR08/06SCFX	8	6
GR10/06SCFX	10	6
GR10/08SCFX	10	8
GR12/06SCFX	12	6
GR12/08SCFX	12	8
GR12/10SCFX	12	10
GR14/10SCFX	14	10
GR14/12SCFX	14	12
GR16/10SCFX	16	10
GR16/12SCFX	16	12
GR16/14SCFX	16	14
GR20/10SCFX	20	10
GR20/12SCFX	20	12
GR20/16SCFX	20	16
GR25/16SCFX	25	16
GR25/20SCFX	25	20
GR30/20SCFX	30	20
GR30/25SCFX	30	25
GR38/30SCFX	38	30

HYDRAULICS



1 TR - Tee reducer



63 Parker PowerLink

Part number	Outside Diameter		
	Tube 1	Tube 2	Tube 3
Steel	mm	mm	mm
TR06/08/06LCFX	6	8	6
TR08/06/08LCFX	8	6	8
TR08/10/08LCFX	8	10	8
TR10/06/10LCFX	10	6	10
TR10/08/10LCFX	10	8	10
TR08/12/08LCFX	8	12	8
TR12/06/12LCFX	12	6	12
TR12/08/08LCFX	12	8	8
TR12/08/12LCFX	12	8	12
TR12/10/10LCFX	12	10	10
TR12/10/12LCFX	12	10	12
TR10/15/10LCFX	10	15	10
TR12/15/12LCFX	12	15	12
TR15/06/15LCFX	15	6	15
TR15/10/15LCFX	15	10	15
TR15/12/12LCFX	15	12	12
TR15/12/15LCFX	15	12	15
TR15/15/12LCFX	15	15	12
TR12/18/12LCFX	12	18	12
TR18/10/10LCFX	18	10	10
TR18/10/18LCFX	18	10	18
TR18/12/18LCFX	18	12	18
TR18/15/18LCFX	18	15	18
TR22/10/22LCFX	22	10	22
TR22/12/22LCFX	22	12	22
TR22/15/15LCFX	22	15	15
TR22/15/22LCFX	22	15	22
TR22/18/18LCFX	22	18	18
TR22/18/22LCFX	22	18	22
TR28/12/28LCFX	28	12	28
TR28/15/28LCFX	28	15	28
TR28/18/28LCFX	28	18	28
TR28/22/22LCFX	28	22	22
TR28/22/28LCFX	28	22	28
TR12/08/08SCFX	12	8	8
TR12/10/12SCFX	12	10	12
TR12/16/12SCFX	12	16	12
TR16/08/16SCFX	16	8	16
TR16/10/16SCFX	16	10	16
TR16/12/16SCFX	16	12	16
TR16/20/16SCFX	16	20	16
TR20/10/20SCFX	20	10	20
TR20/12/20SCFX	20	12	20
TR20/16/20SCFX	20	16	20
TR20/25/20SCFX	20	25	20
TR25/16/25SCFX	25	16	25
TR25/20/25SCFX	25	20	25
TR25/30/25SCFX	25	30	25

HYDRAULICS

**SV - Bulkhead union**



63 Parker Direct Link

Part number		Tube Outside Diameter
Steel	Stainless Steel	mm
SV06LOMDCF	SV06LOMD71	6
SV08LOMDCF	SV08LOMD71	8
SV10LOMDCF	SV10LOMD71	10
SV12LOMDCF	SV12LOMD71	12
SV15LOMDCF	SV15LOMD71	15
SV18LOMDCF	SV18LOMD71	18
SV22LOMDCF	SV22LOMD71	22
SV28LOMDCF	SV28LOMD71	28
SV35LOMDCF	SV35LOMD71	35
SV42LOMDCF	SV42LOMD71	42
SV06SOMDCF	-	6
SV08SOMDCF	-	8
SV10SOMDCF	SV10SOMD71	10
SV12SOMDCF	SV12SOMD71	12
SV14SOMDCF	-	14
SV16SOMDCF	SV16SOMD71	16
SV20SOMDCF	SV20SOMD71	20
SV25SOMDCF	SV25SOMD71	25
SV30SOMDCF	SV30SOMD71	30
SV38SOMDCF	-	38

**WSV - Bulkhead elbow**



63 Parker Direct Link

Part number		Tube Outside Diameter
Steel	Stainless Steel	mm
WSV06LOMDCF	WSV06LOMD71	6
WSV08LOMDCF	WSV08LOMD71	8
WSV10LOMDCF	WSV10LOMD71	10
WSV12LOMDCF	WSV12LOMD71	12
WSV15LOMDCF	WSV15LOMD71	15
WSV18LOMDCF	WSV18LOMD71	18
WSV22LOMDCF	-	22
WSV28LOMDCF	WSV28LOMD71	28
WSV35LOMDCF	-	35
WSV42LOMDCF	-	42
WSV06SOMDCF	-	6
WSV08SOMDCF	-	8
WSV10SOMDCF	-	10
WSV12SOMDCF	-	12
WSV16SOMDCF	-	16
WSV20SOMDCF	-	20
WSV25SOMDCF	-	25
WSV30SOMDCF	-	30
WSV38SOMDCF	-	38

**1** EW - Swivel nut elbow



63 Parker Direct Link

Part number		Tube Outside Diameter
Steel	Stainless Steel	mm
EW06LOMDCF	EW06LOMD71	6
EW08LOMDCF	EW08LOMD71	8
EW10LOMDCF	EW10LOMD71	10
EW12LOMDCF	EW12LOMD71	12
EW15LOMDCF	EW15LOMD71	15
EW18LOMDCF	EW18LOMD71	18
EW22LOMDCF	EW22LOMD71	22
EW28LOMDCF	EW28LOMD71	28
EW35LOMDCF	EW35LOMD71	35
EW42LOMDCF	EW42LOMD71	42
EW06SOMDCF	EW06SOMD71	6
EW08SOMDCF	EW08SOMD71	8
EW10SOMDCF	EW10SOMD71	10
EW12SOMDCF	EW12SOMD71	12
EW14SOMDCF	-	14
EW16SOMDCF	EW16SOMD71	16
EW20SOMDCF	EW20SOMD71	20
EW25SOMDCF	EW25SOMD71	25
EW30SOMDCF	EW30SOMD71	30
EW38SOMDCF	EW38SOMD71	38

**EV - Swivel nut 45° elbow**



63 Parker Direct Link

Part number		Tube Outside Diameter
Steel	Stainless Steel	mm
EV06LOMDCF	-	6
EV08LOMDCF	EV08LOMD71	8
EV10LOMDCF	EV10LOMD71	10
EV12LOMDCF	EV12LOMD71	12
EV15LOMDCF	-	15
EV18LOMDCF	EV18LOMD71	18
EV22LOMDCF	EV22LOMD71	22
EV28LOMDCF	EV28LOMD71	28
EV35LOMDCF	-	35
EV42LOMDCF	-	42
EV06SOMDCF	-	6
EV08SOMDCF	-	8
EV10SOMDCF	-	10
EV12SOMDCF	-	12
EV16SOMDCF	-	16
EV20SOMDCF	EV20SOMD71	20
EV25SOMDCF	-	25
EV30SOMDCF	EV30SOMD71	30
EV38SOMDCF	-	38

HYDRAULICS

**ET - Swivel nut branch tee**



63 Parker Direct Link

Part number		Tube Outside Diameter
Steel	Stainless Steel	mm
ET06LOMDCF	-	6
ET08LOMDCF	ET08LOMD71	8
ET10LOMDCF	ET10LOMD71	10
ET12LOMDCF	ET12LOMD71	12
ET15LOMDCF	ET15LOMD71	15
ET18LOMDCF	ET18LOMD71	18
ET22LOMDCF	ET22LOMD71	22
ET28LOMDCF	ET28LOMD71	28
ET35LOMDCF	-	35
ET42LOMDCF	-	42
ET06SOMDCF	-	6
ET08SOMDCF	-	8
ET10SOMDCF	-	10
ET12SOMDCF	ET12SOMD71	12
ET14SOMDCF	-	14
ET16SOMDCF	ET16SOMD71	16
ET20SOMDCF	ET20SOMD71	20
ET25SOMDCF	ET25SOMD71	25
ET30SOMDCF	ET30SOMD71	30
ET38SOMDCF	ET38SOMD71	38

**EL - Swivel nut run tee**



63 Parker Direct Link

Part number		Tube Outside Diameter
Steel	Stainless Steel	mm
EL06LOMDCF	-	6
EL08LOMDCF	EL08LOMD71	8
EL10LOMDCF	EL10LOMD71	10
EL12LOMDCF	EL12LOMD71	12
EL15LOMDCF	EL15LOMD71	15
EL18LOMDCF	EL18LOMD71	18
EL22LOMDCF	EL22LOMD71	22
EL28LOMDCF	EL28LOMD71	28
EL35LOMDCF	EL35LOMD71	35
EL42LOMDCF	EL42LOMD71	42
EL06SOMDCF	EL06SOMD71	6
EL08SOMDCF	-	8
EL10SOMDCF	-	10
EL12SOMDCF	EL12SOMD71	12
EL14SOMDCF	-	14
EL16SOMDCF	EL16SOMD71	16
EL20SOMDCF	EL20SOMD71	20
EL25SOMDCF	EL25SOMD71	25
EL30SOMDCF	EL30SOMD71	30
EL38SOMDCF	EL38SOMD71	38



**1** GZ - Swivel union



63 Parker DirectLink

Part number	Tube Outside Diameter
Steel	mm
GZ06LCF	6
GZ08LCF	8
GZ10LCF	10
GZ12LCF	12
GZ15LCF	15
GZ18LCF	18
GZ22LCF	22
GZ28LCF	28
GZ35LCF	35
GZ42LCF	42
GZ06SCF	6
GZ08SCF	8
GZ10SCF	10
GZ12SCF	12
GZ14SCF	14
GZ16SCF	16
GZ20SCF	20
GZ25SCF	25
GZ30SCF	30
GZ38SCF	38

HYDRAULICS

**DA - Distance piece adapter**



63 Parker DirectLink

Part number	Tube Outside Diameter
Steel	mm
DA06LOMDCF	6
DA08LOMDCF	8
DA10LOMDCF	10
DA12LOMDCF	12
DA15LOMDCF	15
DA18LOMDCF	18
DA22LOMDCF	22
DA28LOMDCF	28
DA35LOMDCF	35
DA42LOMDCF	42
DA06SOMDCF	6
DA08SOMDCF	8
DA10SOMDCF	10
DA12SOMDCF	12
DA16SOMDCF	16
DA20SOMDCF	20
DA25SOMDCF	25
DA30SOMDCF	30
DA38SOMDCF	38

**GZR - Swivel reducer**



63 Parker Direct Line

Part number	Outside Diameter	
	Tube 1	Tube 2
Steel	mm	mm
GZR06L/06SCF	6	6
GZR08/06LCF	8	6
GZR08L/08SCF	8	8
GZR10/06LCF	10	6
GZR10/08LCF	10	8
GZR10L/10SCF	10	10
GZR12/06LCF	12	6
GZR12/08LCF	12	8
GZR12/10LCF	12	10
GZR12L/12SCF	12	12
GZR15/08LCF	15	8
GZR15/10LCF	15	10
GZR15/12LCF	15	12
GZR18/10LCF	18	10
GZR18/12LCF	18	12
GZR18/15LCF	18	15
GZR18L/16SCF	18	16
GZR22/12LCF	22	12
GZR22/15LCF	22	15
GZR22/18LCF	22	18
GZR22L/20SCF	22	20
GZR28/15LCF	28	15
GZR28/18LCF	28	18
GZR28/22LCF	28	22
GZR28L/25SCF	28	25
GZR35/18LCF	35	18
GZR35/22LCF	35	22
GZR35/28LCF	35	28
GZR35L/30SCF	35	30
GZR42/22LCF	42	22
GZR42/28LCF	42	28
GZR42/35LCF	42	35
GZR42L/38SCF	42	38
GZR08/06SCF	8	6
GZR10/06SCF	10	6
GZR10/08SCF	10	8
GZR12/06SCF	12	6
GZR12/08SCF	12	8
GZR12/10SCF	12	10
GZR16/10SCF	16	10
GZR16/12SCF	16	12
GZR16S/15LCF	16	15
GZR20/12SCF	20	12
GZR20/16SCF	20	16
GZR20S/18LCF	20	18
GZR25/16SCF	25	16
GZR25/20SCF	25	20
GZR25S/22LCF	25	22
GZR30/16SCF	30	16
GZR30/20SCF	30	20
GZR30/25SCF	30	25
GZR30S/28LCF	30	28
GZR38/20SCF	38	20
GZR38/25SCF	38	25
GZR38/30SCF	38	30
GZR38S/35LCF	38	35

**1** GE-R-ED - Male stud connector - BSPP



63 Parker PowerLok

HYDRAULICS

Part number		Tube Outside Diameter	Thread
Steel	Stainless Steel	mm	BSPP
GE06LREDOMDCF	GE06LREDOMD71	6	1/8A
GE06LR1/4EDOMDCF	GE06LR1/4EDOMD71	6	1/4A
GE06LR3/8EDOMDCF	-	6	3/8A
GE06LR1/2EDOMDCF	-	6	1/2A
GE08LREDOMDCF	GE08LREDOMD71	8	1/4A
GE08LR1/8EDOMDCF	GE08LR1/8EDOMD71	8	1/8A
GE08LR3/8EDOMDCF	-	8	3/8A
GE08LR1/2EDOMDCF	GE08LR1/2EDOMD71	8	1/2A
GE10LREDOMDCF	GE10LREDOMD71	10	1/4A
GE10LR1/8EDOMDCF	GE10LR1/8EDOMD71	10	1/8A
GE10LR3/8EDOMDCF	GE10LR3/8EDOMD71	10	3/8A
GE10LR1/2EDOMDCF	GE10LR1/2EDOMD71	10	1/2A
GE12LREDOMDCF	GE12LREDOMD71	12	3/8A
GE12LR1/4EDOMDCF	GE12LR1/4EDOMD71	12	1/4A
GE12LR1/2EDOMDCF	GE12LR1/2EDOMD71	12	1/2A
GE12LR3/4EDOMDCF	-	12	3/4A
GE15LREDOMDCF	GE15LREDOMD71	15	1/2A
GE15LR3/8EDOMDCF	GE15LR3/8EDOMD71	15	3/8A
GE15LR3/4EDOMDCF	-	15	3/4A
GE18LREDOMDCF	GE18LREDOMD71	18	1/2A
GE18LR3/8EDOMDCF	GE18LR3/8EDOMD71	18	3/8A
GE18LR3/4EDOMDCF	GE18LR3/4EDOMD71	18	3/4A
GE22LREDOMDCF	GE22LREDOMD71	22	3/4A
GE22LR1/2EDOMDCF	GE22LR1/2EDOMD71	22	1/2A
GE22LR1EDOMDCF	GE22LR1EDOMD71	22	1A
GE28LREDOMDCF	GE28LRED71	28	1A
GE28LR3/4EDOMDCF	GE28LR3/4EDOMD71	28	3/4A
GE28LR11/4EDOMDCF	GE28LR11/4EDOMD71	28	11/4A
GE35LREDOMDCF	GE35LREDOMD71	35	11/4A
GE35LR1EDOMDCF	-	35	1A
GE35LR11/2EDOMDCF	-	35	11/2A
GE42LREDOMDCF	GE42LREDOMD71	42	1 1/2A
GE42LR1EDOMDCF	-	42	1A
GE42LR11/4EDOMDCF	-	42	1 1/4A
GE06SREDOMDCF	-	6	1/4A



**GE-R-ED - Male stud connector - BSPP (cont'd)**



63 Parker PowerLine

Part number		Tube Outside Diameter	Thread
Steel	Stainless Steel	mm	BSPP
GE06SR1/8EDOMDCF	-	6	1/8A
GE06SR3/8EDOMDCF	-	6	3/8A
GE06SR1/2EDOMDCF	-	6	1/2A
GE08SREDOMDCF	GE08SREDOMD71	8	1/4A
GE08SR3/8EDOMDCF	-	8	3/8A
GE08SR1/2EDOMDCF	-	8	1/2A
GE10SREDOMDCF	GE10SREDOMD71	10	3/8A
GE10SR1/4EDOMDCF	GE10SR1/4EDOMD71	10	1/4A
GE10SR1/2EDOMDCF	GE10SR1/2EDOMD71	10	1/2A
GE12SREDOMDCF	GE12SREDOMD71	12	3/8A
GE12SR1/4EDOMDCF	GE12SR1/4EDOMD71	12	1/4A
GE12SR1/2EDOMDCF	GE12SR1/2EDOMD71	12	1/2A
GE14SREDOMDCF	GE14SREDOMD71	14	1/2A
GE14SR3/8EDOMDCF	-	14	3/8A
GE14SR3/4EDOMDCF	-	14	3/4A
GE16SREDOMDCF	GE16SREDOMD71	16	1/2A
GE16SR3/8EDOMDCF	GE16SR3/8EDOMD71	16	3/8A
GE16SR3/4EDOMDCF	GE16SR3/4EDOMD71	16	3/4A
GE20SREDOMDCF	GE20SREDOMD71	20	3/4
GE20SR1/2EDOMDCF	GE20SR1/2EDOMD71	20	1/2A
GE20SR1EDOMDCF	GE20SR1EDOMD71	20	1A
GE20SR11/4EDOMDCF	-	20	1 1/4A
GE25SREDOMDCF	GE25SREDOMD71	25	1A
GE25SR1/2EDOMDCF	GE25SR1/2EDOMD71	25	1/2A
GE25SR3/4EDOMDCF	GE25SR3/4EDOMD71	25	3/4A
GE25SR11/4EDOMDCF	-	25	1 1/4A
GE25SR11/2EDOMDCF	-	25	1 1/2A
GE30SREDOMDCF	GE30SREDOMD71	30	1 1/4A
GE30SR1EDOMDCF	-	30	1A
GE30SR11/2EDOMDCF	-	30	1 1/2A
GE38SREDOMDCF	GE38SREDOMD71	38	1 1/2A
GE38SR11/4EDOMDCF	GE38SR11/4EDOMD71	38	1 1/4A

**1** EGE-R-ED - Swivel connector - BSPP



63 Parker  
ParkerLok

Part number		Tube Outside Diameter	Thread
Steel	Stainless Steel	mm	BSPP
EGE06LREDCF	EGE06LRED71	6	1/8A
EGE08LREDCF	EGE08LRED71	8	1/4A
EGE10LREDCF	EGE10LRED71	10	1/4A
EGE10LR3/8EDCF	-	10	3/8A
EGE12LREDCF	EGE12LRED71	12	3/8A
EGE12LR1/4EDCF	EGE12LR1/4ED71	12	1/4A
EGE12LR1/2EDCF	EGE12LR1/2ED71	12	1/2A
EGE15LREDCF	EGE15LRED71	15	1/2A
EGE18LREDCF	EGE18LRED71	18	1/2A
EGE18LR3/4EDCF	-	18	3/4A
EGE22LREDCF	EGE22LRED71	22	3/4A
EGE28LREDCF	EGE28LRED71	28	1A
EGE35LREDCF	EGE35LRED71	35	1 1/4A
EGE42LREDCF	EGE42LRED71	42	1 1/2A
EGE06SREDCF	EGE06SRED71	6	1/4A
EGE08SREDCF	EGE08SRED71	8	1/4A
EGE10SREDCF	EGE10SRED71	10	3/8A
EGE12SREDCF	EGE12SRED71	12	3/8A
EGE12SR1/4EDCF	-	12	1/4A
EGE12SR1/2EDCF	EGE12SR1/2ED71	12	1/2A
EGE14SREDCF	-	14	1/2A
EGE16SREDCF	EGE16SRED71	16	1/2A
EGE20SREDCF	EGE20SRED71	20	3/4A
EGE25SREDCF	EGE25SRED71	25	1A
EGE30SREDCF	EGE30SRED71	30	1 1/4A
EGE38SREDCF	EGE38SRED71	38	1 1/2A

HYDRAULICS



**EVGE-R-ED - Standpipe connector - BSPP**

1



63  
Power  
One-Link

Part number		Tube Outside Diameter	Thread
Steel	Stainless Steel	mm	BSPP
EVGE06LREDCF	-	6	1/8A
EVGE08LREDCF	EVGE08LRED71	8	1/4A
EVGE10LREDCF	EVGE10LRED71	10	1/4A
EVGE12LREDCF	EVGE12LRED71	12	3/8A
EVGE12LR1/4EDCF	-	12	1/4A
EVGE12LR1/2EDCF	-	12	1/2A
EVGE15LREDCF	EVGE15LRED71	15	1/2A
EVGE18LREDCF	EVGE18LRED71	18	1/2A
EVGE22LREDCF	-	22	3/4A
EVGE28LREDCF	EVGE28LRED71	28	1A
EVGE35LREDCF	-	35	1 1/4A
EVGE42LREDCF	EVGE42LRED71	42	1 1/2A
EVGE06SREDCF	-	6	1/4A
EVGE08SREDCF	-	8	1/4A
EVGE12SREDCF	-	12	3/8A
EVGE12SR1/2EDCF	-	12	1/2A
EVGE14SREDCF	-	14	1/2A
EVGE16SREDCF	-	16	1/2A
EVGE16SR3/4EDCF	-	16	3/4A
EVGE20SREDCF	-	20	3/4A
EVGE25SREDCF	-	25	1A
EVGE30SREDCF	-	30	1 1/4A
EVGE38SREDCF	-	38	1 1/2A

HYDRAULICS

**1 WEE-R - Adjustable locknut elbow - BSPP - O-Ring**

HYDRAULICS



63 Parker Direct Link

Part number	Tube Outside Diameter	Thread
Steel	mm	BSPP
WEE06LROMDCF	6	1/8A
WEE08LROMDCF	8	1/4A
WEE10LROMDCF	10	1/4A
WEE12LROMDCF	12	3/8A
WEE15LROMDCF	15	1/2A
WEE18LROMDCF	18	1/2A
WEE22LROMDCF	22	3/4A
WEE28LROMDCF	28	1A
WEE35LROMDCF	35	1 1/4A
WEE42LROMDCF	42	1 1/2A
WEE06SRMDCF	6	1/4A
WEE08SRMDCF	8	1/4A
WEE10SRMDCF	10	3/8A
WEE12SRMDCF	12	3/8A
WEE16SRMDCF	16	1/2A
WEE20SRMDCF	20	3/4A
WEE25SRMDCF	25	1A
WEE30SRMDCF	30	1 1/4A
WEE38SRMDCF	38	1 1/2A

**SWVE-R - Banjo elbow - Male BSPP**



63 Parker Power Link

Part number	Tube Outside Diameter	Thread
Steel	mm	BSPP
SWVE06LROMDCF	6	1/8A
SWVE08LROMDCF	8	1/4A
SWVE10LROMDCF	10	1/4A
SWVE12LROMDCF	12	3/8A
SWVE15LROMDCF	15	1/2A
SWVE18LROMDCF	18	1/2A
SWVE22LROMDCF	22	3/4A
SWVE08SRMDCF	8	1/4A
SWVE10SRMDCF	10	3/8A
SWVE12SRMDCF	12	3/8A
SWVE14SRMDCF	14	1/2A
SWVE16SRMDCF	16	1/2A
SWVE20SRMDCF	20	3/4A
SWVE25SRMDCF	25	1A
SWVE30SRMDCF	30	1 1/4A

**DSVW-R - Low pressure banjo elbow - Male BSPP**

1



63 Parker Direct Link

Part number	Tube Outside Diameter	Thread
Steel	mm	BSPP
DSVW06LR0MDCF	6	1/8A
DSVW08LR0MDCF	8	1/4A
DSVW10LR0MDCF	10	1/4A
DSVW12LR0MDCF	12	3/8A
DSVW15LR0MDCF	15	1/2A
DSVW18LR0MDCF	18	1/2A
DSVW22LR0MDCF	22	3/4A
DSVW28LR0MDCF	28	1A
DSVW12SR0MDCF	12	3/8A
DSVW16SR0MDCF	16	1/2A
DSVW20SR0MDCF	20	3/4A
DSVW25SR0MDCF	25	1A
DSVW30SR0MDCF	30	1 1/4A

HYDRAULICS



**1 WH-R - High pressure banjo elbow - Male BSPP with metal sealing ring**

HYDRAULICS



63 Parker  
PowerLink

Part number	Tube Outside Diameter	Thread
Steel	mm	BSPP
WH06LROMDCF	6	1/8A
WH08LROMDCF	8	1/4A
WH10LROMDCF	10	1/4A
WH12LROMDCF	12	3/8A
WH15LROMDCF	15	1/2A
WH18LROMDCF	18	1/2A
WH22LROMDCF	22	3/4A
WH28LROMDCF	28	1A
WH35LROMDCF	35	1 1/4A
WH42LROMDCF	42	1 1/2A
WH06SRMDCF	6	1/4A
WH08SRMDCF	8	1/4A
WH10SRMDCF	10	3/8A
WH12SRMDCF	12	3/8A
WH16SRMDCF	16	1/2A
WH20SRMDCF	20	3/4A
WH25SRMDCF	25	1A

**WH-R-KDS - High pressure banjo elbow - Male BSPP with soft seal ring**



63 Parker  
DirectLink

Part number	Tube Outside Diameter	Thread
Steel	mm	BSPP
WH06LRKDSOMDCF	6	1/8A
WH08LRKDSOMDCF	8	1/4A
WH10LRKDSOMDCF	10	1/4A
WH12LRKDSOMDCF	12	3/8A
WH15LRKDSOMDCF	15	1/2A
WH18LRKDSOMDCF	18	1/2A
WH22LRKDSOMDCF	22	3/4A
WH28LRKDSOMDCF	28	1A
WH06SRKDSOMDCF	6	1/4A
WH08SRKDSOMDCF	8	1/4A
WH10SRKDSOMDCF	10	3/8A
WH12SRKDSOMDCF	12	3/8A
WH14SRKDSOMDCF	14	1/2A
WH16SRKDSOMDCF	16	1/2A
WH20SRKDSOMDCF	20	3/4A
WH25SRKDSOMDCF	25	1A
WH30SRKDSOMDCF	30	1 1/4A
WH38SRKDSOMDCF	38	1 1/2A

**TH-R - High pressure banjo tee - Male BSPP with metal seal ring**

1



63 Parker Direct Link

Part number	Tube Outside Diameter	Thread
Steel	mm	BSP
TH06LROMDCF	6	1/8A
TH08LROMDCF	8	1/4A
TH10LROMDCF	10	1/4A
TH12LROMDCF	12	3/8A
TH18LROMDCF	18	1/2A
TH22LROMDCF	22	3/4A
TH35LROMDCF	35	1 1/4A
TH06SRMDCF	6	1/4A
TH08SRMDCF	8	1/4A
TH12SRMDCF	12	3/8A
TH16SRMDCF	16	1/2A

HYDRAULICS

**TH-R-KDS - High pressure banjo tee - Male BSPP with soft seal ring**



63 Parker Direct Link

Part number	Tube Outside Diameter	Thread
Steel	mm	BSP
TH06LRKDSOMDCF	6	1/8A
TH08LRKDSOMDCF	8	1/4A
TH10LRKDSOMDCF	10	1/4A
TH12LRKDSOMDCF	12	3/8A
TH15LRKDSOMDCF	15	1/2A
TH18LRKDSOMDCF	18	1/2A
TH28LRKDSOMDCF	28	1A
TH06SRKDSOMDCF	6	1/4A
TH08SRKDSOMDCF	8	1/4A
TH10SRKDSOMDCF	10	3/8A
TH12SRKDSOMDCF	12	3/8A
TH16SRKDSOMDCF	16	1/2A
TH20SRKDSOMDCF	20	3/4A
TH25SRKDSOMDCF	25	1A
TH30SRKDSOMDCF	30	1 1/4A

# 1 GE-R-KEG - Male stud connector - Male BSPT short - BSP taper thread

HYDRAULICS



63 Parker Direct Link

Part number	Tube Outside Diameter	Thread
Steel	mm	BSPT
GE06LR1/8KEGCFX	6	1/8
GE06LR1/4KEGCFX	6	1/4
GE08LR1/4KEGCFX	8	1/4
GE10LR1/4KEGCFX	10	1/4
GE12LR1/4KEGCFX	12	1/4
GE12LR3/8KEGCFX	12	3/8
GE12LR1/2KEGCFX	12	1/2
GE15LR3/8KEGCFX	15	3/8
GE15LR1/2KEGCFX	15	1/2
GE18LR1/2KEGCFX	18	1/2
GE22LR3/4KEGCFX	22	3/4
GE28LR1KEGCFX	28	1
GE35LR11/4KEGCFX	35	1 1/4
GE42LR11/2KEGCFX	42	1 1/2

# WE-R - Male stud elbow - BSPP metal sealing edge



63 Parker Direct Link

Part number	Tube Outside Diameter	Thread
Steel	mm	BSPP
WE06LRCFX	6	1/8
WE06LR1/4CFX	6	1/4
WE08LRCFX	8	1/4
WE08LR1/8CFX	8	1/8
WE08LR3/8CFX	8	3/8
WE10LRCFX	10	1/4
WE10LR3/8CFX	10	3/8
WE12LRCFX	12	3/8
WE12LR1/4CFX	12	1/4
WE12LR1/2CFX	12	1/2
WE15LRCFX	15	1/2
WE18LRCFX	18	1/2
WE22LRCFX	22	3/4
WE28LRCFX	28	1
WE35LRCFX	35	1 1/4
WE42LRCFX	42	1 1/2
WE06SRCFX	6	1/4
WE08SRCFX	8	1/4
WE10SRCFX	10	3/8
WE12SRCFX	12	3/8
WE12SR1/2CFX	12	1/2
WE14SRCFX	14	1/2
WE16SRCFX	16	1/2
WE20SRCFX	20	3/4
WE25SRCFX	25	1
WE30SRCFX	30	1 1/4
WE38SRCFX	38	1 1/2

**GE-M-ED - Male stud connector - Metric - E0lastic seal**

1



**63**  
Power  
One-Lok

Part number		Tube Outside Diameter	Thread
Steel	Stainless Steel	mm	Metric
GE06LMEDOMDCF	GE06LMEDOMD71	6	M10x1
GE08LMEDOMDCF	GE08LMEDOMD71	8	M12x1.5
GE10LMEDOMDCF	GE10LMEDOMD71	10	M14x1.5
GE10LM12X1.5EDOMDCF	-	10	M12x1.5
GE10LM16X1.5EDOMDCF	-	10	M16x1.5
GE10LM18X1.5EDOMDCF	-	10	M18x1.5
GE10LM22X1.5EDOMDCF	-	10	M22x1.5
GE12LMEDOMDCF	GE12LMEDOMD71	12	M16x1.5
GE12LM14X1.5EDOMDCF	-	12	M14x1.5
GE12LM18X1.5EDOMDCF	-	12	M18x1.5
GE12LM22X1.5EDOMDCF	-	12	M22x1.5
GE15LMEDOMDCF	-	15	M18x1.5
GE15LM16X1.5EDOMDCF	-	15	M16x1.5
GE15LM22X1.5EDOMDCF	GE15LM22X1.5EDOMD71	15	M22x1.5
GE18LMEDOMDCF	GE18LMEDOMD71	18	M22x1.5
GE18LM18X1.5EDOMDCF	GE18LM18X1.5EDOMD71	18	M18x1.5
GE22LMEDOMDCF	-	22	M26x1.5
GE22LM22X1.5EDOMDCF	-	22	M22x1.5
GE28LMEDOMDCF	-	28	M33x2
GE35LMEDOMDCF	-	35	M42x2
GE42LMEDOMDCF	-	42	M48x2
GE06SMEDOMDCF	-	6	M12x1.5
GE08SMEDOMDCF	GE08SMEDOMD71	8	M14x1.5
GE10SMEDOMDCF	-	10	M16x1.5
GE12SMEDOMDCF	GE12SMEDOMD71	12	M18x1.5
GE12SM22X1.5EDOMDCF	-	12	M22x1.5
GE14SMEDOMDCF	-	14	M20X1.5
GE16SMEDOMDCF	GE16SMEDOMD71	16	M22X1.5
GE16SM18X1.5EDOMDCF	-	16	M18X1.5
GE20SMEDOMDCF	-	20	M27x2
GE25SMEDOMDCF	GE25SMEDOMD71	25	M33x2
GE30SMEDOMDCF	-	30	M42x2
GE38SMEDOMDCF	GE38SMEDOMD71	38	M48x2

HYDRAULICS

**1 EGE-M-ED - Swivel connector - Metric - EOlastic seal**

HYDRAULICS



63 Parker Direct Link

Part number	Tube Outside Diameter	Thread
Steel	mm	Metric
EGE06LMEDCF	6	M10x1
EGE08LMEDCF	8	M12x1.5
EGE10LMEDCF	10	M14x1.5
EGE12LMEDCF	12	M16x1.5
EGE15LMEDCF	15	M18x1.5
EGE15LM22X1.5EDCF	15	M22x1.5
EGE18LMEDCF	18	M22x1.5
EGE22LMEDCF	22	M26x1.5
EGE28LMEDCF	28	M33x2
EGE35LMEDCF	35	M42x2
EGE42LMEDCF	42	M48x2
EGE06SMEDCF	6	M12x1.5
EGE08SMEDCF	8	M14x1.5
EGE10SMEDCF	10	M16x1.5
EGE12SMEDCF	12	M18x1.5
EGE14SMEDCF	14	M20x1.5
EGE16SMEDCF	16	M22x1.5
EGE20SMEDCF	20	M27x2
EGE25SMEDCF	25	M33x2
EGE30SMEDCF	30	M42x2
EGE38SMEDCF	38	M48x2

**EVGE-M-ED - Standpipe connector - Metric - EOlastic seal**



63 Parker Direct Link

Part number	Tube Outside Diameter	Thread
Steel	mm	Metric
EVGE06LMEDCF	6	M10x1
EVGE08LMEDCF	8	M12x1.5
EVGE10LMEDCF	10	M14x1.5
EVGE12LMEDCF	12	M16x1.5
EVGE15LMEDCF	15	M18x1.5
EVGE18LMEDCF	18	M22x1.5
EVGE22LMEDCF	22	M26x1.5
EVGE28LMEDCF	28	M33x2
EVGE08SMEDCF	8	M14x1.5
EVGE10SMEDCF	10	M16x1.5
EVGE12SMEDCF	12	M18x1.5
EVGE16SMEDCF	16	M22x1.5
EVGE20SMEDCF	20	M27x2
EVGE25SMEDCF	25	M33x2
EVGE30SMEDCF	30	M42x2

**SWVE-M - Banjo elbow - Metric**



63 Parker PowerLine

Part number	Tube Outside Diameter	Thread
Steel	mm	Metric
SWVE06LMOMDCF	6	M10x1
SWVE08LMOMDCF	8	M12x1.5
SWVE10LMOMDCF	10	M14x1.5
SWVE12LMOMDCF	12	M16x1.5
SWVE15LMOMDCF	15	M18x1.5
SWVE18LMOMDCF	18	M22x1.5
SWVE22LMOMDCF	22	M26x1.5
SWVE06SMOMDCF	6	M12x1.5
SWVE08SMOMDCF	8	M14x1.5
SWVE10SMOMDCF	10	M16x1.5

**DSVW-M - Low pressure banjo elbow - Metric**



63 Parker PowerLine

Part number	Tube Outside Diameter	Thread
Steel	mm	Metric
DSVW12LMOMDCF	12	M16x1.5
DSVW15LMOMDCF	15	M18x1.5
DSVW18LMOMDCF	18	M22x1.5
DSVW22LMOMDCF	22	M26x1.5
DSVW28LMOMDCF	28	M33x2

**1 WH-M - High pressure banjo elbow - Metric with metal sealing ring**



63 Parker PowerLink

Part number	Tube Outside Diameter	Thread
Steel	mm	Metric
WH06LMOMDCF	6	M10x1
WH08LMOMDCF	8	M12x1.5
WH10LMOMDCF	10	M14x1.5
WH12LMOMDCF	12	M16x1.5
WH15LMOMDCF	15	M18x1.5
WH18LMOMDCF	18	M22x1.5
WH22LMOMDCF	22	M26x1.5
WH35LMOMDCF	35	M42x2
WH06SMOMDCF	6	M12x1.5
WH10SMOMDCF	10	M16x1.5
WH12SMOMDCF	12	M18x1.5
WH16SMOMDCF	16	M22x1.5
WH20SMOMDCF	20	M27x2
WH30SMOMDCF	30	M42x2

**WH-M-KDS - High pressure banjo elbow - Metric with soft sealing**



63 Parker PowerLink

Part number	Tube Outside Diameter	Thread
Steel	mm	Metric
WH06LMKDSOMDCF	6	M10x1
WH08LMKDSOMDCF	8	M12x1.5
WH10LMKDSOMDCF	10	M14x1.5
WH12LMKDSOMDCF	12	M16x1.5
WH15LMKDSOMDCF	15	M18x1.5
WH18LMKDSOMDCF	18	M22x1.5
WH22LMKDSOMDCF	22	M26x1.5
WH28LMKDSOMDCF	28	M33x2
WH35LMKDSOMDCF	35	M42x2
WH06SMKDSOMDCF	6	M12x1.5
WH08SMKDSOMDCF	8	M14x1.5
WH10SMKDSOMDCF	10	M16x1.5
WH12SMKDSOMDCF	12	M18x1.5
WH16SMKDSOMDCF	16	M22x1.5
WH20SMKDSOMDCF	20	M27x2
WH25SMKDSOMDCF	25	M33x2
WH30SMKDSOMDCF	30	M42x2
WH38SMKDSOMDCF	38	M48x2

HYDRAULICS

**TH-M - High pressure banjo tee - Metric with metal sealing ring**



63 Parker PowerLine

Part number	Tube Outside Diameter	Thread
Steel	mm	Metric
TH06LMOMDCF	6	M10x1
TH08LMOMDCF	8	M12x1.5
TH10LMOMDCF	10	M14x1.5
TH12LMOMDCF	12	M16x1.5
TH12SMOMDCF	12	M18x1.5
TH16SMOMDCF	16	M22x1.5
TH20SMOMDCF	20	M27x2

**TH-M-KDS - High pressure banjo tee - Metric with soft seal ring**



63 Parker PowerLine

Part number	Tube Outside Diameter	Thread
Steel	mm	Metric
TH06LMKDSOMDCF	6	M10x1
TH08LMKDSOMDCF	8	M12x1.5
TH10LMKDSOMDCF	10	M14x1.5
TH12LMKDSOMDCF	12	M16x1.5



**1 GE-M-KEG - Male stud connector - Male short metric taper thread**

HYDRAULICS



63 Parker Direct Link

Part number	Tube Outside Diameter	Thread
Steel	mm	Metric
GE04LLMCFX	4	M8x1
GE06LLMCFX	6	M10x1
GE08LLMCFX	8	M10x1

**WE-M - Male stud elbow metric - Metal sealing edge**



63 Parker Direct Link

Part number	Tube Outside Diameter	Thread
Steel	mm	Metric
WE06LMCFX	6	M10x1
WE08LMCFX	8	M12x1.5
WE10LMCFX	10	M14x1.5
WE18LMCFX	18	M22x1.5
WE16SMCFX	18	M22x1.5

**GEO - Male stud connector - Metric - O-Ring**



63 Parker PowerLine

Part number	Tube Outside Diameter	Thread
Steel	mm	Metric
GEO06LMOMDCF	6	M10x1
GEO08LMOMDCF	8	M12x1.5
GEO10LMOMDCF	10	M14x1.5
GEO12LMOMDCF	12	M16x1.5
GEO15LMOMDCF	15	M18x1.5
GEO18LMOMDCF	18	M22x1.5
GEO28LMOMDCF	28	M33x2
GEO35LMOMDCF	35	M42x2
GEO42LMOMDCF	42	M48x2
GEO06SMOMDCF	6	M12x1.5
GEO08SMOMDCF	8	M14x1.5
GEO12SMOMDCF	12	M18x1.5
GEO16SMOMDCF	16	M22x1.5
GEO20SMOMDCF	20	M27x2
GEO25SMOMDCF	25	M33x2
GEO38SMOMDCF	38	M48x2

**EGEO - Swivel connector - O-Ring**



63 Parker PowerLine

Part number	Tube Outside Diameter	Thread
Steel	mm	Metric
EGEO06LMCF	6	M10x1
EGEO08LMCF	8	M12x1.5
EGEO10LMCF	10	M14x1.5
EGEO12LMCF	12	M16x1.5
EGEO15LMCF	15	M18x1.5
EGEO18LMCF	18	M22x1.5
EGEO22LM27X2CF	22	M27x2
EGEO28LMCF	28	M33x2
EGEO08SMCF	8	M14x1.5
EGEO12SMCF	12	M18x1.5
EGEO16SMCF	16	M22x1.5
EGEO20SMCF	20	M27x2
EGEO25SMCF	25	M33x2
EGEO38SMCF	38	M48x2

**1** GE-UNF/UN - Male stud connector - O-Ring

HYDRAULICS



63 Parker Direct Link

Part number	Tube Outside Diameter	Thread
Steel	mm	UN/UNF-2A
GE08L7/16UNFOMDCF	8	7/16-20
GE10L7/16UNFOMDCF	10	7/16-20
GE12L9/16UNFOMDCF	12	9/16-18
GE12L3/4UNFOMDCF	12	3/4-16
GE12L7/8UNFOMDCF	12	7/8-14
GE15L3/4UNFOMDCF	15	3/4-16
GE15L7/8UNFOMDCF	15	7/8-14
GE18L3/4UNFOMDCF	18	3/4-16
GE18L7/8UNFOMDCF	18	7/8-14
GE22L7/8UNFOMDCF	22	7/8-14
GE22L11/16UNOMDCF	22	11/16
GE22L15/16UNOMDCF	22	15/16-12
GE28L11/16UNOMDCF	28	11/16-12
GE28L15/16UNOMDCF	28	15/16-12
GE35L15/16UNOMDCF	35	15/16-12
GE35L15/8UNOMDCF	35	15/8-12
GE42L15/8UNOMDCF	42	15/8-12
GE08S7/16UNFOMDCF	8	7/16-20
GE10S9/16UNFOMDCF	10	9/16-18
GE12S9/16UNFOMDCF	12	9/16-18
GE12S3/4UNFOMDCF	12	3/4-16
GE16S3/4UNFOMDCF	16	3/4-16
GE16S7/8UNFOMDCF	16	7/8-14
GE20S3/4UNFOMDCF	20	3/4-16
GE20S7/8UNFOMDCF	20	7/8-14
GE20S11/16UNOMDCF	20	11/16-12
GE25S11/16UNOMDCF	25	11/16-12
GE25S15/16UNOMDCF	25	15/16-12
GE30S15/16UNOMDCF	30	15/16-12
GE30S15/8UNOMDCF	30	15/8-12
GE38S15/8UNOMDCF	38	15/8-12

**GE-NPT - Male stud connector - NPT thread**



63 Parker Direct Link

Part number	Tube Outside Diameter	Thread
Steel	mm	NPTF
GE06L1/8NPTCFX	6	1/8-27
GE06L1/4NPTCFX	6	1/4-18
GE06L1/2NPTCFX	6	1/2-14
GE08L1/8NPTCFX	8	1/8-27
GE08L1/4NPTCFX	8	1/4-18
GE08L3/8NPTCFX	8	3/8-18
GE08L1/2NPTCFX	8	1/2-14
GE10L1/8NPTCFX	10	1/8-27
GE10L1/4NPTCFX	10	1/4-18
GE10L3/8NPTCFX	10	3/8-18
GE10L1/2NPTCFX	10	1/2-14
GE12L1/8NPTCFX	12	1/8-27
GE12L1/4NPTCFX	12	1/4-18
GE12L3/8NPTCFX	12	3/8-18
GE12L1/2NPTCFX	12	1/2-14
GE15L1/2NPTCFX	15	1/2-14
GE15L3/4NPTCFX	15	3/4-14
GE18L1/2NPTCFX	18	1/2-14
GE22L1/2NPTCFX	22	1/2-14
GE22L3/4NPTCFX	22	3/4-14
GE22L1NPTCFX	22	1-1 1/2
GE28L3/4NPTCFX	28	3/4-14
GE28L1NPTCFX	28	1-1 1/2
GE35L11/4NPTCFX	35	1 1/4-1 1/2
GE42L11/4NPTCFX	42	1 1/4-1 1/2
GE42L11/2NPTCFX	42	1 1/2-1 1/2
GE06S1/4NPTCFX	6	1/4-18
GE06S1/2NPTCFX	6	1/2-14
GE08S3/8NPTCFX	8	3/4-18
GE10S3/8NPTCFX	10	3/8-18
GE10S1/2NPTCFX	10	1/2-14
GE12S3/4NPTCFX	12	1/4-18
GE12S3/8NPTCFX	12	3/8-18
GE12S1/2NPTCFX	12	1/2-14
GE14S1/2NPTCFX	14	1/2-14
GE16S1/2NPTCFX	16	1/2-14
GE16S3/4NPTCFX	16	3/4-14
GE20S1/2NPTCFX	20	1/2-14
GE20S3/4NPTCFX	20	3/4-14
GE25S3/4NPTCFX	25	3/4-14
GE25S1NPTCFX	25	1-1 1/2
GE30S1NPTCFX	30	1-1 1/2
GE30S11/4NPTCFX	30	1 1/4-1 1/2
GE38S11/2NPTCFX	38	1 1/2-1 1/2

# 1 EGE-NPT - Swivel connector



63 Parker Direct Link

Part number	Tube Outside Diameter	Thread
Steel	mm	NPTF
EGE06L1/8NPTCF	6	1/8-27
EGE08L1/4NPTCF	8	1/4-18
EGE10L1/4NPTCF	10	1/4-18
EGE12L3/8NPTCF	12	3/8-18
EGE15L1/2NPTCF	15	1/2-14
EGE22L3/4NPTCF	22	3/4-14
EGE28L1NPTCF	28	1-1 1/2
EGE35L11/4NPTCF	35	1 1/4-1 1/2
EGE08S1/4NPTCF	8	1/4-18
EGE10S3/8NPTCF	10	3/8-18
EGE12S3/8NPTCF	12	3/8-18
EGE14S1/2NPTCF	14	1/2-14
EGE16S1/2NPTCF	16	1/2-14
EGE20S3/4NPTCF	20	3/4-14
EGE25S1NPTCF	25	1-1 1/2
EGE30S11/4NPTCF	30	1 1/4-1 1/2
EGE38S11/2NPTCF	38	1 1/2-1 1/2

# WE-NPT - Male stud elbow



63 Parker Direct Link

Part number	Tube Outside Diameter	Thread
Steel	mm	NPTF
WE06L1/8NPTCFX	6	1/8-27
WE06L1/4NPTCFX	6	1/4-18
WE08L1/8NPTCFX	8	1/8-27
WE08L1/4NPTCFX	8	1/4-18
WE10L1/4NPTCFX	10	1/4-18
WE10L3/8NPTCFX	10	3/8-18
WE12L3/8NPTCFX	12	3/8-18
WE12L1/2NPTCFX	12	1/2-14
WE15L1/2NPTCFX	15	1/2-14
WE18L1/2NPTCFX	18	1/2-14
WE22L3/4NPTCFX	22	3/4-14
WE28L1NPTCFX	28	1-1 1/2
WE35L11/4NPTCFX	35	1 1/4-1 1/2
WE42L11/2NPTCFX	42	1 1/2-1 1/2
WE06S1/4NPTCFX	6	1/4-18
WE08S1/4NPTCFX	8	1/4-18
WE10S3/8NPTCFX	10	3/8-18
WE12S1/2NPTCFX	12	1/2-14
WE16S1/2NPTCFX	16	1/2-14
WE20S3/4NPTCFX	20	3/4-14
WE25S1NPTCFX	25	1-1 1/2
WE30S11/4NPTCFX	30	1 1/4-1 1/2

**GAI-R - Female connector - BSPP**



63 Parker Direct Link

Part number	Tube Outside Diameter	Thread
Steel	mm	BSPP
GAI06LRCFX	6	1/8
GAI06LR1/4CFX	6	1/4
GAI08LRCFX	8	1/4
GAI08LR3/8CFX	8	3/8
GAI10LRCFX	10	1/4
GAI10LR3/8CFX	10	3/8
GAI12LRCFX	12	3/8
GAI12LR1/2CFX	12	1/2
GAI15LRCFX	15	1/2
GAI18LRCFX	18	1/2
GAI18LR3/8CFX	18	3/8
GAI22LRCFX	22	3/4
GAI28LRCFX	28	1
GAI35LRCFX	35	1 1/4
GAI42LRCFX	42	1 1/2
GAI08SRCFX	8	1/4
GAI10SRCFX	10	3/8
GAI12SRCFX	12	3/8
GAI12SR1/2CFX	12	1/2
GAI14SRCFX	14	1/2
GAI16SRCFX	16	1/2
GAI20SRCFX	20	3/4
GAI25SRCFX	25	1
GAI30SRCFX	30	1 1/4
GAI38SRCFX	38	1 1/2

**GAI-M - Female connector - Metric**



63 Parker Direct Link

Part number	Tube Outside Diameter	Thread
Steel	mm	Metric
GAI06LMCFX	6	M10x1
GAI08LMCFX	8	M12x1.5
GAI10LMCFX	10	M14x1.5
GAI12LMCFX	12	M16x1.5
GAI15LMCFX	15	M18x1.5
GAI18LMCFX	18	M22x1.5
GAI22LMCFX	22	M26x1.5
GAI28LMCFX	28	M33x2
GAI35LMCFX	35	M42x2
GAI42LMCFX	42	M48x2
GAI06SMCFX	6	M12x1.5
GAI08SMCFX	8	M14x1.5
GAI10SMCFX	10	M16x1.5
GAI12SMCFX	12	M18x1.5
GAI14SMCFX	14	M20x1.5
GAI16SMCFX	16	M22x1.5

**1** GAI-NPT - Female connector - NPT



63 Parker DirectLink

Part number	Tube Outside Diameter	Thread
Steel	mm	NPTF
GAI06L1/8NPTCFX	6	1/8-27
GAI08L1/4NPTCFX	8	1/4-18

**MAV - Pressure gauge connector female - BSPP**



63 Parker DirectLink

Part number	Tube Outside Diameter	Thread
Steel	mm	BSPP
MAV06LROMDCF	6	1/4
MAV08LROMDCF	8	1/4
MAV10LROMDCF	10	1/4
MAV12LROMDCF	12	1/4
MAV06SRMDCF	6	1/2
MAV08SRMDCF	8	1/2
MAV10SRMDCF	10	1/2
MAV12SRMDCF	12	1/2

**MAVE - Pressure gauge swivel connector female - BSPP**



63 Parker DirectLink

Part number		Tube Outside Diameter	Thread
Steel	Stainless Steel	mm	BSPP
MAVE06LRFC	-	6	1/4
MAVE08LRFC	MAVE08LR71	8	1/4
MAVE10LRFC	MAVE10LR71	10	1/4
MAVE12LRFC	MAVE12LR71	12	1/4
MAVE06SRFC	-	6	1/2
MAVE06SR1/4CF	-	6	1/4
MAVE08SRFC	MAVE08SR71	8	1/2
MAVE08SR1/4CF	-	8	1/4
MAVE10SRFC	MAVE10SR71	10	1/2
MAVE10SR1/4CF	-	10	1/4
MAVE12SRFC	MAVE12SR71	12	1/2
MAVE12SR1/4CF	MAVE12SR1/471	12	1/4

RED - Tube end reducer EO 24°



63 Parker  
DuroLine

Part number	Outside Diameter	
	Tube 1	Tube 2
Steel	mm	mm
RED06L/04LLOMDCF	6	4
RED08/06LOMDCF	8	6
RED10/06LOMDCF	10	6
RED10/08LOMDCF	10	8
RED12/06LOMDCF	12	6
RED12/08LOMDCF	12	8
RED12/10LOMDCF	12	10
RED15/06LOMDCF	15	6
RED15/08LOMDCF	15	8
RED15/10LOMDCF	15	10
RED15/12LOMDCF	15	12
RED18/06LOMDCF	18	6
RED18/08LOMDCF	18	8
RED18/10LOMDCF	18	10
RED18/12LOMDCF	18	12
RED18/15LOMDCF	18	15
RED18L/16SOMDCF	18	16
RED22/06LOMDCF	22	6
RED22/08LOMDCF	22	8
RED22/10LOMDCF	22	10
RED22/12LOMDCF	22	12
RED22/15LOMDCF	22	15
RED22L/16SOMDCF	22	16
RED22/18LOMDCF	22	18
RED22L/20SOMDCF	22	20
RED28/06LOMDCF	28	6
RED28/08LOMDCF	28	8
RED28/10LOMDCF	28	10
RED28/12LOMDCF	28	12
RED28/15LOMDCF	28	15
RED28L/16SOMDCF	28	16
RED28/18LOMDCF	28	18
RED28/22LOMDCF	28	22
RED28L/25SOMDCF	28	25
RED35/06LOMDCF	35	6
RED35/08LOMDCF	35	8
RED35/10LOMDCF	35	10
RED35/12LOMDCF	35	12
RED35/15LOMDCF	35	15
RED35/18LOMDCF	35	18
RED35/22LOMDCF	35	22
RED35L/25SOMDCF	35	25
RED35/28LOMDCF	35	28
RED35L/30SOMDCF	35	30
RED42/10LOMDCF	42	10
RED42/12LOMDCF	42	12
RED42/15LOMDCF	42	15
RED42/18LOMDCF	42	18
RED42/22LOMDCF	42	22
RED42/28LOMDCF	42	28
RED42L/30SOMDCF	42	30
RED42/35LOMDCF	42	35
RED42L/38SOMDCF	42	38





**1** RED - Tube end reducer EO 24° (cont'd)

HYDRAULICS



63 Parker PowerLok

Part number	Outside Diameter	
	Tube 1	Tube 2
Steel	mm	mm
RED08/06SOMDCF	8	6
RED10/06SOMDCF	10	6
RED10/08SOMDCF	10	8
RED12/06SOMDCF	12	6
RED12/08SOMDCF	12	8
RED12/10SOMDCF	12	10
RED14/06SOMDCF	14	6
RED14/08SOMDCF	14	8
RED14/10SOMDCF	14	10
RED14/12SOMDCF	14	12
RED16/06SOMDCF	16	6
RED16/08SOMDCF	16	8
RED16/10SOMDCF	16	10
RED16/12SOMDCF	16	12
RED16/14SOMDCF	16	14
RED16S/15LOMDCF	16	15
RED20/06SOMDCF	20	6
RED20/08SOMDCF	20	8
RED20/10SOMDCF	20	10
RED20/12SOMDCF	20	12
RED20/14SOMDCF	20	14
RED20S/15LOMDCF	20	15
RED20/16SOMDCF	20	16
RED20S/18LOMDCF	20	18
RED25/06SOMDCF	25	6
RED25/08SOMDCF	25	8
RED25/10SOMDCF	25	10
RED25/12SOMDCF	25	12
RED25/14SOMDCF	25	14
RED25/16SOMDCF	25	16
RED25S/18LOMDCF	25	18
RED25/20SOMDCF	25	20
RED25S/22LOMDCF	25	22
RED30/06SOMDCF	30	6
RED30/08SOMDCF	30	8
RED30/10SOMDCF	30	10
RED30/12SOMDCF	30	12
RED30/16SOMDCF	30	16
RED30/20SOMDCF	30	20
RED30S/22LOMDCF	30	22
RED30/25SOMDCF	30	25
RED30S/28LOMDCF	30	28
RED38/06SOMDCF	38	6
RED38/08SOMDCF	38	8
RED38/10SOMDCF	38	10
RED38/12SOMDCF	38	12
RED38/16SOMDCF	38	16
RED38/20SOMDCF	38	20
RED38/25SOMDCF	38	25
RED38S/28LOMDCF	38	28
RED38/30SOMDCF	38	30
RED38S/35LOMDCF	38	35



**RI-ED - Thread reducer/expander - BSPP - E0lastic seal**



63 Parker Direct Link

Part number Steel	Thread BSPP	
	Female	Male
RI1/8EDX1/4CF	1/4	1/8A
RI1/8EDX3/8CF	3/8	1/8A
RI1/4EDX1/8CF	1/8	1/4A
RI1/4EDX3/8CF	3/8	1/4A
RI1/4EDX1/2CF	1/2	1/4A
RI1/4EDX3/4CF	3/4	1/4A
RI3/8EDX1/8CF	1/8	3/8A
RI3/8EDX1/4CF	1/4	3/8A
RI3/8EDX1/2CF	1/2	3/8A
RI3/8EDX3/4CF	3/4	3/8A
RI1/2EDX1/8CF	1/8	1/2A
RI1/2EDX1/4CF	1/4	1/2A
RI1/2EDX3/8CF	3/8	1/2A
RI1/2EDX3/4CF	3/4	1/2A
RI1/2EDX1CF	1	1/2A
RI1/2EDX11/4CF	1 1/4	1/2A
RI3/4EDX1/4CF	1/4	3/4A
RI3/4EDX3/8CF	3/8	3/4A
RI3/4EDX1/2CF	1/2	3/4A
RI3/4EDX1CF	1	3/4A
RI3/4EDX11/4CF	1 1/4	3/4A
RI3/4EDX11/2CF	1 1/2	3/4A
RI1EDX1/4CF	1/4	1A
RI1EDX3/8CF	3/8	1A
RI1EDX1/2CF	1/2	1A
RI1EDX3/4CF	3/4	1A
RI1EDX11/4CF	1 1/4	1A
RI1EDX11/2CF	1 1/2	1A
RI11/4EDX1/2CF	1/2	1 1/4A
RI11/4EDX3/4CF	3/4	1 1/4A
RI11/4EDX1CF	1	1 1/4A
RI11/4EDX11/2CF	1 1/2	1 1/4A
RI11/2EDX1/2CF	1/2	1 1/2A
RI11/2EDX3/4CF	3/4	1 1/2A
RI11/2EDX1CF	1	1 1/2A
RI11/2EDX11/4CF	1 1/4	1 1/2A
RI2EDX11/2CF	1 1/2	2A

# 1 VKA - Blanking plug for cones EO 24°

HYDRAULICS



63 Parker Direct Link

Part number		Tube Outside Diameter
Steel	Stainless Steel	mm
VKA06CF	VKA0671	6
VKA08CF	VKA0871	8
VKA10CF	VKA1071	10
VKA12CF	VKA1271	12
VKA15CF	VKA1571	15
VKA18CF	-	18
VKA22CF	-	22
VKA28CF	VKA2871	28
VKA35CF	-	35
VKA42CF	-	42
VKA06CF	VKA0671	6
VKA08CF	VKA0871	8
VKA10CF	VKA1071	10
VKA12CF	VKA1271	12
VKA14CF	-	14
VKA16CF	VKA1671	16
VKA20CF	-	20
VKA25CF	-	25
VKA30CF	-	30
VKA38CF	-	38

# VSTI-M-ED - Blanking plug for ports - Metric - EOlastic seal



63 Parker Direct Link

Part number		Thread
Steel	Stainless Steel	Metric
VSTI10X1EDCF	VSTI10X1ED71	M10X1
VSTI12X1.5EDCF	VSTI12X1.5ED71	M12X1.5
VSTI14X1.5EDCF	-	M14X1.5
VSTI16X1.5EDCF	-	M16X1.5
VSTI18X1.5EDCF	-	M18X1.5
VSTI20X1.5EDCF	VSTI20X1.5ED71	M20X1.5
VSTI22X1.5EDCF	-	M22X1.5
VSTI26X1.5EDCF	-	M26X1.5
VSTI27X2EDCF	-	M27X2
VSTI33X2EDCF	-	M33X2
VSTI42X2EDCF	-	M42X2
VSTI48X2EDCF	-	M48X2

**VSTI-R-ED - Blanking plug for ports - BSPP - E0lastic seal**



63 Parker Direct Link

Part number Steel	Stainless Steel	Thread BSPP
VSTI1/8EDCF	VSTI1/8ED71	1/8A
VSTI1/4EDCF	VSTI1/4ED71	1/4A
VSTI3/8EDCF	VSTI3/8ED71	3/8A
VSTI1/2EDCF	VSTI1/2ED71	1/2A
VSTI3/4EDCF	VSTI3/4ED71	3/4A
VSTI1EDCF	VSTI1ED71	1A
VSTI11/4EDCF	VSTI11/4ED71	1 1/4A
VSTI11/2EDCF	VSTI11/2ED71	1 1/2A

**VSTI M-OR - Blanking plug for ports - Metric - O-Ring**



63 Parker Direct Link

Part number Steel	Thread Metric
VSTI8X10RCF	M8X1
VSTI10X10RCF	M10X1
VSTI12X1.50RCF	M12X1.5
VSTI14X1.50RCF	M14X1.5
VSTI16X1.50RCF	M16X1.5
VSTI18X1.50RCF	M18X1.5
VSTI22X1.50RCF	M22X1.5
VSTI26X1.50RCF	M26X1.5
VSTI27X20RCF	M27X2
VSTI33X20RCF	M33X2
VSTI42X20RCF	M42X2
VSTI48X20RCF	M48X2

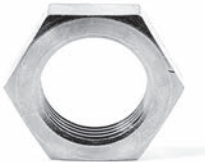
# 1 ROV - Blanking plug for tube ends



63 Parker  
Direct Link

Part number Steel	Tube Outside Diameter mm
ROV06LCF	6
ROV08LCF	8
ROV10LCF	10
ROV12LCF	12
ROV15LCF	15
ROV18LCF	18
ROV22LCF	22
ROV28LCF	28
ROV35LCF	35
ROV42LCF	42
ROV06SCF	6
ROV08SCF	8
ROV10SCF	10
ROV12SCF	12
ROV14SCF	14
ROV16SCF	16
ROV20SCF	20
ROV25SCF	25
ROV30SCF	30
ROV38SCF	38

# GM - Locknut for bulk heads



63 Parker  
Power Link

Part number Steel	Tube Outside Diameter mm	Thread Metric
GM06LCFX	6	M12x1.5
GM08LCFX	8	M14x1.5
GM10LCFX	10	M16x1.5
GM12LCFX	12	M18x1.5
GM15LCFX	15	M22x1.5
GM18LCFX	18	M26x1.5
GM22LCFX	22	M30x2
GM28LCFX	28	M36x2
GM35LCFX	35	M45x2
GM42LCFX	42	M52x2
GM08LCFX	8	M14x1.5
GM10LCFX	10	M16x1.5
GM12LCFX	12	M18x1.5
GM12SCFX	12	M20x1.5
GM15LCFX	15	M22x1.5
GM16SCFX	16	M24x1.5
GM22LCFX	22	M30x2
GM28LCFX	28	M36x2
GM30SCFX	30	M42x2
GM42LCFX	42	M52x2

VH - Support sleeve



63 Parker Direct Link

Part number		Tube Inside Diameter
Steel	Stainless Steel	mm
VH04CFX	VH0471X	4
VH05CFX	VH0571X	5
VH06CFX	VH0671X	6
VH07CFX	VH0771X	7
VH08CFX	VH0871X	8
VH09CFX	VH0971X	9
VH10CFX	VH1071X	10
VH15CFX	VH1571X	15
VH18CFX	VH1871X	18
VH19CFX	VH1971X	19
VH24CFX	VH2471X	24
VH25CFX	VH2571X	25
VH31CFX	-	31
VH33CFX	-	33
VH38CFX	VH3871X	38

E - Tube/hose insert for plastic tubing



63 Parker Direct Link

Part number	Tube Inside Diameter	Tube Outside Diameter
	mm	mm
E04/02X	2	4
E04/2.5X	2.5	4
E0506/03X	3	6
E0506/04X	4	6
E08/04X	4	8
E06/05X	5	6
E08/05X	5	8
E10/08X	8	10
E12/08X	8	12
E12/09X	9	12
E1215/10X	10	12
E15/12X	12	15
E18/14X	14	18
E22/18X	18	22

# 1 DOZ - EO-2 - Soft sealing ring



63 Parker Direct Link

Part number		Tube Outside Diameter
Steel	Stainless Steel	mm
DOZ06L	DOZ06L71	6
DOZ08L	DOZ08L71	8
DOZ10L	DOZ10L71	10
DOZ12L	DOZ12L71	12
DOZ15L	DOZ15L71	15
DOZ18L	DOZ18L71	18
DOZ22L	DOZ22L71	22
DOZ28L	DOZ28L71	28
DOZ35L	DOZ35L71	35
DOZ42L	DOZ42L71	42
DOZ06S	DOZ06S71	6
DOZ08S	DOZ08S71	8
DOZ10S	DOZ10S71	10
DOZ12S	DOZ12S71	12
DOZ14S	DOZ14S71	14
DOZ16S	DOZ16S71	16
DOZ20S	DOZ20S71	20
DOZ25S	DOZ25S71	25
DOZ30S	DOZ30S71	30
DOZ38S	DOZ38S71	38

# KDS - Soft sealing ring for banjo fittings WH/TH in steel



63 Parker Direct Link

Part number	Thread	
	Metric	BSPP
KDS10X	M10X1	1/8A
KDS12X	M12X1.5	
KDS14X	M14X1.5	1/4A
KDS16X	M16X1.5	3/8A
KDS18X	M18X1.5	
KDS22X	M22X1.5	1/2A
KDS27X	M27X2	3/4A
KDS33X	M33X2	1A
KDS42X	M42X2	1 1/4A
KDS48X	M48X2	1 1/2A

**ED - EOlastic soft seal for BSPP and metric thread**



63 Parker Direct Link

Part number	Thread	
	Metric	BSPP
ED8X1X	M8X1	
ED10X1X	M10X1	1/8A
ED12X1.5X	M12X1.5	
ED14X1.5X	M14X1.5	1/4A
ED16X1.5X	M16X1.5	
ED3/8X	-	3/8A
ED18X1.5X	M18X1.5	
ED20X1.5X	M20X1.5	
ED1/2X	-	1/2A
ED22X1.5X	M22X1.5	
ED26X1.5X	M26X1.5	3/4A
ED33X2X	M33X2	1A
ED42X2X	M42X2	1 1/4A
ED48X2X	M48X2	1 1/2A

**OR - O-Ring FKM for fittings with EO 24° DKO swivel**



63 Parker Direct Link

Part number	Tube Outside Diameter
	mm
OR4.5X1.5VITX	6
OR6.5X1.5VITX	8
OR20X2VITX	22
OR26X2VITX	28
OR32X2.5VITX	35
OR8.5X1.5VITX	10
OR12X2VITX	14

**DKAZ - Sealing ring for low pressure banjos - Metric**



63 Parker Direct Link

Part number	Thread
	Metric
DKAZ10CFX	M10X1
DKAZ12CFX	M12X1.5
DKAZ14CFX	M14X1.5
DKAZ16CFX	M16X1.5
DKAZ18CFX	M18X1.5
DKAZ20CFX	M20X1.5
DKAZ22CFX	M22X1.5
DKAZ26CFX	M26X1.5
DKAZ27CFX	M27X2
DKAZ33CFX	M33X2
DKAZ11/4CFX	M42X2
DKAZ11/2CFX	M48X2



# 1 DKAZ - Sealing ring for low pressure banjos - BSPP

H  
Y  
D  
R  
A  
U  
L  
I  
C  
S



63 Parker DirectLink

Part number	Thread BSPP
DKAZ1/8CFX	1/8A
DKAZ1/4CFX	1/4A
DKAZ3/8CFX	3/8A
DKAZ1/2CFX	1/2A
DKAZ3/4CFX	3/4A
DKAZ1CFX	1A
DKAZ11/4CFX	1 1/4A
DKAZ11/2CFX	1 1/2A

# DKI - Sealing ring for pressure gauge connectors



63 Parker DirectLink

Part number	Thread BSPP
DKI1/4CFX	1/4A
DKI1/2CFX	1/2A

**DPR - Progressive Ring for Stainless Steel Fittings**



63 Parker Direct Link

Part number	Tube Outside Diameter mm
DPR06L71X	6
DPR08L71X	8
DPR10L71X	10
DPR12L71X	12
DPR15L71X	15
DPR18L71X	18
DPR22L71X	22
DPR28L71X	28
DPR35L71X	35
DPR42L71X	42
DPR06L71X	6
DPR08L71X	8
DPR10L71X	10
DPR12L71X	12
DPR14S71X	14
DPR16S71X	16
DPR20S71X	20
DPR25S71X	25
DPR30S71X	30
DPR38S71X	38

**M Nut - EO 24° Cone end**



63 Parker Direct Link

Part number		Tube Outside Diameter mm
Steel	Stainless Steel	
M06LCFX	M06LEODURX	6
M08LCFX	M08LEODURX	8
M10LCFX	M10LEODURX	10
M12LCFX	M12LEODURX	12
M15LCFX	M15LEODURX	15
M18LCFX	M18LEODURX	18
M22LCFX	M22LEODURX	22
M28LCFX	M28LEODURX	28
M35LCFX	M35LEODURX	35
M42LCFX	M42LEODURX	42
M06SCFX	M06SEODURX	6
M08SCFX	M08SEODURX	8
M10SCFX	M10SEODURX	10
M12SCFX	M12SEODURX	12
M14SCFX	M14SEODURX	14
M16SCFX	M16SEODURX	16
M20SCFX	M20SEODURX	20
M25SCFX	M25SEODURX	25
M30SCFX	M30SEODURX	30
M38SCFX	M38SEODURX	38

# 1 PSR - Progressive Stop Ring for EO 24° cone



63 Parker Direct Link

Part number	Tube Outside Diameter mm
PSR06LX	6
PSR08LX	8
PSR10LX	10
PSR12LX	12
PSR15LX	15
PSR18LX	18
PSR22LX	22
PSR28LX	28
PSR35LX	35
PSR42LX	42
PSR14SX	14
PSR16SX	16
PSR20SX	20
PSR25SX	25
PSR30SX	30
PSR38SX	38

## FM - E02 - Functional nut



63 Parker Direct Link

Part number		Tube Outside Diameter	Thread
Steel	Stainless Steel	mm	Metric
FM06LCF	FM06L71	6	M12x1.5
FM08LCF	FM08L71	8	M14x1.5
FM10LCF	FM10L71	10	M16x1.5
FM12LCF	FM12L71	12	M18x1.5
FM15LCF	FM15L71	15	M22x1.5
FM18LCF	FM18L71	18	M26x1.5
FM22LCF	FM22L71	22	M30x2
FM28LCF	FM28L71	28	M36x2
FM35LCF	FM35L71	35	M45x2
FM42LCF	FM42L71	42	M52x2
FM06SCF	FM06S71	6	M14x1.5
FM08SCF	FM08S71	8	M16x1.5
FM10SCF	FM10S71	10	M18x1.5
FM12SCF	FM12S71	12	M20x1.5
FM14SCF	FM14S71	14	M22x1.5
FM16SCF	FM16S71	16	M24x1.5
FM20SCF	FM20S71	20	M30x2
FM25SCF	FM25S71	25	M36x2
FM30SCF	FM30S71	30	M42x2
FM38SCF	FM38S71	38	M52x2

<b>Description:</b>	<ul style="list-style-type: none"> <li>The orbital tube forming process flares hydraulic tube in a progressive action, resulting in a superior surface finish on the inner sealing area.</li> <li>Parflange® tube preparation and Triple-Lok® fittings combine to give long-term, reliable sealing performance.</li> </ul>
<b>Material:</b>	<ul style="list-style-type: none"> <li>Steel and Stainless Steel.</li> </ul>
<b>Product range:</b>	<ul style="list-style-type: none"> <li>Tube outside diameter 6 to 38 mm.</li> <li>Tube outside diameter 1/8" to 2".</li> </ul>
<b>Nominal pressure PN:</b>	<ul style="list-style-type: none"> <li>Size 4: 500 bar.</li> <li>Size 5, 6, 8: 420 bar.</li> <li>Size 10, 12, 14, 16: 350 bar.</li> <li>Size 20: 280 bar.</li> <li>Size 24: 210 bar.</li> <li>Size 32: 140 bar.</li> </ul>
<b>Advantages:</b>	<ul style="list-style-type: none"> <li>Pressure rated up to 500 bar nominal pressure with 4x design factor.</li> <li>Wide temperature and media compatibility.</li> <li>Fitting sleeves make the system suitable for inch and metric tubing by merely changing the sleeve.</li> <li>Forged shapes with no brazed joints to leak.</li> <li>Conforms to SAE and ISO standards. 37° fittings are the most widely used fitting type in the world.</li> <li>Standard materials offered are steel, stainless steel and brass.</li> </ul>
<b>Benefits:</b>	<ul style="list-style-type: none"> <li>No risk of tear out of the tube, thus giving the system a reputation for safety.</li> <li>Metal-to-metal seal allows a range of uses in many applications.</li> <li>The optimum wall thickness tubing can be used, reducing overall system cost.</li> <li>Forgings provide higher dependability and longer life compared with multiple component brazed constructions.</li> <li>Shaped fittings maintain a full flow area and have good re-usability.</li> <li>Worldwide availability and interchangeability.</li> </ul>

**HMTX - Union**



63 Parker Power-Lok

Part number		Outside Diameter			
Steel	Stainless Steel	Tube 1 inch	Tube 2 inch	Tube 1 mm	Tube 2 mm
4HMTXS	4HMTXSS	1/4	1/4	6	6
5HMTXS	-	5/16	5/16	8	8
6HMTXS	6HMTXSS	3/8	3/8	10	10
8HMTXS	8HMTXSS	1/2	1/2	12	12
10HMTXS	10HMTXSS	5/8	5/8	14, 15, 16	14, 15, 16
10-8HMTXS	-	5/8	1/2	14, 15, 16	12
12HMTXS	12HMTXSS	3/4	3/4	18, 20	18, 20
16HMTXS	16HMTXSS	1	1	25	25
20HMTXS	20HMTXSS	1 1/4	1 1/4	28, 30, 32	28, 30, 32

**1** EMTX - Union elbow



63 Parker  
PowerLok

Part number	Outside Diameter	
	Tube 1	Tube 2
Steel	inch	inch
4EMTXS	1/4	6
5EMTXS	5/16	8
6EMTXS	3/8	10
8EMTXS	1/2	12
10EMTXS	5/8	14, 15, 16
12EMTXS	3/4	18, 20
16EMTXS	1	22, 25
20EMTXS	1 1/4	28, 30, 32

HYDRAULICS

**JMTX - Union tee**



63 Parker  
PowerLok

Part number	Steel	Stainless Steel	Tube Outside Diameter		Thread UN/UNF-2A
			inch	mm	
2 JTX-S	-	-	1/8	-	5/16-24
4JMTXS	4JMTXSS	-	1/4	6	7/16-20
5JMTXS	-	-	5/16	8	1/2-20
6JMTXS	6JMTXSS	-	3/8	10	9/16-18
8JMTXS	8JMTXSS	-	1/2	12	3/4-16
10JMTXS	10JMTXSS	-	5/8	14, 15, 16	7/8-14
12JMTXS	12JMTXSS	-	3/4	18, 20	1 1/16-12
14 JTX-S	-	-	7/8	22	1.3/16-12
16JMTXS	16JMTXSS	-	1	25	1 5/16-12
20JMTXS	20JMTXSS	-	1 1/4	28, 30, 32	1 5/8-12
24 JTX-S	-	-	1 1/2	35, 38	1 7/8-12



**KTX - Union cross**



63 Parker Direct Link

Part number	Steel	Stainless Steel	Tube Outside Diameter	
			inch	mm
4 KTX-S		4 KTX-SS	1/4	6
5 KTX-S		-	5/16	8
6 KTX-S		6 KTX-SS	3/8	10
8 KTX-S		8 KTX-SS	1/2	12
10 KTX-S		-	5/8	14, 15, 16
12 KTX-S		12 KTX-SS	3/4	18, 20
16 KTX-S		-	1	25

**WMTX - Bulkhead union**



63 Parker Direct Link

Part number	Steel	Stainless Steel	Tube Outside Diameter	
			inch	mm
4WMTXWLNMS		4WMTXWLNMS	1/4	6
5WMTXWLNMS		5WMTXWLNMS	5/16	8
6WMTXWLNMS		6WMTXWLNMS	3/8	10
8WMTXWLNMS		8WMTXWLNMS	1/2	12
10WMTXWLNMS		10WMTXWLNMS	5/8	14, 15, 16
12WMTXWLNMS		12WMTXWLNMS	3/4	18, 20
16WMTXWLNMS		16WMTXWLNMS	1	25
20WMTXWLNMS		20WMTXWLNMS	1 1/4	28, 30, 32

**1** WEMTX - Bulkhead union elbow



63 Parker  
PowerLok

Part number Steel	Tube Outside Diameter	
	inch	mm
4 WETX-WLN-S	1/4	6
5 WETX-WLN-S	5/16	8
6WEMTXWLNMS	3/8	10
8WEMTXWLNMS	1/2	12
10WEMTXWLNMS	5/8	14, 15, 16
12WEMTXWLNMS	3/4	18, 20
16 WETX-WLN-S	1	25
20 WETX-WLN-S	1 1/4	28, 30, 32

WNTX - 45° bulkhead union elbow



63 Parker  
PowerLok

Part number Steel	Tube Outside Diameter	
	inch	mm
4 WNTX-WLN-S	1/4	6
5 WNTX-WLN-S	5/16	8
6 WNTX-WLN-S	3/8	10
8 WNTX-WLN-S	1/2	12
10 WNTX-WLN-S	5/8	14, 15, 16
12 WNTX-WLN-S	3/4	18, 20
16 WNTX-WLN-S	1	22, 25
20 WNTX-WLN-S	1 1/4	28, 30, 32

WJTX - Bulkhead branch tee



63 Parker  
PowerLok

Part number Steel	Tube Outside Diameter	
	inch	mm
4 WJTX-WLN-S	1/4	6
6 WJTX-WLN-S	3/8	10
8 WJTX-WLN-S	1/2	12
10 WJTX-WLN-S	5/8	14, 15, 16
12 WJTX-WLN-S	3/4	18, 20
16 WJTX-WLN-S	1	22, 25

HYDRAULICS

**WLNMS - Bulkhead locknut**



63 Parker Triple-Lok

Part number Steel	Thread UNF
4WLNMS	7/16-20
5WLNMS	1/2-20
6WLNMS	9/16-18
8WLNMS	3/4-16
10WLNMS	7/8-14
12WLNMS	1 1/16-12
16WLNMS	1 5/16-12
20WLNMS	1 5/8-12
24WLNMS	1 7/8-12

**FMTX - Male stud connector**



63 Parker Triple-Lok

Part number Steel	Tube Outside Diameter		Thread	
	inch	mm	UNF	NPT/NPTF
4FMTXS	1/4	6	7/16-20	1/8-27
4-4FMTXS	1/4	6	7/16-20	1/4-18
4-6 FTX-S	1/4	6	7/16-20	3/8-18
4-8 FTX-S	1/4	6	7/16-20	1/2-14
5FMTXS	5/16	8	1/2-20	1/8-27
5-4FMTXS	5/16	8	1/2-20	1/4-18
6FMTXS	3/8	10	9/16-18	1/4-18
6-2 FTX-S	3/8	10	9/16-18	1/8-27
6-6FMTXS	3/8	10	9/16-18	3/8-18
6-8FMTXS	3/8	10	9/16-18	1/2-14
8FMTXS	1/2	12	3/4-16	3/8-18
8-4FMTXS	1/2	12	3/4-16	1/4-18
8-8FMTXS	1/2	12	3/4-16	1/2-14
8-12FMTXS	1/2	12	3/4-16	3/4-14
10FMTXS	5/8	14, 15, 16	7/8-14	1/2-14
10-12FMTXS	5/8	14, 15, 16	7/8-14	3/4-14
12 FTX-S	3/4	18, 20	1 1/16-12	3/4-14
12-6 FTX-S	3/4	18, 20	1 1/16-12	3/8-18
12-8 FTX-S	3/4	18, 20	1 1/16-12	1/2-14
12-16 FTX-S	3/4	18, 20	1 1/16-12	1-11 1/2
16FMTXS	1	25	1 5/16-12	1-11 1/2
16-12FMTXS	1	25	1 5/16-12	3/4-14
20FMTXS	1 1/4	28, 30, 32	1 5/8-12	1 1/4-11 1/2
20-16 FTX-S	1 1/4	28, 30, 32	1 5/8-12	1-11 1/2
24FMTXS	1 1/2	35, 38	1 7/8-12	1 1/2-11 1/2
24-20 FTX-S	1 1/2	35, 38	1 7/8-12	1 1/4-11 1/2



HYDRAULICS

# 1 CMTX - Male stud elbow



63 Triple-Lok

Part number	Steel	Stainless Steel	Tube Outside Diameter	
			inch	mm
4CMTXS	-	-	1/4	6
4-6 CTX-S	-	-	1/4	6
4-8 CTX-S	-	-	1/4	6
5-4 CTX-S	-	-	5/16	8
5-6 CTX-S	-	-	5/16	8
6CMTXS	-	6CMTXSS	3/8	10
6-2 CTX-S	-	-	3/8	10
6-6CMTXS	-	6-6CMTXSS	3/8	10
6-8CMTXS	-	6-8CMTXSS	3/8	10
8CMTXS	-	8CMTXSS	1/2	12
8-8CMTXS	-	8-8CMTXSS	1/2	12
8-12 CTX-S	-	8-12CMTXSS	1/2	12
10CMTXS	-	10CMTXSS	5/8	14, 15, 16
10-6 CTX-S	-	-	5/8	14, 15, 16
12 CTX-S	-	12CMTXSS	3/4	18, 20
12-8 CTX-S	-	12-8CMTXSS	3/4	18, 20
16 CTX-S	-	16CMTXSS	1	25
16-12 CTX-S	-	-	1	25
16-20 CTX-S	-	-	1	25
20 CTX-S	-	-	1 1/4	28, 30, 32
20-24 CTX-S	-	-	1 1/4	28, 30, 32
24 CTX-S	-	-	1 1/2	35, 38
24-20 CTX-S	-	-	1 1/2	35, 38

# VMTX - 45° male stud elbow



63 Direct-Lok

Part number	Steel	Tube Outside Diameter	
		inch	mm
4 VTX-S	-	1/4	6
4-4 VTX-S	-	1/4	6
5-4 VTX-S	-	5/16	8
6 VTX-S	-	3/8	10
6-2 VTX-S	-	3/8	10
6-6 VTX-S	-	3/8	10
8-4 VTX-S	-	1/2	12
8 VTX-S	-	1/2	12
8-8 VTX-S	-	1/2	12
8-12 VTX-S	-	1/2	12
10 VTX-S	-	5/8	14, 15, 16
10-6 VTX-S	-	5/8	14, 15, 16
10-12 VTX-S	-	5/8	14, 15, 16
12 VTX-S	-	3/4	18, 20
12-16 VTX-S	-	3/4	18, 20
16 VTX-S	-	1	25
16-12 VTX-S	-	1	25
24 VTX-S	-	1 1/2	35, 38



**RMTX - Male stud run tee**



63 Parker DirectLok

Part number Steel	Stainless Steel	Tube Outside Diameter	
		inch	mm
4 RTX-S	4 RTX-SS	1/4	6
4-4-4 RTX-S	4-4-4 RTX-SS	1/4	6
5 RTX-S	5 RTX-SS	5/16	8
6 RTX-S	6 RTX-SS	3/8	10
6-6-6 RTX-S	6-6-6 RTX-SS	3/8	10
8 RTX-S	8 RTX-SS	1/2	12
8-8-8 RTX-S	-	1/2	12
10 RTX-S	10 RTX-SS	5/8	14, 15, 16
12 RTX-S	12 RTX-SS	3/4	18, 20
16 RTX-S	16 RTX-SS	1	25
20 RTX-S	20 RTX-SS	1 1/4	28, 30, 32
24 RTX-S	24 RTX-SS	1 1/2	35, 38

**SMTX - Male stud branch tee - NPTF**



63 Parker DirectLok

Part number Steel	Stainless Steel	Tube Outside Diameter		Thread	
		inch	mm	UN/UNF-2A	NPT/NPTF
4 STX-S	4 STX-SS	1/4	6	7/16-20	1/8-27
4-4-4 STX-S	4-4-4 STX-SS	1/4	6	7/16-20	1/4-18
5 STX-S	-	5/16	8	1/2-20	1/8-27
-	6 STX-SS	3/8	10	9/16-18	1/4-16
6-6-6 STX-S	6-6-6 STX-SS	3/8	10	9/16-18	3/8-18
8 STX-S	8 STX-SS	1/2	12	3/4-16	3/8-18
8-8-8 STX-S	8-8-8 STX-SS	1/2	12	3/4-16	1/2-14
10 STX-S	10 STX-SS	5/8	14, 15, 16	7/8-14	1/2-14
12 STX-S	12 STX-SS	3/4	18, 20	1 1/16-12	3/4-14
16 STX-S	16 STX-SS	1	25	1 5/16-12	1-11 1/2
20 STX-S	20 STX-SS	1 1/4	28, 30, 32	1 5/8-12	1 1/4-11 1/2
-	24 STX-SS	2		1 7/8-12	1 1/2-11 1/2

**F3MX - Male stud connector - BSPT**



63 Parker DirectLok

Part number Steel	Tube Outside Diameter		Thread BSPT
	inch	mm	
4F3MXS	1/4	6	1/8-28
4-4F3MXS	1/4	6	1/4-19
5-4F3MXS	5/16	8	1/4-19
6F3MXS	3/8	10	1/4-19
6-6F3MXS	3/8	10	3/8-19
6-8F3MXS	3/8	10	1/2-14
8F3MXS	1/2	12	3/8-19
8-4F3MXS	1/2	12	1/4-19
8-8F3MXS	1/2	12	1/2-14
10F3MXS	5/8	14, 15, 16	1/2-14
12F3MXS	3/4	18, 20	3/4-14
16F3MXS	1	25	1-11

**1 C3MX - Male stud elbow - BSPT**



63 Parker Direct Link

Part number Steel	Tube Outside Diameter		Thread BSPT
	inch	mm	
4C3MXS	1/4	6	1/8-28
4-4C3MXS	1/4	6	1/4-19
6C3MXS	3/8	10	1/4-19
6-6C3MXS	3/8	10	3/8-19
8C3MXS	1/2	12	3/8-19
8-8C3MXS	1/2	12	1/2-14
10C3MXS	5/8	14, 15, 16	1/2-14

HYDRAULICS

**F40MX - Male stud connector - BSPP - O-Ring**



63 Parker Direct Link

Part number Steel	Tube Outside Diameter		Thread BSPP
	inch	mm	
4F40MXS	1/4	6	1/8-28
4-4F40MXS	1/4	6	1/4-19
4-6F40MXS	1/4	6	3/8-19
4-8F40MXS	1/4	6	1/2-14
5-4F40MXS	5/16	8	1/4-19
5-6F40MXS	5/16	8	3/8-19
6F40MXS	3/8	10	1/4-19
6-2F40MXS	3/8	10	1/8-28
6-6F40MXS	3/8	10	3/8-19
6-8F40MXS	3/8	10	1/2-14
8F40MXS	1/2	12	3/8-19
8-4F40MXS	1/2	12	1/4-19
8-8F40MXS	1/2	12	1/2-14
8-12F40MXS	1/2	12	3/4-14
10F40MXS	5/8	14, 15, 16	1/2-14
10-6F40MXS	5/8	14, 15, 16	3/8-19
10-12F40MXS	5/8	14, 15, 16	3/4-14
12F40MXS	3/4	18, 20	3/4-14
12-8F40MXS	3/4	18, 20	1/2-14
12-16F40MXS	3/4	18, 20	1-11
16F40MXS	1	25	1-11
16-12F40MXS	1	25	3/4-14
16-20F40MXS	1	25	1 1/4-11
20F40MXS	1 1/4	28, 30, 32	1 1/4-11
20-16F40MXS	1 1/4	28, 30, 32	1-11
20-24F40MXS	1 1/4	28, 30, 32	1 1/2-11
24F40MXS	1 1/2	35, 38	1 1/2-11
24-20F40MXS	1 1/2	35, 38	1 1/4-11

**F42EDMX - Male stud connector - BSPP - EOlastic seal**



63 Parker Direct Link

Part number	Steel	Stainless Steel	Tube Outside Diameter		Thread BSPP
			inch	mm	
4F42EDMXS		4F42EDMXSS	1/4	6	1/8-28
4-4F42EDMXS		4-4F42EDMXSS	1/4	6	1/4-19
4-6F42EDMXS		-	1/4	6	3/8-19
4-8F42EDMXS		-	1/4	6	1/2-14
5F42EDMXS		-	5/16	8	1/8-28
5-4F42EDMXS		-	5/16	8	1/4-19
5-6F42EDMXS		-	5/16	8	3/8-19
6F42EDMXS		6F42EDMXSS	3/8	10	1/4-19
6-2F42EDMXS		-	3/8	10	1/8-28
6-6F42EDMXS		6-6F42EDMXSS	3/8	10	3/8-19
6-8F42EDMXS		6-8F42EDMXSS	3/8	10	1/2-14
8F42EDMXS		8F42EDMXSS	1/2	12	3/8-19
8-4F42EDMXS		-	1/2	12	1/4-19
8-8F42EDMXS		8-8F42EDMXSS	1/2	12	1/2-14
8-12F42EDMXS		-	1/2	12	3/4-14
10F42EDMXS		10F42EDMXSS	5/8	14, 15, 16	1/2-14
10-6F42EDMXS		-	5/8	14, 15, 16	3/8-19
10-12F42EDMXS		-	5/8	14, 15, 16	3/4-14
10-16F42EDMXS		-	5/8	14, 15, 16	1-11
12F42EDMXS		12F42EDMXSS	3/4	18, 20	3/4-14
12-6F42EDMXS		-	3/4	18, 20	3/8-19
12-8F42EDMXS		12-8F42EDMXSS	3/4	18, 20	1/2-14
12-16F42EDMXS		12-16F42EDMXSS	3/4	18, 20	1-11
16F42EDMXS		16F42EDMXSS	1	25	1-11
16-12F42EDMXS		16-12F42EDMXSS	1	25	3/4-14
16-20F42EDMXS		-	1	25	1 1/4-11
20F42EDMXS		20F42EDMXSS	1 1/4	28, 30, 32	1 1/4-11
20-16F42EDMXS		-	1 1/4	28, 30, 32	1 1/2-11
20-24F42EDMXS		-	1 1/4	28, 30, 32	1 1/2-11
24F42EDMXS		-	1 1/2	35, 38	1 1/2-11
24-20F42EDMXS		-	1 1/2	35, 38	1 1/4-11

**1 C40MX - Male stud elbow - BSPP - O-Ring**

HYDRAULICS



63 Parker Direct Link

Part number	Steel	Stainless Steel	Tube Outside Diameter		Thread BSPP
			inch	mm	
4C40MXS	4C40MXSS		1/4	6	1/8-28
4-4C40MXS	-		1/4	6	1/4-19
5-4C40MXS	-		5/16	8	1/4-19
6C40MXS	6C40MXSS		3/8	10	1/4-19
6-6C40MXS	6-6C40MXSS		3/8	10	3/8-19
6-8C40MXS	-		3/8	10	1/2-14
8C40MXS	8C40MXSS		1/2	12	3/8-19
8-4C40MXS	-		1/2	12	1/4-19
8-8C40MXS	8-8C40MXSS		1/2	12	1/2-14
8-12C40MXS	8-12C40MXSS		1/2	12	3/4-14
10C40MXS	10C40MXSS		5/8	14, 15, 16	1/2-14
10-6C40MXS	-		5/8	14, 15, 16	3/8-19
10-12C40MXS	-		5/8	14, 15, 16	3/4-14
12C40MXS	12C40MXSS		3/4	18, 20	3/4-14
12-8C40MXS	12-8C40MXSS		3/4	18, 20	1/2-14
12-16C40MXS	-		3/4	18, 20	1-11
16C40MXS	16C40MXSS		1	25	1-11
16-12C40MXS	16-12C40MXSS		1	25	3/4-14
20C40MXS	20C40MXSS		1 1/4	28, 30, 32	1 1/4-11
20-16C40MXS	-		1 1/4	28, 30, 32	1.11
24C40MXS	24C40MXSS		1 1/2	35, 38	1 1/2-11

**V40MX - 45° male stud elbow - BSPP - O-Ring**



63 Parker Direct Link

Part number	Steel	Tube Outside Diameter		Thread BSPP
		inch	mm	
4V40MXS		1/4	6	1/8-28
6V40MXS		3/8	10	1/4-19
6-6V40MXS		3/8	10	3/8-19
6-8V40MXS		3/8	10	1/2-14
8V40MXS		1/2	12	3/8-19
8-8V40MXS		1/2	12	1/2-14
10V40MXS		5/8	14, 15, 16	1/2-14
12V40MXS		3/4	18, 20	3/4-14
16V40MXS		1	25	1-11
20V40MXS		1 1/4	28, 30, 32	1 1/4-11
24V40MXS		1 1/2	35, 38	1 1/2-11

**R40MX - Male stud run tee - BSPP - O-Ring**



63 Parker Direct Link

Part number Steel	Tube Outside Diameter		Thread BSPP
	inch	mm	
4R40MXS	1/4	6	1/8-28
6R40MXS	3/8	10	1/4-19
8R40MXS	1/2	12	3/8-19
10R40MXS	5/8	14, 15, 16	1/2-14
12R40MXS	3/4	18, 20	3/4-14
16R40MXS	1	25	1-11
20R40MXS	1 1/4	28, 30, 32	1 1/4-11

**S40MX - Male stud branch tee - BSPP - O-Ring**



63 Parker Direct Link

Part number Steel	Tube Outside Diameter		Thread BSPP
	inch	mm	
4S40MXS	1/4	6	1/8-28
6S40MXS	3/8	10	1/4-19
8S40MXS	1/2	12	3/8-19
10S40MXS	5/8	14, 15, 16	1/2-14
12S40MXS	3/4	18, 20	3/4-14
16S40MXS	1	25	1-11
20S40MXS	1 1/4	28, 30, 32	1 1/4-11

**1** F50MX - Male stud connector - UNF - O-Ring



63 Parker  
PowerLok

HYDRAULICS

Part number Steel	Tube Outside Diameter		Thread UNF
	inch	mm	
4F50MXS	1/4	6	7/16-20
4-6F50MXS	1/4	6	9/16-18
5F50MXS	5/16	8	1/2-20
5-6 F50X-S	5/16	8	9/16-18
6F50MXS	3/8	10	9/16-18
6-4 F50X-S	3/8	10	7/16-20
6-5 F50X-S	3/8	10	1/2-20
6-8F50MXS	3/8	10	3/4-16
8F50MXS	1/2	12	3/4-16
8-6F50MXS	1/2	12	9/16-18
8-10F50MXS	1/2	12	7/8-14
8-12F50MXS	1/2	12	1 1/16-12
10F50MXS	5/8	14, 15, 16	7/8-14
10-8F50MXS	5/8	14, 15, 16	3/4-16
10-12F50MXS	5/8	14, 15, 16	1 1/16-12
12F50MXS	3/4	18, 20	1 1/16-12
12-10F50MXS	3/4	18, 20	7/8-14
12-16F50MXS	3/4	18, 20	1 5/16-12
16F50MXS	1	25	1 5/16-12
16-12F50MXS	1	25	1 1/16-12
20F50MXS	1 1/4	28, 30, 32	1 5/8-12

**C50MX - Male stud elbow - UNF - O-Ring**



63 Parker Direct Link

Part number Steel	Tube Outside Diameter		Thread UNF
	inch	mm	
4C50MXS	1/4	6	7/16-20
4-6 C50X-S	1/4	6	9/16-18
5C50MXS	5/16	8	1/2-20
5-4 C50X-S	5/16	8	7/16-18
5-6 C50X-S	5/16	8	9/16-18
6C50MXS	3/8	10	9/16-18
6-4 C50X-S	3/8	10	7/16-20
6-5 C50X-S	3/8	10	1/2-20
6-10 C50X-S	3/8	10	7/8-14
8C50MXS	1/2	12	3/4-16
8-4 C50X-S	1/2	12	7/16-18
8-6 C50X-S	1/2	12	9/16-18
8-10C50MXS	1/2	12	7/8-14
8-16 C50X-S	1/2	12	1 5/16-12
10C50MXS	5/8	14, 15, 16	7/8-14
10-8 C50X-S	5/8	14, 15, 16	3/4-16
10-12 C50X-S	5/8	14, 15, 16	1 1/16-12
10-16 C50X-S	5/8	14, 15, 16	1 5/16-12
12C50MXS	3/4	18, 20	1 1/16-12
12-8 C50X-S	3/4	18, 20	3/4-16
12-10C50MXS	3/4	18, 20	7/8-14
12-16 C50X-S	3/4	18, 20	1 5/16-12
16C50MXS	1	25	1 5/16-12
16-12 C50X-S	1	25	1 1/16-12
16-20 C50X-S	1	25	1 5/8-12
20 C50X-S	1 1/4	28, 30, 32	1 5/8-12
20-16 C50X-S	1 1/4	28, 30, 32	1 5/16-12
20-24 C50X-S	1 1/4	28, 30, 32	1 7/8-12
24 C50X-S	1 1/2	35, 38	1 7/8-12
24-20 C50X-S	1 1/2	35, 38	1 5/8-12

**V50MX - 45° male stud elbow - UNF - O-Ring**



63 Parker Direct Link

Part number Steel	Tube Outside Diameter		Thread UNF
	inch	mm	
4 V50X-S	1/4	6	7/16-20
5 V50X-S	5/16	8	1/2-20
6 V50X-S	3/8	10	9/16-18
6-8 V50X-S	3/8	10	3/4-16
8 V50X-S	1/2	12	3/4-16
8-6 V50X-S	1/2	12	9/16-18
8-10 V50X-S	1/2	12	7/8-14
12 V50X-S	3/4	18, 20	1 1/16-12
12-10 V50X-S	3/4	18, 20	7/8-14
14 V50X-S	7/8	22	1 3/16-12
16 V50X-S	1	25	1 5/16-12
20 V50X-S	1 1/4	28, 30, 32	1 5/8-12
24 V50X-S	1 1/2	35, 38	1 7/8-12



**1 R50MX - Male stud run tee - UNF - O-Ring**



63 Parker  
DirectLink

Part number Steel	Tube Outside Diameter		Thread UNF
	inch	mm	
4 R50X-S	1/4	6	7/16-20
5 R50X-S	5/16	8	1/2-20
8R50MXS	1/2	12	3/4-16
10 R50X-S	5/8	14, 15, 16	7/8-14
12 R50X-S	3/4	18, 20	1 1/16-12
16 R50X-S	1	25	1 5/16-12
20 R50X-S	1 1/4	28, 30, 32	1 5/8-12
24 R50X-S	1 1/2	35, 38	1 7/8-12

HYDRAULICS

**S50MX - Male stud branch tee - UNF - O-Ring**



63 Parker  
DirectLink

Part number Steel	Tube Outside Diameter		Thread UNF
	inch	mm	
4S50MXS	1/4	6	7/16-20
5 S50X-S	5/16	8	1/2-20
6S50MXS	3/8	10	9/16-18
8S50MXS	1/2	12	3/4-16
10S50MXS	5/8	14, 15, 16	7/8-14
12 S50X-S	3/4	18, 20	1 1/16-12
16 S50X-S	1	25	1 5/16-12
24 S50X-S	1 1/2	35, 38	1 7/8-12

**F870MX - Male stud connector - Metric - O-Ring - ISO 6149**



63 Parker  
DirectLink

Part number Steel	Tube Outside Diameter		Thread Metric
	inch	mm	
4M10F870MXS	1/4	6	M10x1
5M12F870MXS	5/16	8	M12x1.5
6M14F870MXS	3/8	10	M14x1.5
6M16F870MXS	3/8	10	M16x1.5
8M14F870MXS	1/2	12	M14x1.5
8M16F870MXS	1/2	12	M16x1.5
8M18F870MXS	1/2	12	M18x1.5
10M18F870MXS	5/8	14, 15, 16	M18x1.5
10M22F870MXS	5/8	14, 15, 16	M22x1.5
12M22F870MXS	3/4	18, 20	M22x1.5
16M27F870MXS	1	25	M27x2
16M33F870MXS	1	25	M33x2

**C870MX - Male stud elbow - Metric - O-Ring - ISO 6149**



63 Parker Direct Link

Part number Steel	Tube Outside Diameter		Thread Metric
	inch	mm	
4M12C870MXS	1/4	6	M12x1.5
5M12C870MXS	5/16	8	M12x1.5
6M14C870MXS	3/8	10	M14x1.5
6M16C870MXS	3/8	10	M16x1.5
8M16C870MXS	1/2	10	M16x1.5
8M18C870MXS	1/2	12	M18x1.5
10M18C870MXS	5/8	14, 15, 16	M18x1.5
10M22C870MXS	5/8	14, 15, 16	M22x1.5
12M22C870MXS	3/4	18, 20	M22x1.5
16M27C870MXS	1	25	M27x2
20M42C870MXS	1 1/4	28, 30, 32	M42x2

**F80MX - Male stud connector - Metric - O-Ring**



63 Parker Direct Link

Part number Steel	Tube Outside Diameter		Thread Metric
	inch	mm	
4M10F80MXS	1/4	6	M10x1
5M12F80MXS	5/16	8	M12x1.5
6M14F80MXS	3/8	10	M14x1.5
6M16F80MXS	3/8	10	M16x1.5
8M16F80MXS	1/2	12	M16x1.5
8M18F80MXS	1/2	12	M18x1.5
8M22F80MXS	1/2	12	M22x1.5
10M18F80MXS	5/8	14, 15, 16	M18x1.5
10M22F80MXS	5/8	14, 15, 16	M22x1.5
12M22F80MXS	3/4	18, 20	M22x1.5
12M27F80MXS	3/4	18, 20	M27x2
16M33F80MXS	1	25	M33x2
20M42F80MXS	1 1/4	28, 30, 32	M42x2

1 F82EDMX - Male stud connector - Metric - E0lastic seal



63 Parker Direct Link

Part number Steel	Tube Outside Diameter		Thread Metric
	inch	mm	
4M10F82EDMXS	1/4	6	M10x1
5M12F82EDMXS	5/16	8	M12x1.5
6M12F82EDMXS	3/8	10	M12x1.5
6M14F82EDMXS	3/8	10	M14x1.5
6M16F82EDMXS	3/8	10	M16x1.5
6M18F82EDMXS	3/8	10	M18x1.5
8M14F82EDMXS	1/2	12	M14x1.5
8M16F82EDMXS	1/2	12	M16x1.5
8M18F82EDMXS	1/2	12	M18x1.5
10M18F82EDMXS	5/8	14, 15, 16	M18x1.5
10M22F82EDMXS	5/8	14, 15, 16	M22x1.5
12M18F82EDMXS	3/4	18, 20	M18x1.5
12M22F82EDMXS	3/4	18, 20	M22x1.5
16M33F82EDMXS	25	1	M33x2
20M42F82EDMXS	1 1/4	28, 30, 32	M42x2
24M48F82EDMXS	1 1/2	35, 38	M48x2

C80MX - Male stud elbow - Metric - O-Ring



63 Parker Direct Link

Part number Steel	Tube Outside Diameter		Thread Metric
	inch	mm	
4M10C80MXS	1/4	6	M10x1
5M12C80MXS	5/16	8	M12x1.5
6M14C80MXS	3/8	10	M14x1.5
6M16C80MXS	3/8	10	M16x1.5
8M16C80MXS	1/2	12	M16x1.5
8M18C80MXS	1/2	12	M18x1.5
10M18C80MXS	5/8	14, 15, 16	M18x1.5
10M20C80MXS	5/8	14, 15, 16	M20x1.5
10M22C80MXS	5/8	14, 15, 16	M22x1.5
12M22C80MXS	3/4	18, 20	M22x1.5
12M27C80MXS	3/4	18, 20	M27x2
16M33C80MXS	1	25	M33x2
20M42C80MXS	1 1/4	28, 30, 32	M42x2
24M48C80MXS	1 1/2	35, 38	M48x2

HYDRAULICS

**GMTX - Female connector**



63 Parker Direct Link

Part number Steel	Tube Outside Diameter	
	inch	mm
4 GTX-S	1/4	6
5 GTX-S	5/16	8
5-4 GTX-S	5/16	8
6-6 GTX-S	3/8	10
8 GTX-S	1/2	12
8-4 GTX-S	1/2	12
8-8 GTX-S	1/2	12
8-12 GTX-S	1/2	12
10 GTX-S	5/8	14, 15, 16
10-12 GTX-S	5/8	14, 15, 16
12 GTX-S	3/4	18, 20
12-8 GTX-S	3/4	18, 20
16 GTX-S	1	25
20 GTX-S	1 1/4	28, 30, 32
24 GTX-S	1 1/2	35, 38
32 GTX-S	2	

**DMTX - Female elbow connector**



63 Parker Direct Link

Part number Steel	Tube Outside Diameter	
	inch	mm
4 DTX-S	1/4	6
4-4 DTX-S	1/4	6
5 DTX-S	5/16	8
5-4 DTX-S	5/16	8
6 DTX-S	3/8	10
6-2 DTX-S	3/8	10
6-6 DTX-S	3/8	10
8 DTX-S	1/2	12
8-4 DTX-S	1/2	12
10 DTX-S	5/8	14, 15, 16
12-8 DTX-S	3/4	18, 20
16 DTX-S	1	25
20 DTX-S	1 1/4	28, 30, 32
24 DTX-S	1 1/2	35, 38

**OTX - Female branch tee**



63 Parker Direct Link

Part number Steel	Tube Outside Diameter	
	inch	mm
4 OTX-S	1/4	6
5 OTX-S	5/16	8
6 OTX-S	3/8	10
8 OTX-S	1/2	12
10 OTX-S	5/8	14, 15, 16
12 OTX-S	3/4	18, 20
16 OTX-S	1	25
20 OTX-S	1 1/4	28, 30, 32
24 OTX-S	1 1/2	35, 38

1 MTX - Female run tee



63 Parker Direct Link

Part number Steel	Tube Outside Diameter		Thread	
	inch	mm	UN/UNF-2A	NPT/NPTF
4 MTX-S	1/4	6	7/16-20	1/8-27
6 MTX-S	3/8	10	9/16-18	1/4-18
8 MTX-S	1/2	12	3/4-16	3/8-18
10 MTX-S	5/8	14, 15, 16	7/8-14	1/2-14
12 MTX-S	3/4	18, 20	1 1/16-12	3/4-14
16 MTX-S	1	25	1 5/16-12	1-11 1/2
20 MTX-S	1 1/4	28, 30, 32	1 5/8-12	1 1/4-11 1/2

G6X - Swivel connector female



63 Parker Direct Link

Part number Steel	Stainless Steel	Tube Outside Diameter		Thread	
		inch	mm	UN/UNF-2B	NPT/NPTF
4 G6X-S	4 G6X-SS	1/4	6	7/16-20	1/8-27
4-4 G6X-S	4-4 G6X-SS	1/4	6	7/16-20	1/4-18
6 G6X-S	6 G6X-SS	3/8	10	9/16-18	1/4-18
6-6 G6X-S	6-6 G6X-SS	3/8	10	9/16-18	3/8-18
8 G6X-S	8 G6X-SS	1/2	12	3/4-16	3/8-18
8-8 G6X-S	8-8 G6X-SS	1/2	12	3/4-16	1/2-14
10 G6X-S	10 G6X-SS	5/8	14, 15, 16	7/8-14	1/2-14
12 G6X-S	12 G6X-SS	3/4	18, 20	1 1/16-12	3/4-14
16 G6X-S	16 G6X-SS	1	25	1 5/16-12	1-11 1/2
20 G6X-S	20 G6X-SS	1 1/4	28, 30, 32	1 5/8-12	1 1/4-11 1/2
24 G6X-S	24 G6X-SS	1 1/2	35, 38	1 7/8-12	1 1/2-12 1/2

G4MX - Female connector - BSPP



63 Parker Direct Link

Part number Steel	Tube Outside Diameter		Thread
	inch	mm	BSPP
4G4MXS	1/4	6	1/8-28
4-4G4MXS	1/4	6	1/4-19
6G4MXS	3/8	10	1/4-19
6-6G4MXS	3/8	10	3/8-19
8G4MXS	1/2	12	3/8-19
8-8G4MXS	1/2	12	1/2-14
10G4MXS	5/8	14, 15, 16	1/2-14
12G4MXS	3/4	18, 20	3/4-14
16G4MXS	1	25	1-11
20G4MXS	1 1/4	28, 30, 32	1 1/4-11
24G4MXS	1 1/2	35, 38	1 1/2-11



**G4MXMO - Pressure gauge connector female - BSPP**



63 Parker Direct Line

Part number Steel	Tube Outside Diameter		Thread BSPP
	inch	mm	
4-4G4MXSMO	1/4	6	1/4-19
5-4G4MXSMO	5/16	8	1/4-19
6G4MXSMO	3/8	10	1/4-19

**TT4MX - Test point connection female - BSPP**



63 Parker Direct Line

Part number Steel	Tube Outside Diameter		Thread	
	inch	mm	BSPP	UN/UNF-2B
4TT4MXS	1/4	6	1/4-19	7/16-20
5TT4MXS	5/16	8	1/4-19	1/2-20
6TT4MXS	3/8	10	1/4-19	9/16-18
8TT4MXS	1/2	12	1/4-19	3/4-16
10TT4MXS	5/8	14, 15, 16	1/4-19	7/8-14
12TT4XS	3/4	18, 20	1/4-19	1 1/16-12
16TT4XS	1	25	1/4-19	1 5/16-12
20TT4XS	1 1/4	28, 30, 32	1/4-19	1 5/8-12
24TT4XS	1 1/2	35, 38	1/4-19	1 7/8-12

**1 F6MX - Swivel male stud**



63 Parker Direct Link

Part number Steel	Tube Outside Diameter	
	inch	mm
4 F6X-S	1/4	6
4-4 F6X-S	1/4	6
5-4 F6X-S	8	5/16
6 F6X-S	3/8	10
8 F6X-S	1/2	12
10 F6X-S	5/8	14, 15, 16
12 F6X-S	3/4	18, 20
12-8 F6X-S	3/4	18, 20
16 F6X-S	1	25
16-12 F6X-S	1	25
20 F6X-S	1 1/4	28, 30, 32
24 F6X-S	1 1/2	35, 38

**F640MX - Swivel male stud - BSPP - O-Ring**



63 Parker Direct Link

Part number Steel	Tube Outside Diameter		Thread BSPP
	inch	mm	
4F640MXS	1/4	6	1/8-28
6F640MXS	3/8	10	1/4-19
6-6F640MXS	3/8	10	3/8-19
8F640MXS	1/2	12	3/8-19
8-4F640MXS	1/2	12	1/4-19
8-8F640MXS	1/2	12	1/2-14
10F640MXS	5/8	14, 15, 16	1/2-14
12F640MXS	3/4	18, 20	3/4-14
16F640MXS	1	25	1-11
20F640MXS	1 1/4	28, 30, 32	1 1/4-11
24F640MXS	1 1/2	35, 38	1 1/2-11

**F642EDMX - Swivel male stud - BSPP - E0lastic seal**



63 Parker Direct Link

Part number Steel	Tube Outside Diameter		Thread BSPP
	inch	mm	
4F642EDMXS	1/4	6	1/8-28
4-4F642EDMXS	1/4	6	1/4-19
5-4F642EDMXS	5/16	8	1/4-19
6F642EDMXS	3/8	10	1/4-19
6-6F642EDMXS	3/8	10	3/8-19
8F642EDMXS	1/2	12	3/8-19
8-4F642EDMXS	1/2	12	1/4-19
8-8F642EDMXS	1/2	12	1/2-14
10F642EDMXS	5/8	14, 15, 16	1/2-14
10-6F642EDMXS	5/8	14, 15, 16	3/8-19
12F642EDMXS	3/4	18, 20	3/4-14
12-8F642EDMXS	3/4	18, 20	1/2-14
16F642EDMXS	1	25	1-11
16-12F642EDMXS	1	25	3/4-14
20F642EDMXS	1 1/4	28, 30, 33	1 1/4-11
24F642EDMXS	1 1/2	35, 38	1 1/2-11

HYDRAULICS

**F650MX - Swivel male stud - UNF**



63 Parker Direct Link

Part number Steel	Tube Outside Diameter		Thread UNF
	inch	mm	
4F650MXS	1/4	6	7/16-20
6F650MXS	3/8	10	9/16-18
8 F650X-S	1/2	12	3/4-16
10 F650X-S	5/8	14, 15, 16	7/8-14
12F650MXS	3/4	18, 20	1 1/16-12
16F650MXS	1	25	1 5/16-12
20 F650X-S	1 1/4	28, 30, 32	1 5/8-12

**F6870MX - Swivel male stud - Metric - ISO 6149**



63 Parker Direct Link

Part number Steel	Tube Outside Diameter		Thread Metric
	inch	mm	
4M10F6870MXS	1/4	6	M10x1
6M16F6870MXS	3/8	10	M16x1.5
8M18F6870MXS	1/2	12	M18x1.5
12M27F6870MXS	3/4	18, 20	M27x2
16M33F6870MXS	1	25	M33x2
20M42F6870MXS	1 1/4	28, 30, 32	M42x2

**C6MX - Swivel nut elbow**



63 Parker Direct Link

Part number Steel	Stainless Steel	Tube Outside Diameter	
		inch	mm
4C6MXS	4C6MXSS	1/4	6
5C6MXS	-	5/16	8
6C6MXS	6C6MXSS	3/8	10
8C6MXS	8C6MXSS	1/2	12
10C6MXS	10C6MXSS	5/8	14, 15, 16
12C6MXS	12C6MXSS	3/4	18, 20
16C6MXS	16C6MXSS	1	25
20 C6X-S	20C6MXSS	1 1/4	28, 30, 32
24 C6X-S	24C6MXSS	1 1/2	35, 38
32 C6X-S	-	2	



**1** V6MX - 45° swivel nut elbow

HYDRAULICS



63 Parker Direct Link

Part number	Steel	Stainless Steel	Tube Outside Diameter	
			inch	mm
4 V6X-S		4 V6X-SS	1/4	6
5 V6X-S		-	5/16	8
6 V6X-S		6 V6X-SS	3/8	10
8V6MXS		-	1/2	12
10 V6X-S		10 V6X-SS	5/8	14, 15, 16
12 V6X-S		12 V6X-SS	3/4	18, 20
16 V6X-S		16 V6X-SS	1	25
20 V6X-S		20 V6X-SS	1 1/4	28, 30, 32
24 V6X-S		24 V6X-SS	1 1/2	35, 38

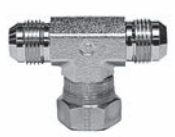
R6MX - Swivel nut run tee



63 Parker Direct Link

Part number	Steel	Tube Outside Diameter	
		inch	mm
4 R6X-S		1/4	6
5R6MXS		5/16	8
6R6MXS		3/8	10
8R6MXS		1/2	12
10R6MXS		5/8	14, 15, 16
12R6MXS		3/4	18, 20
16R6MXS		1	25
20R6MXS		1 1/4	28, 30, 32
24 R6X-S		1 1/2	35, 38

S6MX - Swivel nut branch tee



63 Parker Direct Link

Part number	Steel	Tube Outside Diameter	
		inch	mm
4 S6X-S		1/4	6
5S6MXS		5/16	8
6S6MXS		3/8	10
8S6MXS		1/2	12
10S6MXS		5/8	14, 15, 16
12S6MXS		3/4	18, 20
16S6MXS		1	25
20 S6X-S		1 1/4	28, 30, 32
24 S6X-S		1 1/2	35, 38

**BMTX - Metric nut**



63 Parker Direct Link

Part number		Tube Outside Diameter		Thread
Steel	Stainless Steel	inch	mm	UN/UNF-2B
4BMTXS	4BMTXSS	1/4	6	7/16-20
5BMTXS	5BMTXSS	5/16	8	1/2-20
6BMTXS	6BMTXSS	10	3/8	9/16-18
8BMTXS	8BMTXSS	1/2	12	3/4-16
10BMTXS	10BMTXSS	5/8	14, 15, 16	7/8-14
12BMTXS	12BMTXSS	3/4	18, 20	1 1/16-12
16BMTXS	16BMTXSS	1	25	1 5/16-12
20BMTXS	20BMTXSS	1 1/4	28, 30, 32	1 5/8-12
24BMTXS	24BMTXSS	1 1/2	35, 38	1 7/8-12

**TX - Sleeve**



63 Parker Direct Link

Part number		Tube Outside Diameter
Steel	Stainless Steel	mm
TXS6	TXSS6	6
TXS8	TXSS8	8
TXS10	TXSS10	10
TXS12	TXSS12	12
TXS15	-	15
TXS16	TXSS16	16
TXS18	-	18
TXS20	TXSS20	20
TXS25	TXSS25	25
TXS28	-	28
TXS30	TXSS30	30
TXS32	-	32
TXS35	-	35
TXS38	TXSS38	38

**1** TRMTX - Tube end reducer



63 Parker  
PowerLok

Part number	Outside Diameter			
	Tube 1	Tube 2	Tube 1	Tube 2
Steel	inch	inch	mm	mm
6-4TRTXS	3/8	1/4	10	6
8-4TRTXS	1/2	1/4	12	6
8-5TRTXS	1/2	5/16	12	8
8-6TRTXS	1/2	3/8	12	10
10-4 TRTX-S	5/8	1/4	14, 15, 16	6
10-6TRTXS	5/8	3/8	14, 15, 16	10
10-8TRMTXS	5/8	1/2	14, 15, 16	12
12-4 TRTX-S	3/4	1/4	18, 20	6
12-6TRTXS	3/4	3/8	18, 20	10
12-8TRTXS	3/4	1/2	18, 20	12
12-10TRMTXS	3/4	5/8	18, 20	14, 15, 16
16-6TRTXS	1	3/8	25	10
16-10TRTXS	1	5/8	25	14, 15, 16
16-12TRTXS	1	3/4	25	18, 20
20-12 TRTX-S	1 1/4	3/4	28, 30, 32	18, 20
20-16TRTXS	1 1/4	1	28, 30, 32	25
24-16TRTXS	1 1/2	1	35, 38	25
24-20 TRTX-S	1 1/2	1 1/4	35, 38	28, 30, 32

Form A Fixed Female Style.  
For Form B, a BTX- or BTMX- nut is required (to be ordered separately).

HYDRAULICS

**FNMTX - Cap**



63 Parker Direct Link

Part number Steel	Tube Outside Diameter	
	inch	mm
4FNMTXS	1/4	6
5FNMTXS	5/16	8
6FNMTXS	3/8	10
8FNMTXS	1/2	12
10FNMTXS	5/8	14, 15, 16
12FNMTXS	3/4	18, 20
16FNMTXS	1	25
20FNMTXS	1 1/4	28, 30, 32
24FNMTXS	1 1/2	35, 38

**PNMTX - Plug**



63 Parker Direct Link

Part number Steel	Tube Outside Diameter	
	inch	mm
4PNMTXS	1/4	6
6PNMTXS	3/8	10
8PNMTXS	1/2	12
10PNMTXS	5/8	14, 15, 16
12PNMTXS	3/4	18, 20
16 PNTX-S	1	25
20 PNTX-S	1 1/4	28, 30, 32
24 PNTX-S	1 1/2	35, 38

**XHLO - Conversion union Triple-Lok® to O-Lok®**



63 Parker Direct Link

Part number Steel	Tube Outside Diameter		Thread UN/UNF-2A	
	inch	mm	JIC	ORFS
4 XHLO-S	1/4	6	7/16-20	9/16-18
6 XHLO-S	5/16, 3/8	8, 10	9/16-18	11/16-16
8 XHLO-S	1/2	12	3/4-16	13/16-16
10 XHLO-S	5/8	14, 15, 16	7/8-14	1-14
12 XHLO-S	3/4	18, 20	1 1/16-12	1 3/16-12
16 XHLO-S	1	22, 25	1 5/16-12	1 7/16-12
20 XHLO-S	1 1/4	28, 30, 32	1 5/8-12	1 11/16-12
24 XHLO-S	1 1/2	35, 38	1 7/8-12	2-12

**1 XHL6 - Conversion swivel nut connector Triple-Lok® to O-Lok®**



63 Parker Direct Link

Part number Steel	Tube Outside Diameter		Thread UN/UNF-2A	
	inch	mm	JIC	ORFS
4 XHL6-S	1/4	6	7/16-20	9/16-18
6 XHL6-S	5/16, 3/8	8, 10	9/16-18	11/16-16
8 XHL6-S	1/2	12	3/4-16	13/16-16
10 XHL6-S	5/8	14, 15, 16	7/8-14	1-14
12 XHL6-S	3/4	18, 20	1 1/16-12	1 3/16-12
16 XHL6-S	1	22, 25	1 5/16-12	1 7/16-12
20 XHL6-S	1 1/4	28, 30, 32	1 5/8-12	1 11/16-12

HYDRAULICS

**LOHX6 - Conversion swivel nut connector Triple-Lok® to O-Lok®**



63 Parker Direct Link

Part number Steel	Tube Outside Diameter		Thread UN/UNF-2A	
	inch	mm	JIC	ORFS
4 LOHX6-S	1/4	6	7/16-20	9/16-18
6 LOHX6-S	5/16, 3/8	8, 10	9/16-18	11/16-16
8 LOHX6-S	1/2	12	3/4-16	13/16-16
10 LOHX6-S	5/8	14, 15, 16	7/8-14	1-14
12 LOHX6-S	3/4	18, 20	1 1/16-12	1 3/16-12
16 LOHX6-S	1	22, 25	1 5/16-12	1 7/16-12

**O-Ring - NBR**



63 Parker Direct Link

Part number	Thread BSPP
6-002-N552-9	1/8
2-111-N552-9	1/4
2-113-N552-9	3/8
5-256-N552-9	1/2
2-119-N552-9	3/4
2-217-N552-9	1
2-222-N552-9	1 1/4
2-224-N552-9	1 1/2

- Description:**
- The orbital tube forming process flanges hydraulic tube in a progressive action, resulting in a 90° flange with a superior surface finish on the sealing area.
  - The Parflange® process is faster, more flexible, more cost effective, and more environmentally safe than brazing alternatives.
  - The Parflange® / O-Lok® fitting combination is approved by major OEMs worldwide, and is part of Parker's Dry Technology leak-free programme.
- Material:**
- Steel, Stainless Steel.
- Product range:**
- Tube outside diameter 6 to 50 mm.
  - Tube outside diameter 1/4" to 2".
- Nominal pressure PN:**
- Size 6 : up to 630 bar.
  - Size 8 : up to 630 bar.
  - Size 20 : up to 420 bar.
  - Size 24 : up to 350 bar.
  - Size 32 : up to 210 bar.

- Advantages:**
- The O-Lok® system provides leak-free, "fit and forget" performance due to the elastomeric sealing design.
  - Pressure ratings up to 630 bar.
  - Available in steel, stainless steel and brass (on request).
  - The Parflange® tube preparation system flanges the tube end to 90 degrees.
  - Available in sizes to suit from 6 mm to 38 mm or hose sizes -4 to -24.
  - Thanks to no component deformation or tube forming during the final assembly, the O-Lok® fitting is exceptionally easy to assemble.
  - No tube entry.
  - Available as standard in over forty basic body styles.
  - Conform to the relevant international standards (SAE J1453 and ISO 8434-3).
- Benefits:**
- No more leaks.
  - Longer life service.
  - Give a high quality seal face against the O-Ring seal of the fitting. Metric nut.
  - Requiring lower assembly torque than comparable fittings of similar operating pressure.
  - Short assembly tightening angle means much easier assembly in areas with poor access or little space.
  - Due to the design, quality checking prior to final assembly is simple and therefore reliable.
  - During maintenance, easier disassembly of hydraulic components without completely stripping the line.
  - Worldwide availability.

**HMLO - Union**



63 Parker PowerLine

Part number	Outside Diameter			
	Tube 1 inch	Tube 2 inch	Tube 1 mm	Tube 2 mm
<b>4 HLO-S</b>	1/4	1/4	6	6
<b>6HMLOS</b>	5/16, 3/8	5/16, 3/8	8, 10	8, 10
<b>8HMLOS</b>	1/2	1/2	12	12
<b>10HMLOS</b>	5/8	5/8	14, 15, 16	14, 15, 16
<b>12HMLOS</b>	3/4	3/4	18, 20	18, 20
<b>16HMLOS</b>	1	1	22, 25	22, 25
<b>20 HLO-S</b>	1 1/4	1 1/4	28, 30, 32	28, 30, 32
<b>24 HLO-S</b>	1 1/2	1 1/2	35, 38	35, 38

# 1 ELO - Union elbow



63 Parker Direct Link

Part number Steel	Tube Outside Diameter	
	inch	mm
4 ELO-S	1/4	6
6 ELO-S	5/16, 3/8	8, 10
8 ELO-S	1/2	12
10 ELO-S	5/8	14, 15, 16
12 ELO-S	3/4	18, 20
16 ELO-S	1	22, 25
20 ELO-S	1 1/4	28, 30, 32
24 ELO-S	1 1/2	35, 38

# JMLO - Union tee



63 Parker Direct Link

Part number Steel	Tube Outside Diameter	
	inch	mm
4JMLOS	1/4	6
6 JLO-S	5/16, 3/8	8, 10
8JMLOS	1/2	12
10 JLO-S	5/8	14, 15, 16
12 JLO-S	3/4	18, 20
16 JLO-S	1	22, 25
20 JLO-S	1 1/4	28, 30, 32
24 JLO-S	1 1/2	35, 38

# KLO - Union cross



63 Parker Direct Link

Part number Steel	Tube Outside Diameter	
	inch	mm
4 KLO-S	1/4	6
6 KLO-S	5/16, 3/8	8, 10
8 KLO-S	1/2	12
10 KLO-S	5/8	14, 15, 16
12 KLO-S	3/4	18, 20
16 KLO-S	1	22, 25
20 KLO-S	1 1/4	28, 30, 32

# WMLO - Bulkhead union



63 Parker Direct Link

Part number Steel	Tube Outside Diameter	
	inch	mm
4 WLO-WLNL-S	1/4	6
6WMLOWLNMLS	5/16, 3/8	8, 10
8WMLOWLNMLS	1/2	12
10WMLOWLNMLS	5/8	14, 15, 16
12WMLOWLNMLS	3/4	18, 20
16WMLOWLNMLS	1	22, 25
20 WLO-WLNL-S	1 1/4	28, 30, 32
24 WLO-WLNL-S	1 1/2	35, 38

HYDRAULICS

**WLNML - Bulkhead locknut**



63 Parker Direct Link

Part number Steel	Thread UN/UNF-2B
4WLNMLS	9/16-18
6WLNMLS	11/16-16
8WLNMLS	13/16-16
10WLNMLS	1-14
12WLNMLS	1 3/16-12
16WLNMLS	1 7/16-12
20 WLNL-S	1 11/16-12
24 WLNL-S	2-12

**F50MLO - Male stud connector - UNF - O-Ring**



63 Parker Direct Link

Part number Steel	Tube Outside Diameter		Thread UNF
	inch	mm	
4F50MLOS	1/4	6	7/16-20
4-5 F50LO-S	1/4	6	1/2-20
4-6F50MLOS	1/4	6	9/16-18
4-8 F50LO-S	1/4	6	3/4-16
6F50MLOS	5/16, 3/8	8, 10	9/16-18
6-4F50MLOS	5/16, 3/8	8, 10	7/16-20
6-5 F50LO-S	5/16, 3/8	8, 10	1/2-20
6-8F50MLOS	5/16, 3/8	8, 10	3/4-16
6-10F50MLOS	5/16, 3/8	8, 10	7/8-14
8F50MLOS	1/2	10	3/4-16
8-6F50MLOS	1/2	12	9/16-18
8-10F50MLOS	1/2	12	7/8-14
8-12F50MLOS	1/2	12	1 1/16-12
10F50MLOS	5/8	14, 15, 16	7/8-14
10-8F50MLOS	5/8	14, 15, 16	3/4-16
10-12F50MLOS	5/8	14, 15, 16	1 1/16-12
12F50MLOS	3/4	18, 20	1 1/16-12
12-8 F50LO-S	3/4	18, 20	3/4-16
12-10F50MLOS	3/4	18, 20	7/8-14
12-16F50MLOS	3/4	18, 20	1 5/16-12
16 F50LO-S	1	22, 25	1 5/16-12
16-12 F50LO-S	1	22, 25	1 1/16-12
16-20 F50LO-S	1	22, 25	1 5/8-12
20F50MLOS	1 1/4	28, 30, 32	1 5/8-12
20-16 F50LO-S	1 1/4	28, 30, 32	1 5/16-12
20-24 F50LO-S	1 1/4	28, 30, 32	1 7/8-12
24 F50LO-S	1 1/2	35, 38	1 7/8-12
24-20 F50LO-S	1 1/2	35, 38	1 5/8-12



# 1 C50MLO - Male stud elbow - UNF - O-Ring



63 Parker DirectLink

Part number Steel	Tube Outside Diameter		Thread UNF
	inch	mm	
4 C50LO-S	1/4	6	7/16-20
4-6C50MLOS	1/4	6	9/16-18
6C50MLOS	5/16, 3/8	8, 10	9/16-18
6-4 C50LO-S	5/16, 3/8	8, 10	7/16-20
6-8C50MLOS	5/16, 3/8	8, 10	3/4-14
6-10 C50LO-S	5/16, 3/8	8, 10	7/8-14
8C50MLOS	1/2	12	3/4-16
8-6 C50LO-S	1/2	12	9/16-18
8-10C50MLOS	1/2	12	7/8-14
8-12 C50LO-S	1/2	12	1 1/16-12
10C50MLOS	5/8	14, 15, 16	7/8-14
10-8 C50LO-S	5/8	14, 15, 16	3/4-16
10-12 C50LO-S	5/8	14, 15, 16	1 1/16-12
12C50MLOS	3/4	18, 20	1 1/16-12
12-10C50MLOS	3/4	18, 20	7/8-14
12-16 C50LO-S	3/4	18, 20	1 5/16-12
16 C50LO-S	1	22, 25	1 5/16-12
16-12 C50LO-S	1	22, 25	1 1/16-12
16-20 C50LO-S	1	22, 25	1 5/8-12
20 C50LO-S	1 1/4	28, 30, 32	1 5/8-12
20-24 C50LO-S	1 1/4	28, 30, 32	1 7/8-12
24 C50LO-S	1 1/2	35, 38	1 7/8-12
24-20 C50LO-S	1 1/2	35, 38	1 5/8-12

# V50MLO - 45° male stud elbow - UNF - O-Ring



63 Parker DirectLink

Part number Steel	Tube Outside Diameter		Thread UNF
	inch	mm	
4V50MLOS	1/4	6	7/16-20
4-6 V50LO-S	1/4	6	9/16-18
6 V50LO-S	5/16, 3/8	8, 10	9/16-18
6-4 V50LO-S	5/16, 3/8	8, 10	7/16-20
6-8 V50LO-S	5/16, 3/8	8, 10	3/4-16
8V50MLOS	1/2	12	3/4-16
8-6 V50LO-S	1/2	12	9/16-18
8-10 V50LO-S	1/2	12	7/8-14
10 V50LO-S	5/8	14, 15, 16	7/8-14
10-8 V50LO-S	5/8	14, 15, 16	3/4-16
10-12 V50LO-S	5/8	14, 15, 16	1 1/16-12
12 V50LO-S	3/4	18, 20	1 1/16-12
12-10 V50LO-S	3/4	18, 20	7/8-14
12-16 V50LO-S	3/4	18, 20	1 5/16-12
16 V50LO-S	1	22, 25	1 5/16-12
16-20 V50LO-S	1	22, 25	1 5/8-12
20 V50LO-S	1 1/4	28, 30, 32	1 5/8-12
24 V50LO-S	1 1/2	35, 38	1 7/8-12

**S50MLO - Male stud branch tee - UNF - O-Ring**



63 Parker Direct Link

Part number Steel	Tube Outside Diameter		Thread UNF
	inch	mm	
4 S50LO-S	1/4	6	7/16-20
6S50MLOS	5/16, 3/8	8, 10	9/16-18
6-6-8 S50LO-S	5/16, 3/8	8, 10	3/4-16
8 S50LO-S	1/2	12	3/4-16
10 S50LO-S	5/8	14, 15, 16	7/8-14
12 S50LO-S	3/4	18, 20	1 1/16-12
16 S50LO-S	1	22, 25	1 5/16-12
20 S50LO-S	1 1/4	28, 30, 32	1 5/8-12
24 S50LO-S	1 1/2	35, 38	1 7/8-12

**R50MLO - Male stud run tee - UNF - O-Ring**



63 Parker Direct Link

Part number Steel	Tube Outside Diameter		Thread UNF
	inch	mm	
4 R50LO-S	1/4	6	7/16-20
6R50MLOS	5/16, 3/8	8, 10	9/16-18
8 R50LO-S	1/2	12	3/4-16
10 R50LO-S	5/8	14, 15, 16	7/8-14
12 R50LO-S	3/4	18, 20	1 1/16-12
16 R50LO-S	1	22, 25	1 5/16-12
20 R50LO-S	1 1/4	28, 30, 32	1 5/8-12
24 R50LO-S	1 1/2	35, 38	1 7/8-12

# 1 F42EDMLO - Male stud connector - BSPP - EOlastic seal



63 Parker DirectLink

Part number Steel	Tube Outside Diameter		Thread BSPP
	inch	mm	
4F42EDMLOS	1/4	6	1/8
4-4F42EDMLOS	1/4	6	1/4
4-6F42EDMLOS	1/4	6	3/8
4-8F42EDMLOS	1/4	6	1/2
6F42EDMLOS	5/16, 3/8	8, 10	1/4
6-2F42EDMLOS	5/16, 3/8	8, 10	1/8
6-6F42EDMLOS	5/16, 3/8	8, 10	3/8
6-8F42EDMLOS	5/16, 3/8	8, 10	1/2
6-12F42EDMLOS	5/16, 3/8	8, 10	3/4
8F42EDMLOS	1/2	12	3/8
8-4F42EDMLOS	1/2	12	1/4
8-8F42EDMLOS	1/2	12	1/2
8-12F42EDMLOS	1/2	12	3/4
10F42EDMLOS	5/8	14, 15, 16	1/2
10-6F42EDMLOS	5/8	14, 15, 16	3/8
10-12F42EDMLOS	5/8	14, 15, 16	3/4
10-16F42EDMLOS	5/8	14, 15, 16	1
12F42EDMLOS	3/4	18, 20	3/4
12-8F42EDMLOS	3/4	18, 20	1/2
12-16F42EDMLOS	3/4	18, 20	1
16F42EDMLOS	1	22, 25	1
16-12F42EDMLOS	1	22, 25	3/4
16-20F42EDMLOS	1	22, 25	1 1/4
20F42EDMLOS	1 1/4	28, 30, 32	1 1/4
20-16F42EDMLOS	1 1/4	28, 30, 32	1
24F42EDMLOS	1 1/2	35, 38	1 1/2
24-20F42EDMLOS	1 1/2	35, 38	1 1/4

# C40MLO - Male stud elbow - BSPP - O-Ring



63 Parker DirectLink

Part number Steel	Tube Outside Diameter		Thread BSPP
	inch	mm	
4C40MLOS	1/4	6	1/8
4-4C40MLOS	1/4	6	1/4
4-6C40MLOS	1/4	6	3/8
6C40MLOS	5/16, 3/8	8, 10	1/4
6-6C40MLOS	5/16, 3/8	8, 10	3/8
6-8C40MLOS	5/16, 3/8	8, 10	1/2
8C40MLOS	1/2	12	3/8
8-4C40MLOS	1/2	12	1/4
8-8C40MLOS	1/2	12	1/2
8-12C40MLOS	1/2	12	3/4
10C40MLOS	5/8	14, 15, 16	1/2
10-6C40MLOS	5/8	14, 15, 16	3/8
10-12C40MLOS	5/8	14, 15, 16	3/4
12C40MLOS	3/4	18, 20	3/4
12-8C40MLOS	3/4	18, 20	1/2
12-16C40MLOS	3/4	18, 20	1
16C40MLOS	1	22, 25	1
16-12C40MLOS	1	22, 25	3/4
20C40MLOS	1 1/4	28, 30, 32	1 1/4
20-16C40MLOS	1 1/4	28, 30, 32	1

**F870MLO - Male stud connector - Metric - O-Ring - ISO 6149**



63 Parker Direct Link

Part number Steel	Tube Outside Diameter		Thread Metric
	inch	mm	
4M12F870MLOS	1/4	6	M12x1.5
4M14F870MLOS	1/4	6	M14x1.5
6M12F870MLOS	5/16, 3/8	8, 10	M12x1.5
6M14F870MLOS	5/16, 3/8	8, 10	M14x1.5
6M16F870MLOS	5/16, 3/8	8, 10	M16x1.5
6M18F870MLOS	5/16, 3/8	8, 10	M18x1.5
8M14F870MLOS	1/2	12	M14x1.5
8M18F870MLOS	1/2	12	M18x1.5
8M22F870MLOS	1/2	12	M22x1.5
8M27F870MLOS	1/2	12	M27x2
10M18F870MLOS	5/8	14, 15, 16	M18x1.5
10M22F870MLOS	5/8	14, 15, 16	M22x1.5
12M22F870MLOS	3/4	18, 20	M22x1.5
12M27F870MLOS	3/4	18, 20	M27x2
12M33F870MLOS	3/4	18, 20	M33x2
16M33F870MLOS	1	22, 25	M33x2
20M42F870MLOS	1 1/4	28, 30, 32	M42x2
24M42F870MLOS	1 1/2	35, 38	M42x2
24M48F870MLOS	1 1/2	35, 38	M48x2

**C870MLO - Male stud elbow - Metric - O-Ring - ISO 6149**



63 Parker Direct Link

Part number Steel	Tube Outside Diameter		Thread Metric
	inch	mm	
4M12C870MLOS	1/4	6	M12x1.5
6M12C870MLOS	5/16, 3/8	8, 10	M12x1.5
6M14C870MLOS	5/16, 3/8	8, 10	M14x1.5
6M16C870MLOS	5/16, 3/8	8, 10	M16x1.5
8M14C870MLOS	1/2	12	M14x1.5
8M16C870MLOS	1/2	12	M16x1.5
8M18C870MLOS	1/2	12	M18x1.5
8M22C870MLOS	1/2	12	M22x1.5
10M18C870MLOS	5/8	14, 15, 16	M18x1.5
10M22C870MLOS	5/8	14, 15, 16	M22x1.5
12M22C870MLOS	3/4	18, 20	M22x1.5
12M27C870MLOS	3/4	18, 20	M27x2
16M33C870MLOS	1	22, 25	M33x2
20M42C870MLOS	1 1/4	28, 30, 32	M42x2
24M48C870MLOS	1 1/2	35, 38	M48x2

**1 V87OMLO - 45° male stud elbow - Metric - O-Ring - ISO 6149**

HYDRAULICS



63 Parker Direct Link

Part number Steel	Tube Outside Diameter		Thread Metric
	inch	mm	
4M12V87OMLOS	1/4	6	M12x1.5
6M16V87OMLOS	5/16, 3/8	8, 10	M16x1.5
8M18V87OMLOS	1/2	12	M18x1.5
10M22V87OMLOS	5/8	14, 15, 16	M22x1.5
12M27V87OMLOS	3/4	18, 20	M27x2
16M33V87OMLOS	1	22, 25	M33x2
20M42V87OMLOS	1 1/4	28, 30, 32	M42x2
24M48V87OMLOS	1 1/2	35, 38	M48x2

**S87OMLO - Male stud branch tee - Metric - O-Ring - ISO 6149**



63 Parker Direct Link

Part number Steel	Tube Outside Diameter		Thread Metric
	inch	mm	
4M12S87OMLOS	1/4	6	M12x1.5
6M16S87OMLOS	5/16, 3/8	8, 10	M16x1.5
8M18S87OMLOS	1/2	12	M18x1.5
10M22S87OMLOS	5/8	14, 15, 16	M22x1.5
12M27S87OMLOS	3/4	18, 20	M27x2
16M33S87OMLOS	1	22, 25	M33x2
20M42S87OMLOS	1 1/4	28, 30, 32	M42x2

**R87OMLO - Male stud run tee - Metric - O-Ring - ISO 6149**



63 Parker Direct Link

Part number Steel	Tube Outside Diameter		Thread Metric
	inch	mm	
4M12R87OMLOS	1/4	6	M12x1.5
6M16R87OMLOS	5/16, 3/8	8, 10	M16x1.5
8M18R87OMLOS	1/2	12	M18x1.5
10M22R87OMLOS	5/8	14, 15, 16	M22x1.5
12M27R87OMLOS	3/4	18, 20	M27x2
16M33R87OMLOS	1	22, 25	M33x2
20M42R87OMLOS	1 1/4	28, 30, 32	M42x2
24M48R87OMLOS	1 1/2	35, 38	M48x2

**F82EDMLO - Male stud connector - Metric - EOlastic seal**



63 Parker Direct Link

Part number Steel	Tube Outside Diameter		Thread Metric
	inch	mm	
4M10F82EDMLOS	1/4	6	M10x1
4M12F82EDMLOS	1/4	6	M12x1.5
4M14F82EDMLOS	1/4	6	M14x1.5
6M14F82EDMLOS	5/16, 3/8	8, 10	M14x1.5
6M16F82EDMLOS	5/16, 3/8	8, 10	M16x1.5
8M16F82EDMLOS	1/2	12	M16x1.5
8M18F82EDMLOS	1/2	12	M18x1.5
10M18F82EDMLOS	5/8	14, 15, 16	M18x1.5
10M22F82EDMLOS	5/8	14, 15, 16	M22x1.5
12M27F82EDMLOS	3/4	18, 20	M27x2
16M33F82EDMLOS	1	22, 25	M33x2
20M42F82EDMLOS	1 1/4	28, 30, 32	M42x2
24M48F82EDMLOS	1 1/2	35, 38	M48x2

**C80MLO - Male stud elbow - Metric - O-Ring**



63 Parker Direct Link

Part number Steel	Tube Outside Diameter		Thread Metric
	inch	mm	
4M12C80MLOS	1/4	6	M12x1.5
4M14C80MLOS	1/4	6	M14x1.5
6M16C80MLOS	5/16, 3/8	8, 10	M16x1.5
8M18C80MLOS	1/2	12	M18x1.5
10M22C80MLOS	5/8	14, 15, 16	M22x1.5
12M27C80MLOS	3/4	18, 20	M27x2
16M33C80MLOS	1	22, 25	M33x2
20M42C80MLOS	1 1/4	28, 30, 32	M42x2
24M48C80MLOS	1 1/2	35, 38	M48x2

**AOEL6 - Swivel nut stud elbow - UNF - O-Ring**



63 Parker Direct Link

Part number Steel	Tube Outside Diameter		Thread UNF
	inch	mm	
4 AOEL6-S	1/4	6	7/16-20
6 AOEL6-S	5/16, 3/8	8, 10	9/16-18
8 AOEL6-S	1/2	12	3/4-16
10 AOEL6-S	5/8	14, 15, 16	7/8-14
12 AOEL6-S	3/4	18, 20	1 1/16-12
16 AOEL6-S	1	22, 25	1 5/16-12
20 AOEL6-S	1 1/4	28, 30, 32	1 5/8-12
24 AOEL6-S	1 1/2	35, 38	1 7/8-12

**1 C6MLO - Swivel nut elbow**



63 Parker Direct Link

Part number Steel	Tube Outside Diameter		Thread UNF
	inch	mm	
4C6MLOS	1/4	6	9/16-18
6C6MLOS	5/16, 3/8	8, 10	11/16-16
8C6MLOS	1/2	12	13/16-16
10C6MLOS	5/8	14, 15, 16	1-14
12C6MLOS	3/4	18, 20	1 3/16-12
16C6MLOS	1	22, 25	1 7/16-12
20 C6LO-S	1 1/4	28, 30, 32	1 11/16-12
24 C6LO-S	1 1/2	35, 38	2-12

**S6MLO - Swivel nut branch tee**



63 Parker Direct Link

Part number Steel	Tube Outside Diameter		Thread UNF
	inch	mm	
4S6MLOS	1/4	6	9/16-18
6S6MLOS	5/16, 3/8	8, 10	11/16-16
8S6MLOS	1/2	12	13/16-16
10S6MLOS	5/8	14, 15, 16	1-14
12 S6LO-S	3/4	18, 20	1 3/16-12
16 S6LO-S	1	22, 25	1 7/16-12
20 S6LO-S	1 1/4	28, 30, 32	1 11/16-12
24 S6LO-S	1 1/2	35, 38	2-12

**R6MLO - Swivel nut run tee**



63 Parker Direct Link

Part number Steel	Tube Outside Diameter		Thread UNF
	inch	mm	
4R6MLOS	1/4	6	9/16-18
6R6MLOS	5/16, 3/8	8, 10	11/16-16
8R6MLOS	1/2	12	13/16-16
10R6MLOS	5/8	14, 15, 16	1-14
12 R6LO-S	3/4	18, 20	1 3/16-12
16 R6LO-S	1	22, 25	1 7/16-12
20 R6LO-S	1 1/4	28, 30, 32	1 11/16-12
24 R6LO-S	1 1/2	35, 38	2-12

**F642EDML - Swivel male stud - BSPP - E0lastic seal**



63 Parker Direct Link

Part number Steel	Tube Outside Diameter		Thread BSPP
	inch	mm	
4F642EDMLS	1/4	6	1/8
4-4F642EDMLS	1/4	6	1/4
6F642EDMLS	5/16, 3/8	8, 10	1/4
6-6F642EDMLS	5/16, 3/8	8, 10	3/8
8F642EDMLS	1/2	12	3/8
8-8F642EDMLS	1/2	12	1/2
10F642EDMLS	5/8	14, 15, 16	1/2
12F642EDMLS	3/4	18, 20	3/4
16F642EDMLS	1	22, 25	1
20F642EDMLS	1 1/4	28, 30, 32	1 1/4
24F642EDMLS	1 1/2	35, 38	1 1/2

**TPL - Sleeve metric tubing**



63 Parker Direct Link

Part number Steel	Tube Outside Diameter	
	mm	
TPLS6	6	
TPLS8	8	
TPLS10	10	
TPLS12-10	10	
TPLS12	12	
TPLS15	15	
TPLS16	16	
TPLS18	18	
TPLS20	20	
TPLS22	22	
TPLS25	25	
TPLS28	28	
TPLS30	30	
TPLS32	32	
TPLS35	35	
TPLS38	38	

**TL - Braze sleeve metric tubing\***



63 Parker Direct Link

Part number Steel	Tube Outside Diameter	
	mm	Size
TLS6	6	-04
TLS6-8	8	-04
TLS10-8	8	-06
TLS10	10	-06
TLS12	12	-08
TLS16	16	-10
TLS20-18	18	-12
TLS20	20	-12
TLS25	25	-16
TLS32-28	28	-20
TLS32-30	30	-20
TLS32	32	-20
TLS38	38	-24

\*Parts delivered oil dipped finish only - steel.



**1** TL\* - Reducing braze sleeve inch tubing

HYDRAULICS



63 Parker Direct Link

Part number Steel	Tube Outside Diameter	
	inch	Size
6-4 TL-S	1/4	-06
8-4 TL-S	1/4	-08
8-6 TL-S	3/8	-08
10-4 TL-S	1/4	-10
10-6 TL-S	3/8	-10
10-8 TL-S	1/2	-10
12-4 TL-S	1/4	-12
12-6 TL-S	3/8	-12
12-8 TL-S	1/2	-12
12-10 TL-S	5/8	-12
12-14 TL-S	7/8	-12
16-8 TL-S	1/2	-16
16-10 TL-S	5/8	-16
16-12 TL-S	3/4	-16
16-14 TL-S	7/8	-16
20-12 TL-S	3/4	-20
20-16 TL-S	1	-20
24-16 TL-S	1	-24
24-20 TL-S	1 1/4	-24

\*Parts delivered oil dipped finish only - steel.

**BML - Metric nut**



63 Parker Direct Link

Part number Steel	Tube Outside Diameter	
	inch	mm
4BMLS	1/4	6
6BMLS	5/16, 3/8	8, 10
8BMLS	1/2	12
10BMLS	5/8	14, 15, 16
12BMLS	3/4	18, 20
16BMLS	1	22, 25
20BMLS	1 1/4	28, 30, 32
24BMLS	1 1/2	35, 38

**BL - Inch nut**



63 Parker Direct Link

Part number Steel	Tube Outside Diameter	
	inch	mm
4 BL-S	1/4	6
6 BL-S	5/16, 3/8	8, 10
8 BL-S	1/2	12
10 BL-S	5/8	14, 15, 16
12 BL-S	3/4	18, 20
16 BL-S	1	22, 25
20 BL-S	1 1/4	28, 30, 32
24 BL-S	1 1/2	35, 38

**TRMLO - Tube end reducer**



63 Parker Direct Link

Part number Steel	Tube Outside Diameter		Thread UN/UNF-2A
	inch	mm	
6-4TRMLONS	3/8	10	9/16-18
8-4 TRLO-S	1/2	12	9/16-18
8-6TRMLONS	1/2	12	11/16-16
10-4 TRLO-S	5/8	16	9/16-18
10-6 TRLO-S	5/8	16	11/16-16
10-8 TRLO-S	5/8	16	13/16-16
12-4 TRLO-S	3/4	20	9/16-16
12-6 TRLO-S	3/4	20	11/16-16
12-8 TRLO-S	3/4	20	13/16-16
12-10TRMLONS	3/4	20	1-14
16-8 TRLO-S	1	25	13/16-16
16-10 TRLO-S	1	25	1-14
16-12 TRLON-S	1	25	1.3/16-12
20-12 TRLO-S	1 1/4	32	1.3/16-12
20-16 TRLON-S	1 1/4	32	1.7/16-12
24-16 TRLO-S	1 1/2	38	1.7/16-12
24-20 TRLO-S	1 1/2	38	1.11/16-12

**1 XHLO - Conversion union Triple-Lok® to O-Lok®**

HYDRAULICS



63 Parker Direct Link

Part number Steel	Tube Outside Diameter		Thread UN/UNF-2A	
	inch	mm	JIC	ORFS
4 XHLO-S	1/4	6	7/16-20	9/16-18
6 XHLO-S	5/16, 3/8	8, 10	9/16-18	1 1/16-16
8 XHLO-S	1/2	12	3/4-16	1 3/16-16
10 XHLO-S	5/8	14, 15, 16	7/8-14	1-14
12 XHLO-S	3/4	18, 20	1 1/16-12	1 3/16-12
16 XHLO-S	1	22, 25	1 5/16-12	1 7/16-12
20 XHLO-S	1 1/4	28, 30, 32	1 5/8-12	1 11/16-12
24 XHLO-S	1 1/2	35, 38	1 7/8-12	2-12

**XHL6 - Conversion swivel nut connector Triple-Lok® to O-Lok®**



63 Parker Direct Link

Part number Steel	Tube Outside Diameter		Thread UN/UNF-2A	
	inch	mm	JIC	ORFS
4 XHL6-S	1/4	6	7/16-20	9/16-18
6 XHL6-S	5/16, 3/8	8, 10	9/16-18	1 1/16-16
8 XHL6-S	1/2	12	3/4-16	1 3/16-16
10 XHL6-S	5/8	14, 15, 16	7/8-14	1-14
12 XHL6-S	3/4	18, 20	1 1/16-12	1 3/16-12
16 XHL6-S	1	22, 25	1 5/16-12	1 7/16-12

**LOHX6 - Conversion swivel nut connector Triple-Lok® to O-Lok®**



63 Parker Direct Link

Part number Steel	Tube Outside Diameter		Thread UN/UNF-2A	
	inch	mm	JIC	ORFS
4 LOHX6-S	1/4	6	7/16-20	9/16-18
6 LOHX6-S	5/16, 3/8	8, 10	9/16-18	1 1/16-16
8 LOHX6-S	1/2	12	3/4-16	1 3/16-16
10 LOHX6-S	5/8	14, 15, 16	7/8-14	1-14
12 LOHX6-S	3/4	18, 20	1 1/16-12	1 3/16-12
16 LOHX6-S	1	22, 25	1 5/16-12	1 7/16-12

**LOHB3\* - Braze connector**



63 Parker Direct Link

Part number Steel	Tube Outside Diameter inch	Thread UNF
4 LOHB3-S	1/4	9/16-18
4-6 LOHB3-S	3/8	9/16-18
6 LOHB3-S	3/8	11/16-16
6-4 LOHB3-S	1/4	11/16-16
6-8 LOHB3-S	1/2	11/16-16
8 LOHB3-S	1/2	13/16-16
8-6 LOHB3-S	3/8	13/16-16
8-10 LOHB3-S	5/8	13/16-16
8-12 LOHB3-S	3/4	13/16-16
10 LOHB3-S	5/8	1-14
10-8 LOHB3-S	1/2	1-14
10-12 LOHB3-S	3/4	1-14
12 LOHB3-S	3/4	1 3/16-12
12-8 LOHB3-S	1/2	1 3/16-12
12-16 LOHB3-S	1	1 3/16-12
16 LOHB3-S	1	1 7/16-12
16-12 LOHB3-S	3/4	1 7/16-12
16-20 LOHB3-S	1 1/4	1 7/16-12
20 LOHB3-S	1 1/4	1 11/16-12
20-16 LOHB3-S	1	1 11/16-12
20-24 LOHB3-S	1 1/2	1 11/16-12
24 LOHB3-S	1 1/2	2-12
24-20 LOHB3-S	1 1/4	2-12

\*Parts delivered oil dipped finish only - steel.

**FNML - Cap**



63 Parker Direct Link

Part number Steel	Thread UNF
4 FNL-S	9/16-18
6FNMLS	1 1/16-16
8FNMLS	1 3/16-16
10 FNL-S	1-14
12FNMLS	1 3/16-12
16FNMLS	1 7/16-12
20 FNL-S	1 11/16-12
24 FNL-S	2-12



1 O-Ring - NBR



63 Parker  
PowerLok

Part number	Thread Metric
6-074-N552-9	M10X1
2-012-N552-9	M12X1.5
2-013-N552-9	M14X1.5
3-907-N552-9	M16X1.5
2-114-N552-9	M18X1.5
2-018-N552-9	M22X1.5
2-119-N552-9	M27X2
2-122-N552-9	M33X2
2-128-N552-9	M42X2
2-132-N552-9	M48X2

HYDRAULICS



**PNMLO - Plug**



63 Parker Direct Link

Part number Steel	Tube Outside Diameter	
	inch	mm
4 PNLO-S	1/4	6
6PNMLOS	5/16, 3/8	8, 10
8PNMLOS	1/2	12
10 PNLO-S	5/8	14, 15, 16
12 PNLO-S	3/4	18, 20
16 PNLO-S	1	22, 25
20 PNLO-S	1 1/4	28, 30, 32
24 PNLO-S	1 1/2	35, 38

**TT4ML - Test point connector female - BSPP**



63 Parker Direct Link

Part number Steel	Thread	
	BSPP	UN/UNF-2B
4TT4MLS	1/4	9/16-18
6TT4MLS	1/4	11/16-16
8TT4MLS	1/4	13/16-16
10TT4LS	1/4	-
12TT4LS	1/4	-
16TT4LS	1/4	-
20TT4LS	1/4	-
24TT4LS	1/4	-

**TT8ML - Test point connector ORFS female swivel end - Metric female thread**



63 Parker Direct Link

Part number	Thread	
	Metric	UN/UNF-2B
6TT8MLS	M10X1	11/16-16
8TT8MLS	M10X1	13/16-16
10TT8LS	M10X1	-
12TT8LS	M10X1	-
16TT8LS	M10X1	-
20TT8LS	M10X1	-
24TT8LS	M10X1	-



- Description:**
  - Ball bearing rotary fittings are used for operating pressures up to 350 bar. Favourable pressure/RPM ratio.
  - Wear-resistant annular piston seals.
- Construction:**
  - 8 different versions with one rotational axis.
  - Multiaxial rotary couplings on request.
  - Tube connections according to DIN 2353, series S.
- Material:**
  - Casing, body nut and progressive ring in steel or stainless steel.
- Operating pressure:**
  - Maximum 350 bar (peak pressure).
  - Male stud sealing by EOlastic seals of NBR.
  - Male stud with metric parallel or BSPP thread.
- Flow media:**
  - Hydraulic oils and oil-based mineral lubricants.
  - Also for hydraulic HETG and HEES.
  - Not suitable for corrosive and HFC fluids or gases.
- Surface:**
  - CF Cr(VI)-free surface.
- Product range:**
  - Series L tube outside diameter 6 to 35 mm.
  - Series S tube outside diameter 6 to 38 mm.

- Advantages:**
  - Compact maintenance-free construction, service-proved.
  - Low starting torque.
  - Wear-resistant annular piston seals.
  - Available with different anti-corrosion surfaces (Cr(VI)-free).
  - Avoidance of tight bend radii in hose assemblies.
  - More freedom for configuring the design of hydraulic systems.
  - Ideal solution for hose assemblies which move.
- Benefits:**
  - Prevent problems with torsion and small bend radii in hose assemblies.
  - Prolong the life of the hydraulic system.
  - Reduce maintenance and downtime costs.

### DG-101 - Straight ball bearing rotary union - EO 24°



63 Parker Direct Link

Part number	Tube Outside Diameter mm
DG101/06SOMDCF	6
DG101/12SOMDCF	12
DG101/16SOMDCF	16

### DG-103 - Elbow ball bearing rotary union - EO 24°



63 Parker Direct Link

Part number	Tube Outside Diameter mm
DG103/20SOMDCF	20
DG103/25SOMDCF	25
DG103/38SOMDCF	38

**DG-104-R - Elbow male stud ball bearing rotary union - BSPP - EOlastic seal - EO 24°**



63 Parker Direct Link

Part number	Tube Outside Diameter mm	Thread BSPP
DG104/06SRMDCF	6	1/4A
DG104/08SRMDCF	8	1/4A
DG104/12SRMDCF	12	3/8A
DG104/16SRMDCF	16	1/2A
DG104/20SRMDCF	20	3/4A
DG104/25SRMDCF	25	1A
DG104/30SRMDCF	30	1 1/4A
DG104/38SRMDCF	38	1 1/2A

**DVGE-R - Straight male stud plain bearing rotary union - BSPP - EOlastic seal - EO 24°**



63 Parker Direct Link

Part number	Tube Outside Diameter mm	Thread BSPP
DVGE06LROMDCF	6	1/4A
DVGE08LROMDCF	8	1/4A
DVGE10LROMDCF	10	3/8A
DVGE12LROMDCF	12	1/2A
DVGE15LROMDCF	15	3/4A
DVGE18LROMDCF	18	1A
DVGE22LROMDCF	22	1A
DVGE28LROMDCF	28	1 1/4A
DVGE35LROMDCF	35	1 1/2A
DVGE06SRMDCF	6	1/4A
DVGE08SRMDCF	8	1/4A
DVGE10SRMDCF	10	3/8A
DVGE12SRMDCF	12	1/2A
DVGE14SRMDCF	14	3/4A
DVGE16SRMDCF	16	3/4A
DVGE20SRMDCF	20	1A
DVGE25SRMDCF	25	1A
DVGE30SRMDCF	30	1 1/4A
DVGE38SRMDCF	38	1 1/2A



- Description:**
- EO weld nipples are used for applications where the advantages of the EO program are needed and the rigidity of a solid weld connection is required. EO weld nipples are traditionally used for heavy duty applications occurring, for example, in hydraulic presses, mining, steel mills and shipbuilding.
- Material:**
- Steel and stainless steel.
- Product range:**
- Series L 6 to 42 mm tube outside diameter.
  - Series S 6 to 38 mm tube outside diameter.
- Nominal pressure PN:**
- Series L up to 315 bar.
  - Series S up to 630 bar.

- Advantages:**
- Unlike bite type or flared fittings, dimensional tolerances and rough tube surfaces are not very critical.
  - An elastomeric seal forms the primary sealing element.
  - The O-Ring seal is assembled with a high initial compression.
  - Little danger of tube blow off if the fitting is not properly tightened.
  - Can be disassembled and reassembled many times. There is no wear or widening up of the vulnerable inner fitting cone.
  - By welding, small deviations on tube cutting or bending can be compensated.
  - Designed to be used for most popular welding processes.

- Benefits:**
- Leakfree sealing assured. Even low-viscosity media such as water or gas are hermetically sealed.
  - No retightening required even after years of operation under extreme operating conditions.
  - A loose joint shows excessive leakage before total failure.
  - Damaged O-Rings can easily be replaced.
  - In an additional rolling process this critical edge is smoothed out for increased vibration strength.
  - Tension-free pipework is not likely to fail even under extreme operating conditions.

**AS - Weld connector - EO 24°**



63 Parker Direct Link

Part number	Tube Outside Diameter mm
Steel	Stainless Steel
AS06LX	AS06L71X
AS08LX	AS08L71X
AS10LX	AS10L71X
AS12LX	AS12L71X
AS15LX	-
AS18LX	AS18L71X
AS22LX	AS22L71X
AS28LX	AS28L71X
AS35LX	AS35L71X
AS42LX	AS42L71X
AS06SX	-
AS08SX	-
AS10SX	-
AS12SX	-
AS14SX	-
AS16SX	-
AS20SX	-
AS25SX	-
AS30SX	-
AS38SX	-



WAS - Weld elbow - EO 24°



63 Parker Direct Link

Part number Steel	Tube Outside Diameter mm
WAS06LX	6
WAS08LX	8
WAS10LX	10
WAS12LX	12
WAS15LX	15
WAS18LX	18
WAS22LX	22
WAS28LX	28
WAS35LX	35
WAS42LX	42
WAS10SX	10
WAS12SX	12
WAS14SX	14
WAS16SX	16
WAS20SX	20
WAS25SX	25
WAS30SX	30
WAS38SX	38



**1** **ESV - Weld bulkhead fitting - EO 24°**

HYDRAULICS



63 Parker  
Purotek UK

Part number Steel	Tube Outside Diameter mm
ESV06LX	6
ESV08LX	8
ESV10LX	10
ESV12LX	12
ESV15LX	15
ESV18LX	18
ESV22LX	22
ESV28LX	28
ESV35LX	35
ESV42LX	42
ESV06SX	6
ESV08SX	8
ESV10SX	10
ESV12SX	12
ESV14SX	14
ESV16SX	16
ESV20SX	20
ESV25SX	25
ESV30SX	30
ESV38SX	38

SKA - Weld nipple - EO 24°



**63** Powder  
Direct Link

Part number Steel	Tube Outside Diameter mm
SKA06X1.5	6
SKA08X1.5	8
SKA08X2	8
SKA10X1	10
SKA10X1.5	10
SKA10X2	10
SKA12X1.5	12
SKA12X2	12
SKA12X2.5	12
SKA15X2	15
SKA15X2.5	15
SKA18X2.5	18
SKA22X2.5	22
SKA28X2.5	28
SKA28X3	28
SKA35X3.5	35
SKA35X4	35
SKA42X3	42
SKA42X4	42
SKA14X2	14
SKA14X3	14
SKA16X1.5	16
SKA16X2	16
SKA16X2.5	16
SKA16X3	16
SKA20X2	20
SKA20X2.5	20
SKA20X3	20
SKA20X3.5	20
SKA20X4	20
SKA25X3	25
SKA25X4	25
SKA25X5	25
SKA30X3	30
SKA30X4	30
SKA30X5	30
SKA30X6	30
SKA38X4	38
SKA38X5	38
SKA38X6	38



**1 SKAR - Reducing weld nipple - EO 24°**

HYDRAULICS



63 Parker PowerLink

Part number Steel	Tube Outside Diameter mm
SKAR10/06X1.5	10
SKAR10/08X1.5	10
SKAR10/08X2	10
SKAR12/08X2	12
SKAR12/10X1.5	12
SKAR16/10X2	16
SKAR16/12X2	16
SKAR16/12X2.5	16
SKAR20/12X2.5	20
SKAR20/16X2.5	20
SKAR20/16X3	20
SKAR25/12X2.5	25
SKAR25/16X3	25
SKAR25/20X2	25
SKAR25/20X2.5	25
SKAR25/20X3	25
SKAR25/20X4	25
SKAR30/16X2	30
SKAR30/25X3	30
SKAR30/25X4	30
SKAR38/16X2	38
SKAR38/20X2.5	38
SKAR38/25X3	38
SKAR38/25X4	38
SKAR38/30X4	38

**SKA-RB - Tube bend weld nipple - EO 24°**



63 Parker PowerLink

Part number Steel	Tube Outside Diameter mm
SKA10X2RB	10
SKA12X2.5RB	12
SKA16X3RB	16
SKA20X4RB	20
SKA25X4RB	25
SKA25X5RB	25
SKA30X4RB	30
SKA30X5RB	30
SKA38X5RB	38
SKA38X6RB	38

<b>Description:</b>	<ul style="list-style-type: none"> <li>In addition to tube fittings, adaptors are needed to complete hydraulic circuits which perform different functions :                     <ul style="list-style-type: none"> <li>Thread size adaptors to reduce or expand the existing thread.</li> <li>Thread conversion adaptors to change from one port thread to another to allow tube fitting or hose connections to be made.</li> <li>Hose end adaptors: hose to port, hose to hose etc.</li> </ul> </li> <li>Blanking plugs.</li> </ul>
<b>Applications:</b>	<ul style="list-style-type: none"> <li>Adaptors are frequently used in maintenance situations, where equipment is used outside the region in which it was manufactured. For example, to convert BSPP threads from a European manufacturer to an American thread alternative, UNF or NPT.</li> </ul>
<b>Advantages:</b>	<ul style="list-style-type: none"> <li>SAE straight thread O-Ring connections offer high sealing reliability, especially in dynamic and shock loading applications.</li> <li>Design is extremely easy to assemble, even for less experienced workers.</li> <li>Design of shaped fittings incorporating adjustable SAE straight thread connections.</li> <li>The sealing and mechanical holding functions are separated.</li> </ul>
<b>Benefits:</b>	<ul style="list-style-type: none"> <li>O-Ring seal offers a wide tolerance of minor surface imperfections and damage.</li> <li>Infinite positioning of the port end.</li> <li>Aligning for tube and hose connections is much easier compared with tapered threads.</li> <li>The SAE straight thread male studs can be re-used many times simply by changing the O-Ring.</li> </ul>

### FFM - Male nipple - NPTF



63 Parker PowerLine

Part number Steel	Thread 1	Thread 2
	NPT/NPTF	
1/8 FF-S	1/8-27	1/8-27
1/4 X 1/8 FF-S	1/4-18	1/8-27
1/4FFMS	1/4-18	1/4-18
3/8 X 1/8 FF-S	3/8-18	1/8-27
3/8 X 1/4 FF-S	3/8-18	1/4-18
3/8 FF-S	3/8-18	3/8-18
1/2 X 1/4 FF-S	1/2-14	1/4-18
1/2 X 3/8 FF-S	1/2-14	3/8-18
1/2FFMS	1/2-14	1/2-14
3/4 X 1/4 FF-S	3/4-14	1/4-18
3/4 X 1/2 FF-S	3/4-14	1/2-14
3/4FFMS	3/4-14	3/4-14
1 FF-S	1-11 1/2	1-11 1/2
1 X 3/4 FF-S	1-11 1/2	3/4-14
1 1/4 X 1 FF-S	1 1/4-11 1/2	1-11 1/2
1 1/4 FF-S	1 1/4-11 1/2	1 1/4-11 1/2
1 1/2 FF-S	1 1/2-11 1/2	1 1/2-11 1/2
2 FF-S	2-11 1/2	2-11 1/2



**1 CR - Male thread elbow - NPTF**



63 Parker DirectLink

Part number Steel	Stainless Steel	Thread 1	Thread 2
		NPT/NPTF	
1/8 CR-S	1/8 CR-SS	1/8-27	1/8-27
1/4 CR-S	1/4 CR-SS	1/4-18	1/4-18
3/8 CR-S	3/8 CR-SS	3/8-18	3/8-18
3/8 X 1/4 CR-S	-	3/8-18	1/4-18
1/2 CR-S	1/2 CR-SS	1/2-14	1/2-14
1/2 X 3/8 CR-S	-	1/2-14	3/8-18
3/4 CR-S	3/4 CR-SS	3/4-14	3/4-14
3/4 X 1/2 CR-S	-	3/4-14	1/2-14
1 CR-S	1 CR-SS	1-11 1/2	1-11 1/2
1 1/4 CR-S	-	1 1/4-11 1/2	1 1/4-11 1/2
1 1/2 CR-S	1 1/2 CR-SS	1 1/2-11 1/2	1 1/2-11 1/2

**RRS - Male thread tee - NPTF**

Part number Steel	Stainless Steel	Thread NPTF
1/8 RRS-S	1/8 RRS-SS	1/8-27
1/4 RRS-S	1/4 RRS-SS	1/4-18
3/8 RRS-S	3/8 RRS-SS	3/8-18
1/2 RRS-S	1/2 RRS-SS	1/2-14
3/4 RRS-S	3/4 RRS-SS	3/4-14

63 Parker DirectLink

**PTRM - Thread reducer - NPTF**



63 Parker DirectLink

Part number Steel	Thread 1	Thread 2
	NPT/NPTF	
1/4 X 1/8 PTR-S	1/4-18	1/8-27
3/8 X 1/8 PTR-S	3/8-18	1/8-27
3/8 X 1/4 PTR-S	3/8-18	1/4-18
1/2 X 1/8 PTR-S	1/2-14	1/8-27
1/2 X 1/4 PTR-S	1/2-14	1/4-18
1/2 X 3/8 PTR-S	1/2-14	3/8-18
3/4 X 1/4 PTR-S	3/4-14	1/4-18
3/4 X 3/8 PTR-S	3/4-14	3/8-18
3/4 X 1/2 PTR-S	3/4-14	1/2-14
1 X 3/8 PTR-S	1-11 1/2	3/8-18
1 X 1/2 PTR-S	1-11 1/2	1/2-14
1 X 3/4 PTR-S	1-11 1/2	3/4-14
1 1/4 X 1/2 PTR-S	1 1/4-11 1/2	1/2-14
1 1/4 X 3/4 PTR-S	1 1/4-11 1/2	3/4-14
1 1/4 X 1 PTR-S	1 1/4-11 1/2	1-11 1/2
1 1/2 X 3/4 PTR-S	1 1/2-11 1/2	3/4-14
1 1/2 X 1 PTR-S	1 1/2-11 1/2	1-11 1/2
1 1/2 X 1 1/4 PTR-S	1 1/2-11 1/2	1 1/4-11 1/2
2 X 1 1/4 PTR-S	2-11 1/2	1 1/4-11 1/2

HYDRAULICS

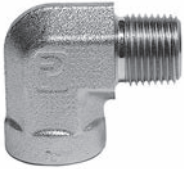
**FG - Thread expander - Adaptor - NPTF**



63 Parker Direct Link

Part number Steel	Thread 1	Thread 2
	NPT/NPTF	
1/8 FG-S	1/8-27	1/8-27
1/4 X 1/8 FG-S	1/4-18	1/8-27
1/4 FG-S	1/4-18	1/4-18
3/8 X 1/8 FG-S	3/8-18	1/8-27
3/8 X 1/4 FG-S	3/8-18	1/4-18
3/8 FG-S	3/8-18	3/8-18
1/2 X 1/8 FG-S	1/2-14	1/8-27
1/2 X 1/4 FG-S	1/2-14	1/4-18
1/2 X 3/8 FG-S	1/2-14	3/8-18
1/2 FG-S	1/2-14	1/2-14
3/4 FG-S	3/4-14	3/4-14
3/4 X 1/4 FG-S	3/4-14	1/4-18
3/4 X 1/2 FG-S	3/4-14	1/2-14
1 FG-S	1-11 1/2	1-11 1/2
1 X 1/2 FG-S	1-11 1/2	1/2-14
1 X 3/4 FG-S	1-11 1/2	3/4-14
1 1/4 X 1 FG-S	1 1/4-11 1/2	1-11 1/2

**CDM - Male-female thread elbow - NPTF**



63 Parker Direct Link

Part number Steel	Stainless Steel	Thread 1	Thread 2
		NPT/NPTF	
1/8 CD-S	1/8 CD-SS	1/8-27	1/8-27
1/4CDMS	1/4 CD-SS	1/4-18	1/4-18
1/4 X 1/8 CD-S	-	1/4-18	1/8-27
3/8CDMS	3/8 CD-SS	3/8-18	3/8-18
3/8 X 1/4 CD-S	-	3/8-18	1/4-18
3/8 X 1/2 CD-S	-	3/8-18	1/2-14
1/2 CD-S	1/2 CD-SS	1/2-14	1/2-14
1/2 X 3/8 CD-S	-	1/2-14	3/8-18
1/2 X 3/4 CD-S	-	1/2-14	3/4-14
3/4 CD-S	3/4 CD-SS	3/4-14	3/4-14
3/4 X 1/2 CD-S	3/4 X 1/2 CD-SS	3/4-14	1/2-14
1 CD-S	1 CD-SS	1-11 1/2	1-11 1/2
1 1/4 CD-S	-	1 1/4-11 1/2	1 1/4-11 1/2
1 1/2 CD-S	-	1 1/2-11 1/2	1 1/2-11 1/2

**CD45M - Male-female thread 45° elbow - NPTF**

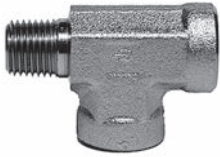


63 Parker PowerLink

Part number Steel	Stainless Steel	Thread 1	Thread 2
		NPT/NPTF	
1/8CD45MS	-	1/8-27	1/8-27
1/4 CD45-S	1/4 CD45-SS	1/4-18	1/4-18
3/8 CD45-S	3/8 CD45-SS	3/8-18	3/8-18
1/2 CD45-S	1/2 CD45-SS	1/2-14	1/2-14
3/4 CD45-S	3/4 CD45-SS	3/4-14	3/4-14
1 CD45-S	1 CD45-SS	1-11 1/2	1-11 1/2



**1 MRO - Male-female thread tee - NPTF**



63 Parker DirectLink

Part number	Steel	Stainless Steel	Thread 1	Thread 2
			NPT/NPTF	
1/8 MRO-S		1/8 MRO-SS	1/8-27	1/8-27
1/4 MRO-S		1/4 MRO-SS	1/4-18	1/4-18
3/8 MRO-S		3/8 MRO-SS	3/8-18	3/8-18
1/2 MRO-S		1/2 MRO-SS	1/2-14	1/2-14
3/4 MRO-S		3/4 MRO-SS	3/4-14	3/4-14
1 MRO-S		1 MRO-SS	1-11 1/2	1-11 1/2

**MMS - Male-female thread tee - NPTF**



63 Parker DirectLink

Part number	Steel	Stainless Steel	Thread 1	Thread 2
			NPT/NPTF	
1/8 MMS-S		-	1/8-27	1/8-27
1/4 MMS-S		1/4 MMS-SS	1/4-18	1/4-18
3/8 MMS-S		3/8 MMS-SS	3/8-18	3/8-18
1/2 MMS-S		1/2 MMS-SS	1/2-14	1/2-14
3/4 MMS-S		3/4 MMS-SS	3/4-14	3/4-14
1 MMS-S		-	1-11 1/2	1-11 1/2

HYDRAULICS

**GG - Female thread coupling - NPTF**



63 Parker Direct Link

Part number		Thread 1	Thread 2
Steel	Stainless Steel	NPT/NPTF	
1/8 GG-S	1/8 GG-SS	1/8-27	1/8-27
1/4 X 1/8 GG-S	-	1/4-18	1/8-27
1/4 GG-S	1/4 GG-SS	1/4-18	1/4-18
3/8 X 1/8 GG-S	-	3/8-18	1/8-27
3/8 X 1/4 GG-S	-	3/8-18	1/4-18
3/8 GG-S	3/8 GG-SS	3/8-18	3/8-18
1/2 X 1/4 GG-S	1/2X1/4 GG-S	1/2-14	1/4-18
1/2 X 3/8 GG-S	1/2X3/8 GG-S	1/2-14	3/8-18
1/2 GG-S	1/2 GG-SS	1/2-14	1/2-14
3/4 X 1/2 GG-S	-	3/4-14	1/2-14
3/4 GG-S	3/4 GG-SS	3/4-14	3/4-14
1 GG-S	1 GG-SS	1-11 1/2	1-11 1/2
1 1/4 GG-S	-	1 1/4-11 1/2	1 1/4-11 1/2
1 1/2 GG-S	-	1 1/2-11 1/2	1 1/2-11 1/2

**DDM - Female thread elbow - NPTF**



63 Parker Direct Link

Part number		Thread
Steel	Stainless Steel	NPTF
1/8 DD-S	1/8 DD-SS	1/8-27
1/4 DD-S	1/4 DD-SS	1/4-18
3/8DDMS	3/8DDMSS	3/8-18
1/2DDMS	1/2DDMSS	1/2-14
3/4 DD-S	3/4 DD-SS	3/4-14
1 DD-S	1 DD-SS	1-11 1/2
1 1/4 DD-S	11/4 DD-SS	1 1/4-11 1/2
1 1/2 DD-S	11/2 DD-SS	1 1/2-11 1/2

**DD45 - Female thread 45° elbow - NPTF**



63 Parker Direct Link

Part number		Thread
Steel	Stainless Steel	NPTF
1/4 DD45-S	1/4 DD45-SS	1/4-18
3/8 DD45-S	3/8 DD45-SS	3/8-18
1/2 DD45-S	1/2 DD45-SS	1/2-14
3/4 DD45-S	3/4 DD45-SS	3/4-14
1 DD45-S	1 DD45-SS	1-11 1/2

**1 MMO - Female thread tee - NPTF**



63 Parker DirectLink

Part number		Thread
Steel	Stainless Steel	NPTF
1/8 MMO-S	1/8 MMO-SS	1/8-27
1/4 MMO-S	1/4 MMO-SS	1/4-18
3/8 MMO-S	3/8 MMO-SS	3/8-18
1/2 MMO-S	1/2 MMO-SS	1/2-14
3/4 MMO-S	3/4 MMO-SS	3/4-14
1 MMO-S	1 MMO-SS	1-11 1/2
1 1/4 MMO-S	-	1 1/4-11 1/2
1 1/2 MMO-S	-	1 1/2-11 1/2

**KMMOO - Female thread cross - NPTF**



63 Parker DirectLink

Part number		Thread
Steel	Stainless Steel	NPTF
1/8 KMMOO-S	1/8 KMMOO-SS	1/8-27
1/4 KMMOO-S	1/4 KMMOO-SS	1/4-18
3/8 KMMOO-S	3/8 KMMOO-SS	3/8-18
1/2 KMMOO-S	1/2 KMMOO-SS	1/2-14
3/4 KMMOO-S	3/4 KMMOO-SS	3/4-14
1 KMMOO-S	1 KMMOO-SS	1-11 1/2

**HP - Hexagon head plug - NPTF**



63 Parker DirectLink

Part number		Thread
Steel	Stainless Steel	NPTF
1/8 HP-S	1/8HPMSS	1/8-27
1/4 HP-S	1/4HPMSS	1/4-18
3/8 HP-S	3/8HPMSS	3/8-18
1/2 HP-S	1/2HPMSS	1/2-14
3/4 HP-S	3/4HPMSS	3/4-14
1 HP-S	1HPMSS	1-11 1/2
1 1/4 HP-S	1 1/4HPMSS	1 1/4-11 1/2
1 1/2 HP-S	1 1/2HPMSS	1 1/2-11 1/2

**HHP - Hexagon socket plug - NPTF**



63 Parker DirectLink

Part number		Thread
Steel	Stainless Steel	NPTF
1/16 HHP-S	1/16 HHP-SS	1/16-27
1/8 HHP-S	1/8 HHP-SS	1/8-27
1/4 HHP-S	1/4 HHP-SS	1/4-18
3/8 HHP-S	3/8 HHP-SS	3/8-18
1/2 HHP-S	1/2 HHP-SS	1/2-14
3/4 HHP-S	3/4 HHP-SS	3/4-14
1 HHP-S	1 HHP-SS	1-11 1/2

**F50G - Male-female thread adaptor - UNF**



63 Parker Direct Link

Part number Steel	Stainless Steel	Thread	
		NPTF	UN/UNF-2A
6-1/4 F50G-S	6-1/4 F50G-SS	1/4-18	9/16-18
8-1/4 F50G-S	8-1/4 F50G-SS	1/4-18	3/4-16
8-3/8 F50G-S	8-3/8 F50G-SS	3/8-18	3/4-16
8-1/2 F50G-S	8-1/2 F50G-SS	1/2-14	3/4-16
10-1/4 F50G-S	10-1/4 F50G-SS	1/4-18	7/8-14
10-3/8 F50G-S	10-3/8 F50G-SS	3/8-18	7/8-14
10-1/2 F50G-S	10-1/2 F50G-SS	1/2-14	7/8-14
10-3/4 F50G-S	-	3/4-14	7/8-14
12-1/2 F50G-S	12-1/2 F50G-SS	1/2-14	1 1/16-12
12-3/4 F50G-S	12-3/4 F50G-SS	3/4-14	1 1/16-12
14-1/2 F50G-S	-	1/2-14	1.3/16-12
14-3/4 F50G-S	-	3/4-14	1.3/16-12
16-1/2 F50G-S	16-1/2 F50G-SS	1/2-14	1 5/16-12
16-3/4 F50G-S	16-3/4 F50G-SS	3/4-14	1 5/16-12
16-1 F50G-S	16-1 F50G-SS	1-11 1/2	1 5/16-12
20-1 F50G-S	20-1 F50G-SS	1-11 1/2	1 5/8-12
20-1 1/4 F50G-S	-	1 1/4-11 1/2	1 5/8-12
24-1 F50G-S	24-1 F50G-SS	1-11 1/2	1 7/8-12
24-1 1/2 F50G-S	-	1 1/2-11 1/2	1 7/8-12

**AOEG - Male elbow UNF to female NPT**



63 Parker Direct Link

Part number Steel	Thread	
	UNF	NPTF
8-3/8 AOEG-S	3/4-16	3/8-18
10-1/2 AOEG-S	7/8-14	1/2-14
12-3/4 AOEG-S	1 1/16-12	3/4-14
16-1 AOEG-S	1 5/16-12	1-11 1/2

**1 F50G5 - Thread reducer/expander - UNF**

HYDRAULICS



63 Parker Direct Link

Part number Steel	Stainless Steel	Thread	
		UN/UNF-2A	UN/UNF-2B
4-6 F50G5-S	4-6 F50G5-SS	7/16-20	9/16-18
6-4 F50G5-S	6-4 F50G5-SS	9/16-18	7/16-20
6-8 F50G5-S	6-8 F50G5-SS	9/16-18	3/4-16
8-6 F50G5-S	8-6 F50G5-SS	3/4-16	9/16-18
8-10 F50G5-S	8-10 F50G5-SS	3/4-16	7/8-14
10-6 F50G5-S	10-6 F50G5-SS	7/8-14	9/16-18
10-8 F50G5-S	10-8 F50G5-SS	7/8-14	3/4-16
10-12 F50G5-S	10-12 F50G5-SS	7/8-14	1 1/16-12
12-8 F50G5-S	12-8 F50G5-SS	1 1/16-12	3/4-16
12-10 F50G5-S	12-10 F50G5-SS	1 1/16-12	7/8-14
12-16 F50G5-S	12-16 F50G5-SS	1 1/16-12	1 5/16-12
16-8 F50G5-S	16-8 F50G5-SS	1 5/16-12	3/4-16
16-10 F50G5-S	-	1 5/16-12	7/8-14
16-20 F50G5-S	-	1 5/16-12	1 5/8-12
20-12 F50G5-S	20-12 F50G5-SS	1 5/8-12	1 1/16-12
20-16 F50G5-S	20-16 F50G5-SS	1 5/8-12	1 5/16-12
24-12 F50G5-S	24-12 F50G5-SS	1 7/8-12	1 1/16-12
24-16 F50G5-S	24-16 F50G5-SS	1 7/8-12	1 5/16-12
24-20 F50G5-S	24-20 F50G5-SS	1 7/8-12	1 5/8-12

**P50N - Hexagon head plug - UNF**



63 Parker Direct Link

Part number Steel	Thread
	UN/UNF-2A
2 P50N-S	5/16-24
3 P50N-S	3/8-24
4 P50N-S	7/16-20
5 P50N-S	1/2-20
6 P50N-S	9/16-18
8 P50N-S	3/4-16
10 P50N-S	7/8-14
12 P50N-S	1 1/16-12
14 P50N-S	1.3/16-12
16 P50N-S	1 5/16-12
20 P50N-S	1 5/8-12
24 P50N-S	1 7/8-12
32 P50N-S	2.1/2-12

**HP50N - Hexagon socket plug - UNF**



**63** Parker Direct Link

Part number	Steel	Stainless Steel	Thread
2 HP50N-S	-	-	5/16-24
3 HP50N-S	-	-	3/8-24
4 HP50N-S	4 HP50N-SS	-	7/16-20
5 HP50N-S	-	-	1/2-20
6 HP50N-S	6 HP50N-SS	-	9/16-18
8 HP50N-S	8 HP50N-SS	-	3/4-16
10 HP50N-S	10 HP50N-SS	-	7/8-14
12 HP50N-S	12HP50N-SS	-	1 1/16-12
14 HP50N-S	14 HP50N-SS	-	1.3/16-12
16 HP50N-S	16 HP50N-SS	-	1 5/16-12
20 HP50N-S	20 HP50N-SS	-	1 5/8-12
24 HP50N-S	24 HP50N-SS	-	1 7/8-12



**1 F40HG5 - Adaptor male thread BSPP - Female UNF**



63 Parker  
Direct Link

Part number	Thread	
	BSPP	UN/UNF-2B
1/8-4F40HG5S	1/8-28	7/16-20
1/4-6F40HG5S	1/4-19	9/16-18
3/8-6F40HG5S	3/8-19	9/16-18
3/8-8F40HG5S	3/8-19	3/4-16
1/2-10F40HG5S	1/2-14	7/8-14
3/4-12F40HG5S	3/4-14	1 1/16-12
1-16F40HG5S	1-11	1 5/16-12
1 1/4-20F40HG5S	1 1/4-11	1 5/8-12

**F80HG5 - Male-female thread adaptor - Male metric - Female UNF**



63 Parker  
Direct Link

Part number	Thread	
	Metric	UN/UNF-2B
M10-4F80HG5S	M10X1	7/16-20
M14-6F80HG5S	M14X1.5	9/16-18
M16-8F80HG5S	M16X1.5	3/4-16
M22-10F80HG5S	M22X1.5	7/8-14

HYDRAULICS

**HMK4 - Union - 60° cone - BSPP**



**63** Parker  
Direct Line

Part number Steel	Thread 1	Thread 2
	BSPP	
2HMK4S	1/8	1/8
4-2HMK4S	1/4	1/8
4HMK4S	1/4	1/4
6-4HMK4S	3/8	1/4
6HMK4S	3/8	3/8
8-4HMK4S	1/2	1/4
8-6HMK4S	1/2	3/8
8HMK4S	1/2	1/2
10-8HMK4S	5/8	1/2
10HMK4S	5/8	5/8
12-6HMK4S	3/4	3/8
12-8HMK4S	3/4	1/2
12-10HMK4S	3/4	5/8
12HMK4S	3/4	3/4
16-8HMK4S	1	1/2
16-12HMK4S	1	3/4
16HMK4S	1	1
20-16HMK4S	1 1/4	1
20HMK4S	1 1/4	1 1/4
24-16HMK4S	1 1/2	1
24-20HMK4S	1 1/2	1 1/4
24HMK4S	1 1/2	1 1/2
32-24HMK4S	2	1 1/2
32HMK4S	2	2

**F3MK4 - Male stud connector - BSPP 60° cone (ISO 8434-6) - BSPP - Male BSPT (ISO 7)**



**63** Parker  
Direct Line

Part number Steel	Thread	
	BSPP	BSPT
4-4F3MK4S	1/4	1/4
4F3MK4S	1/4	1/8
4-6F3MK4S	1/4	3/8
6-6F3MK4S	3/8	3/8
6-8F3MK4S	3/8	1/2
6F3MK4S	3/8	1/4
8-8F3MK4S	1/2	1/2
8F3MK4S	1/2	3/8
10F3MK4S	5/8	1/2
10-12F3MK4S	5/8	3/4
12-8F3MK4S	3/4	1/2
12F3MK4S	3/4	3/4
12-16F3MK4S	3/4	1
16-12F3MK4S	1	3/4
16F3MK4S	1	1
20F3MK4S	1 1/4	1 1/4
24F3MK4S	1 1/2	1 1/2



**1 F6MK4 - Swivel male stud - 60° cone - BSPP**



63 Parker  
Direct Link

Part number Steel	Thread 1	Thread 2
	BSPP	
4-F6MK4S	1/4	1/4
6-4F6MK4S	3/8	1/4
6-6F6MK4S	3/8	3/8
8-6F6MK4S	1/2	3/8
8-8F6MK4S	1/2	1/2
12-8F6MK4S	3/4	1/2
12-12F6MK4S	3/4	3/4
16-16F6MK4S	1	1

**C6MK4 - Swivel nut elbow - 60° cone - BSPP**



63 Parker  
Direct Link

Part number Steel	Thread BSPP
4C6MK4S	1/4
6C6MK4S	3/8
8C6MK4S	1/2
10C6MK4S	5/8
12C6MK4S	3/4
16C6MK4S	1

**FNMK4 - Cap - 60° cone - BSPP**



63 Parker  
Direct Link

Part number Steel	Thread BSPP
4FNMK4S	1/4
6FNMK4S	3/8
8FNMK4S	1/2
10FNMK4S	5/8
12FNMK4S	3/4
16FNMK4S	1
20FNMK4S	1 1/4
24FNMK4S	1 1/2

**PNMK4 - Plug - 60° cone - BSPP**

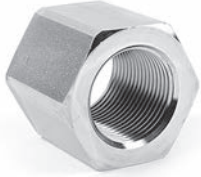


63 Parker  
Direct Link

Part number Steel	Thread BSPP
2PNMK4S	1/8
4PNMK4S	1/4
6PNMK4S	3/8
8PNMK4S	1/2
10PNMK4S	5/8
12PNMK4S	3/4
16PNMK4S	1
20PNMK4S	1 1/4
24PNMK4S	1 1/2

HYDRAULICS

**GG44M - Female thread coupling BSPP**



63 Parker Direct Link

Part number Steel	Thread BSPP
1/8GG44MS	1/8
1/4GG44MS	1/4
3/8GG44MS	3/8
1/2GG44MS	1/2
3/4GG44MS	3/4
1GG44MS	1

**MM0444M - Female thread tee BSPP**



63 Parker PowerLink

Part number Steel	Thread BSPP
1/4MM0444MS	1/4
3/8MM0444MS	3/8
1/2MM0444MS	1/2
3/4MM0444MS	3/4
1MM0444MS	1

**FF33M - Male nipple BSPT**



63 Parker PowerLink

Part number Steel	Thread 1	Thread 2
	BSPT	
1/8FF33MS	1/8	1/8
1/4X1/8FF33MS	1/4	1/8
1/4FF33MS	1/4	1/4
3/8X1/4FF33MS	3/8	1/4
3/8FF33MS	3/8	3/8
1/2X3/8FF33MS	1/2	3/8
1/2FF33MS	1/2	1/2
3/4X1/2FF33MS	3/4	1/2
3/4FF33MS	3/4	3/4
1X3/4FF33MS	1	3/4

**1 0107 - Swivel male stud NPTF - Female NPSM**



63 Parker DirectLink

Part number Steel	Thread	
	NPTF	NPSM
0107-2-2	1/8-27	1/8-27
0107-2-4	1/8-27	1/4-18
0107-4-4	1/4-18	1/4-18
0107-4-6	1/4-18	3/8-18
0107-4-8	1/4-18	1/2-14
0107-6-4	3/8-18	1/4-18
0107-6-6	3/8-18	3/8-18
0107-6-8	3/8-18	1/2-14
0107-8-6	1/2-14	3/8-18
0107-8-8	1/2-14	1/2-14
0107-8-12	1/2-14	3/4-14
0107-12-8	3/4-14	1/2-14
0107-12-12	3/4-14	3/4-14
0107-12-16	3/4-14	1-11 1/2
0107-16-12	1-11 1/2	3/4-14
0107-16-16	1-11 1/2	1-11 1/2
0107-16-20	1-11 1/2	1 1/4-11 1/2
0107-20-20	1 1/4-11 1/2	1 1/4-11 1/2
0107-24-24	1 1/2-11 1/2	1 1/2-11 1/2
0107-32-32	2-11 1/2	2-11 1/2

**2107 - Swivel male elbow NPTF - Female NPSM**



63 Parker DirectLink

Part number Steel	Thread	
	NPTF	NPSM
2107-2-2	1/8-27	1/8-27
2107-4-4	1/4-18	1/4-18
2107-4-6	1/4-18	3/8-1/8
2107-6-4	3/8-18	1/4-18
2107-6-6	3/8-18	3/8-1/8
2107-6-8	3/8-18	1/2-14
2107-8-6	1/2-14	3/8-1/8
2107-8-8	1/2-14	1/2-14
2107-8-12	1/2-14	3/4-14
2107-12-6	3/4-14	3/8-1/8
2107-12-8	3/4-14	1/2-14
2107-12-12	3/4-14	3/4-14
2107-16-12	1-11 1/2	3/4-14
2107-16-16	1-11 1/2	1-11 1/2
2107-20-20	1 1/4-11 1/2	1 1/4-11 1/2
2107-24-24	1 1/2-11 1/2	1 1/2-11 1/2
2107-32-32	2-11 1/2	2-11 1/2

HYDRAULICS



**3107 - Swivel male 45° elbow NPTF - Female NPSM**



63 Parker Direct Link

Part number	Thread	
	NPTF	NPSM
3107-2-2	1/8-27	1/8-27
3107-4-4	1/4-18	1/4-18
3107-6-6	3/8-18	3/8-1/8
3107-8-6	1/2-14	3/8-1/8
3107-8-8	1/2-14	1/2-14
3107-12-8	3/4-14	1/2-14
3107-12-12	3/4-14	3/4-14
3107-16-12	1-11 1/2	3/4-14
3107-16-16	1-11 1/2	1-11 1/2
3107-20-20	1 1/4-11 1/2	1 1/4-11 1/2
3107-24-24	1 1/2-11 1/2	1 1/2-11 1/2
3107-32-32	2-11 1/2	2-11 1/2

**0207 - Female connector NPTF - Female NPSM**



63 Parker Direct Link

Part number	Thread	
	NPTF	NPSM
0207-2-2	1/8-27	1/8-27
0207-4-4	1/4-18	1/4-18
0207-6-4	3/8-18	1/4-18
0207-6-6	3/8-18	3/8-18
0207-8-8	1/2-14	1/2-14
0207-12-12	3/4-14	3/4-14
0207-16-16	1-11 1/2	1-11 1/2
0207-20-20	1 1/4-11 1/2	1 1/4-11 1/2
0207-24-24	1 1/2-11 1/2	1 1/2-11 1/2
0207-32-32	2-11 1/2	2-11 1/2

**2207 - Female elbow NPTF - Female NPSM**



63 Parker Direct Link

Part number	Thread	
	NPTF	NPSM
2207-2-2	1/8-27	1/8-27
2207-4-4	1/4-18	1/4-18
2207-6-6	3/8-18	3/8-1/8
2207-8-8	1/2-14	1/2-14
2207-12-12	3/4-14	3/4-14
2207-16-16	1-11 1/2	1-11 1/2
2207-20-20	1 1/4-11 1/2	1 1/4-11 1/2
2207-24-24	1 1/2-11 1/2	1 1/2-11 1/2

**1 0507 - Swivel male stud UN/UNF - Female NPSM**



63 Parker Direct Link

Part number Steel	Thread	
	NPSM	UN/UNF-2A
0507-4-4	1/4-18	7/16-20
0507-6-4	1/4-18	9/16-18
0507-6-6	3/8-18	9/16-18
0507-6-8	1/2-14	9/16-18
0507-8-6	3/8-18	3/4-16
0507-8-8	1/2-14	3/4-16
0507-8-12	3/4-14	3/4-16
0507-10-8	1/2-14	7/8-14
0507-12-8	1/2-14	1 1/16-12
0507-12-12	3/4-14	1 1/16-12
0507-16-16	1-11 1/2	1 5/16-12
0507-20-20	1 1/4-11 1/2	1 5/8-12

**3507 - Swivel male 45° elbow UNF - Female NPSM**



63 Parker Direct Link

Part number Steel	Thread	
	NPSM	UN/UNF-2A
3507-4-4	1/4-18	7/16-20
3507-6-6	3/8-18	9/16-18
3507-8-6	3/8-18	3/4-16
3507-8-8	1/2-14	3/4-16
3507-8-12	3/4-14	3/4-16
3507-10-8	1/2-14	7/8-14
3507-12-12	3/4-14	1 1/16-12
3507-16-16	1-11 1/2	1 5/16-12

**2507 - Swivel male elbow UNF - Female NPSM**



63 Parker Direct Link

Part number Steel	Thread	
	NPSM	UN/UNF-2A
2507-4-4	1/4-18	7/16-20
2507-6-4	1/4-18	9/16-18
2507-6-6	3/8-18	9/16-18
2507-8-6	3/8-18	3/4-16
2507-8-8	1/2-14	3/4-16
2507-8-12	3/4-14	3/4-16
2507-10-6	3/8-18	7/8-14
2507-10-8	1/2-14	7/8-14
2507-10-12	3/4-14	7/8-14
2507-12-8	1/2-14	1 1/16-12
2507-12-12	3/4-14	1 1/16-12
2507-16-16	1-11 1/2	1 5/16-12
2507-20-20	1 1/4-11 1/2	1 5/8-12

**F3T4 - Male stud connector BSPT - JIS BSPP 60° cone**



63 Parker Direct Link

Part number	Thread	
	BSPP	BSPT
4F3T4S	1/4	1/4
4-6F3T4S	1/4	3/8
6-4F3T4S	3/8	1/4
6F3T4S	3/8	3/8
8-6F3T4S	1/2	3/8
8F3T4S	1/2	1/2
12F3T4S	3/4	3/4
16F3T4S	1	1

**C3T4 - Male elbow BSPT - JIS BSPP 60° cone**



63 Parker Direct Link

Part number	Thread	
	BSPP	BSPT
4C3T4S	1/4	1/4
6C3T4S	3/8	3/8
8C3T4S	1/2	1/2
12C3T4S	3/4	3/4
16C3T4S	1	1

**HMP4 - Union JIS BSPP 60° cone**



63 Parker Direct Link

Part number	Thread
	BSPP
4HP4S	1/4
6HP4S	3/8
8HP4S	1/2
12HP4S	3/4
16HP4S	1

**V3T4 - Male 45° elbow BSPT - JIS BSPP 60° cone**



63 Parker Direct Link

Part number	Thread	
	BSPP	BSPT
4V3T4S	1/4	1/4
6V3T4S	3/8	3/8
8V3T4S	1/2	1/2
12V3T4S	3/4	3/4
16V3T4S	1	1



**1** HP46 - Swivel female union - JIS BSPP 60° cone



63 Parker DirectLink

Part number	Thread	
	BSPP	BSPT
4HP46S	1/4	
6HP46S	3/8	
8HP46S	1/2	
12HP46S	3/4	

**F3P4 - Male stud connector BSPT - JIS BSPP 60° cone**



63 Parker DirectLink

Part number	Thread	
	BSPP	BSPT
4F3P4S	1/4	1/4
6F3P4S	3/8	3/8
8F3P4S	1/2	1/2
12F3P4S	3/4	3/4
16F3P4S	1	1

**C3P4 - Male 90° elbow BSPT - JIS BSPP 60° cone**



63 Parker DirectLink

Part number	Thread	
	BSPP	BSPT
4C3P4S	1/4	1/4
6C3P4S	3/8	3/8
8C3P4S	1/2	1/2
12C3P4S	3/4	3/4
16C3P4S	1	1

**V3P4 - Male 45° elbow BSPT - JIS BSPP 60° cone**



63 Parker DirectLink

Part number	Thread	
	BSPP	BSPT
4V3P4S	1/4	1/4
6V3P4S	3/8	3/8
8V3P4S	1/2	1/2
12V3P4S	3/4	3/4

HYDRAULICS

**F63P4 - Swivel male stud - JIS BSPP 60° cone swivel female end (JIS B8363) - Male BSPT (ISO 7)**



63 Parker Direct Link

Part number	Thread	
	BSPP	BSPT
4F63P4S	1/4	1/4
6F63P4S	3/8	3/8
8F63P4S	1/2	1/2
12F63P4S	3/4	3/4

**G63P4 - Female swivel connector BSPT - JIS BSPP 60° cone**



63 Parker Direct Link

Part number	Thread	
	BSPP	BSPT
4G63P4S	1/4	1/4
6G63P4S	3/8	3/8
8G63P4S	1/2	1/2
12G63P4S	3/4	3/4
16G63P4S	1	1

**G3P4 - Female stud connector - BSPT - JIS BSPP 60° cone**



63 Parker Direct Link

Part number	Thread	
	BSPP	BSPT
4G3P4S	1/4	1/4
6G3P4S	3/8	3/8
8G3P4S	1/2	1/2
12G3P4S	3/4	3/4
16G3P4S	1	1